

wall mounting socket outlet - with external fixing



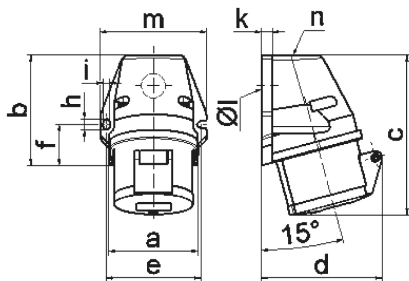
| Product description | |
|---------------------------|-----------------------------|
| BALS-Prd.-Nr | 100 |
| EAN | 4024941001007 |
| Product category | Wall mounting socket outlet |
| Current | 16A |
| Number of poles | 5p |
| Arrangement of phases | 3p+N+PE |
| Position of earth contact | 6 h |
| Voltage | 200/346 - 240/415V~ |
| Frequency | 50/60Hz |

| Product description | |
|------------------------|--|
| Protection degree | IP44 |
| Colour code | red RAL 3000 |
| Colour of appliance | Hinged lid red RAL 3000, Collar red RAL 3000, Housing top red RAL 3000, Housing bottom grey RAL 7035 |
| Connection design | with screw terminal |
| Maximum conductor size | 4,0 qmm |
| Cable entry | top entry M25 |
| Height | 131mm |
| Width | 87mm |
| Depth | 98mm |
| Dimension of enclosure | 90x87 mm (HxW) |
| Material of enclosure | Polyamide |
| Contacts | The contacts are brass, The contact carrier is made of polyamide |

| Additional technical properties | |
|---------------------------------|---|
| | The cable entry is one at top open and one at bottom closed |

| Logistics data | |
|----------------|-----------------|
| Weight/pcs | 0.22 kg / Piece |
| Packaging | Carton |
| Content amount | 10 ST |

| Logistics data | |
|----------------|---------------|
| EAN | 4024941827867 |
| Length | 387 mm |
| Width | 222 mm |
| Height | 150 mm |
| Weight | 2.393 kg |
| Volume | 11,029.5 ccm |



1 MB 19

| Ampere Polzahl | 16 3 | 16 4 | 16 5 | 32 3 | 32 4 | 32 5 |
|----------------------------|---------|---------|---------|---------|---------|---------|
| a | 59,5 | 72,4 | 72,4 | 79,1 | 79,1 | 79,1 |
| b | 90,0 | 90,0 | 90,0 | 92,0 | 92,0 | 92,0 |
| c | 130,0 | 130,0 | 131,0 | 142,0 | 142,0 | 142,0 |
| d | 85,0 | 96,0 | 98,0 | 103,0 | 103,0 | 106,0 |
| e | 62,0 | 77,0 | 77,0 | 84,0 | 84,0 | 84,0 |
| f | 33,5 | 33,5 | 33,5 | 30,0 | 30,0 | 30,0 |
| h | 9,0 | 9,0 | 9,0 | 9,0 | 9,0 | 9,0 |
| i | 5,5 | 5,5 | 5,5 | 5,5 | 5,5 | 5,5 |
| k | 8,0 | 9,0 | 9,0 | 9,0 | 9,0 | 9,0 |
| l ø | 21,0 | 21,0 | 21,0 | 21,0 | 21,0 | 21,0 |
| m | 72,0 | 87,0 | 87,0 | 94,0 | 94,0 | 94,0 |
| n | M20 | M25 | M25 | M25 | M25 | M25 |
| Leiter mm ² min | 1,5 | 1,5 | 1,5 | 2,5 | 2,5 | 2,5 |
| Leiter mm ² max | 4 | 4 | 4 | 10 | 10 | 10 |