

9002/11-120-024-001 Art. No. 158943



- For the intrinsically safe operation of a wide range of devices, such as HART transmitters, solenoid valves, sensors, zero-potential contacts and many more
- Compact, space-saving devices that are easy to install on a DIN rail
- Quick and efficient installation as barriers can be simultaneously snapped onto DIN rail and connected to ground (ISA - RP112.06)

WebCode **9002A**



The 9002 series INTRINSPAK two-channel zener barriers enable the intrinsically safe operation of virtually all field devices. The comprehensive portfolio and the combination of zener barriers cover a wide variety of signals. The devices are incredibly robust and require very little space. The back-up fuse is a convenient feature as it is standardized for all variants.

### Technical Data

Explosion Protection	
Application range (zones)	2
Ex interface zone	0 1 2 20 21 22
IECEX gas certificate	IECEX PTB 08.0057X
IECEX gas explosion protection	Ex nA [ia Ga] IIC/IIB T4 Gc
IECEX dust certificate	IECEX PTB 08.0057X
IECEX dust explosion protection	[Ex ia Da] IIIC
ATEX gas certificate	PTB 01 ATEX 2053 X
ATEX gas explosion protection	⊕ II 3 (1) G Ex nA [ia Ga] IIC/IIB T4 Gc
ATEX dust certificate	PTB 01 ATEX 2053 X
ATEX dust explosion protection	⊕ II (1) D [Ex ia Da] IIIC
Certificate FMus	3010778
Marking FMus	NONINCENDIVE FOR, Class I, Div. 2, Groups A,B,C,D; T4, Class I, Zone 2, Group IIC T4 IS connections for Class I,II,III, Div. 1, Groups A,B,C,D,E,F,G; Class I, Zone 0, Groups IIC/IIB Hazardous location when inst. per doc. 90 026 11 31 1
Certificate ULus	E81680V1S3
Marking ULus	For use in Hazardous location, Class I, Div. 2, Groups A,B,C,D; T4 Providing IS circuits for Class I,II,III, GROUPS A,B,C,D,E,F,G; per doc. 90 026 11 31 3
Certificate cCSA	1284580

9002/11-120-024-001 Art. No. 158943

### Explosion Protection

Marking cCSA	Associated equipment [Ex ia], Class I, Div. 2, Groups A,B,C,D; Provides IS circuits for Class I,II,III, Class I, Zone 0, Groups IIC/IIB For applicable grps per inst. doc. 90 016 11 31 2
EAC certificate	TS RU C-DE.ГБ04.B.00651
EAC gas explosion protection	Ex 2 Ex nA [ia Ga] IIC T4 Gc X
EAC dust explosion protection	Ex [Ex ia Da] IIC
Inmetro gas certificate	UL-BR 12.0354
Inmetro dust certificate	UL-BR 12.0354
Certificates	ATEX (PTB), Brazil (ULB), Canada (CSA), China (CQST), EAC (STV), IECEx (PTB), India (PESO), Japan (CML), Korea (KGS), USA (FM), USA (UL)
Installation	in Zone 2, Division 2 and in safe area
Further information	see respective certificate and operating instructions

### Safety Data

Maximum voltage $U_o$	12 V
Maximum current $I_o$	12 mA
Maximum power $P_o$	40 mW
Max. permissible external capacitance $C_o$ for IIC	1.41 $\mu$ F
Max. permissible external capacitance $C_o$ for IIB	9 $\mu$ F
Max. permissible external inductance $L_o$ for IIC	240 mH
Max. permissible external inductance $L_o$ for IIB	850 mH

### Electrical Data

Number of channels	2
Rated operational voltage DC	9 V
Maximum resistance $R_{max}$	1165 $\Omega$
Minimum resistance $R_{min}$	1052 $\Omega$
Maximum output current $I_{max}$	7,7 mA
Potential	Positive potential
Potential Ch 1	Positive potential
Potential Ch 2	Positive potential
Ohmic current limiting using frequency $\geq$ 50 mA	$\leq$ 100 kHz
Ohmic current limiting using frequency $\leq$ 50 mA	$\leq$ 50 kHz
Leakage current $I_{leak}$ for $U_N$	$\leq$ 2 $\mu$ A
Leakage current $I_{leak}$ for $U_N$ 2	(Unless specified otherwise)

Channel	Nominal voltage $U_N$	Minimum resistance $R_{min}$	Maximum resistance $R_{max}$	Maximum voltage $U_o$	Maximum current $I_o$	Maximum power $P_o$
1	9.00 V	1052.00 $\Omega$	1165.00 $\Omega$	12.00 V	12.0 mA	40.000 mW
2	25.00 V	1052.00 $\Omega$	1165.00 $\Omega$	12.00 V	12.0 mA	40.000 mW
1 + 2				12.00 V	24.0 mA	70.000 mW

### Auxiliary Power

Nominal voltage	9 V
-----------------	-----

9002/11-120-024-001 Art. No. 158943

### Auxiliary Power

Power supply	Controlled, nominal voltage
--------------	-----------------------------

### Ambient Conditions

Ambient temperature	-20 °C ... +60 °C
Ambient temperature	-4°F ... +140°F
Storage temperature	-20 °C ... +75 °C
Storage temperature	-4°F ... +167°F
Relative humidity max.	95% on average, no condensation
Temperature influence	≤ 0,25 %/10K

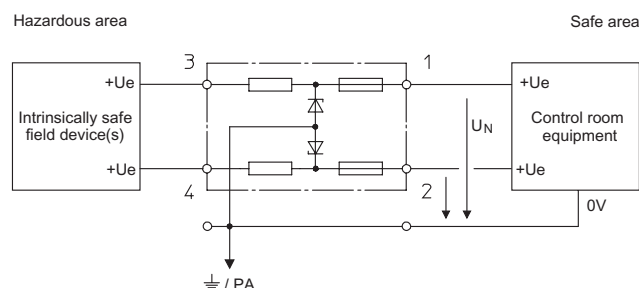
### Mechanical Data

Degree of protection (IP)	IP40
Terminal degree of protection (IP)	IP20
Enclosure material	Polyamide 6GF
Number of connection terminals	4
Connection cross section max.	1.5 mm <sup>2</sup>
Connection cross-section AWG	... 16 AWG
Type of connection cable	Solid Finely stranded
Width	103 mm
Width inches	4.09 in
Length	12 mm
Length inches	0.48 in
Mounting depth	72 mm
Mounting depth inches	2.76 in
Weight	0.11 kg
Weight	0.24 lb

### Mounting / Installation

Connection cross-section ground	4 mm <sup>2</sup>
Cross-section ground AWG	12 AWG
Connection type	2 PA
Min. torque Nm	0.5 Nm
Min. torque lb / in	4.43 lb / in
Max. torque Nm	0.6 Nm
Max. torque lb / in	5.31 lb / in

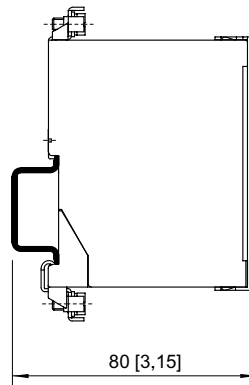
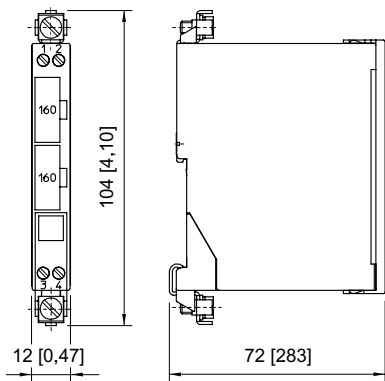
### Technical Drawings – Subject to Alterations



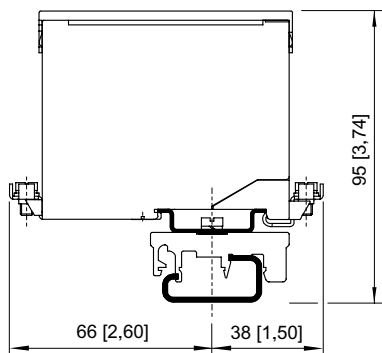
Two-channel safety barriers, potential: + / +

9002/11-120-024-001 Art. No. 158943

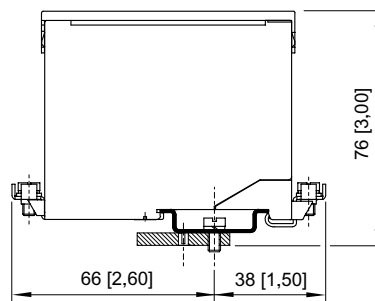
**Dimensional Drawings (All Dimensions in mm [inches]) – Subject to Alterations**



Mounting on DIN rail NS 35/15



Mounting on DIN rail NS 32 by means of adaptor and mounting attachment, moulded plastic



Mounting on mounting plate by means of adaptor

## Accessories and Spare Parts

### Back-up fuse

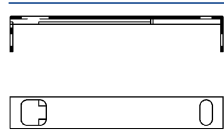


For all safety barriers Series 9001, 9002 and 9004  
Packaging unit: 5 pcs.

**Art. No.**

158964

### Holder for label

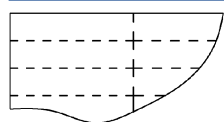


Transparent cover for labelling

**Art. No.**

158977

### Labelling paper

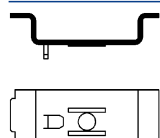


Perforated, for typing  
Format: DIN A4  
Packaging unit: 80 pieces

**Art. No.**

158973

### Adaptor



Adaptor allows installation of a safety barrier Series 900x on a mounting plate of a previous series.

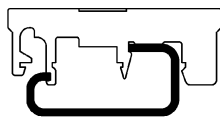
**Art. No.**

158826

9002/11-120-024-001 Art. No. 158943

### Mounting attachment moulded plastic

Art. No.

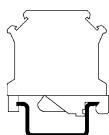


Enables mounting of safety barrier on a G-rail.

165283

### Protective conductor terminal

Art. No.

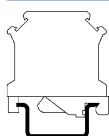


USLKG 5 (wire range 4 mm<sup>2</sup>)  
Terminal enables connection of protective conductors to DIN rail. Colour green-yellow.

112760

### Earth terminal

Art. No.

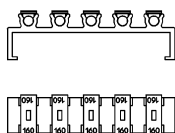


USLKG 6 N (wire range 6 mm<sup>2</sup>)  
Terminal enables connection of protective / earthing conductors to DIN rail. Colour green-yellow.

112599

### Fuse holder

Art. No.

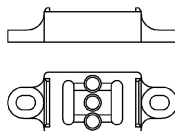


Fuse holder is snapped onto the side of the safety barrier and can be equipped with up to 5 back-up fuses (replacement).

158834

### Insulating stand off

Art. No.



Suitable for DIN rail NS35/15, allows electrically insulated mounting of DIN rail from mounting plate.

158828

We reserve the right to make alterations to the technical data, dimensions, weights, designs and products available without notice. The illustrations cannot be considered binding.