

8118/113-303 Art. No. 133078



- Resistant Ex e enclosure, universally usable as connection or junction boxes and/or to safeguard electric distributors up to 6.3 A
- Degree of protection IP66
- With mantle terminals or with a combination of mantle terminals and miniature fuses (optional)

WebCode 8118A



R. STAHL Series 8118 Ex e junction boxes are equipped with 4, 5 or 8 mantle terminals depending on their design size. As an option, miniature fuses can still be installed in addition. Junction boxes are also suitable for safeguarding. The robust enclosure made from glass fibre-reinforced polyester resin can be equipped with plastic or metal cable glands.

Technical Data

Explosion Protection

Scope of validity	IECEX
Application range (zones)	1 2 21 22
IECEX gas certificate	IECEX PTB 06.0026
IECEX gas explosion protection	Ex e mb IIC T6/T4 Gb
IECEX dust certificate	IECEX PTB 06.0026
IECEX dust explosion protection	Ex tb IIIC T80 °C ... T130 °C Db
ATEX gas certificate	PTB 99 ATEX 3103
ATEX gas explosion protection	⊕ II 2 G Ex e mb IIC T6/T4 Gb
ATEX dust certificate	PTB 99 ATEX 3103
ATEX dust explosion protection	⊕ II 2 D Ex tb IIIC T80 °C ... T130 °C Db
EAC certificate	TS RU S-DE.AA71.B.00120
EAC gas explosion protection	⊠ 1 Ex e d ia mb IIC T6...T3 Gb X
EAC dust explosion protection	⊠ Ex tb IIIC T80° ... T135°C DbX
Certificates	ATEX (PTB), Brazil (ULB), China (NEPSI), EAC (LPE), IECEX (PTB)
Ship approval	BVIS

Electrical Data

Rated operational voltage AC	250 V / 500 V
------------------------------	------------------

Ambient Conditions

Ambient temperature	-40 °C ... +40 °C (T6) -40 °C ... +55 °C (T4)
---------------------	--

Mechanical Data

Degree of protection (IP)	IP66
Enclosure material	Polyester resin, Glass fibre reinforced

8118/113-303 Art. No. 133078

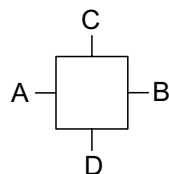
Mechanical Data

Connection cross-section	2.5 mm ²
Width	85 mm
Height	85 mm
Depth	55 mm
Weight	0.33 kg
Weight	0.73 lb

Components

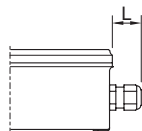
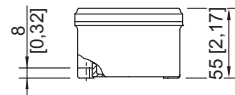
Entry 1	2 x Black cable entry M20 Ø 6 ... 13 mm
Entry 2	2 x Stopping plug M20 x 1,5
Type of terminals 1	3 x Sheath terminal 4 mm ²

Technical Drawings – Subject to Alterations



"." = marking installation possibilities

Dimensional Drawings (All Dimensions in mm [inches]) – Subject to Alterations



Length L

protrusion length for cable glands, Series 8161

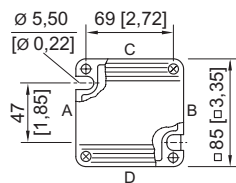
in case of M20: 25 ... 31 [0.98 ... 1.22]

in case of M25: 27 ... 33 [1.06 ... 1.3]

in case of M32: 32 ... 39 [1.26 ... 1.54]

protrusion length for cable glands with strain relief, Series HSK-K-MZ

in case of M25: 41 [1,61]



8118/1.1.
enclosure size 1

Accessories

Brass plate with thread

	Art. No.
	168913
	168914

Installation Equipment

Junction box With fuses



8118/113-303 Art. No. 133078

We reserve the right to make alterations to the technical data, dimensions, weights, designs and products available without notice. The illustrations cannot be considered binding.