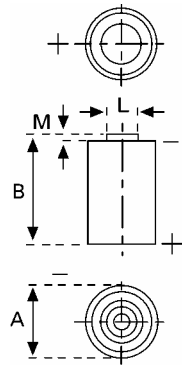


Data Sheet



Type Number 6117
Designation IEC ---
System Li-Manganese dioxide / Organic Electrolyte

UL Recognition:..... MH 13654 (N)
Nominal Voltage 3 V
Typical Capacity C 2000 mAh
 Load 1.0 kOhm, at 20°C down to 2 V

Weight (approx.) 21,5 g
Volume 8,5 ccm
Coding..... Date of Manufacturing Quarter/Year

Temperature Ranges

	min	max.
Storage	-55°C	75 °C
Discharge	-30°C	75°C

Dimensions

	min	max.
Diameter (A)	14,45	14,75
Height (B)	49,5	50,5
Shoulder Diameter[L]	7	
Shoulder Height [M]	0,6	

Segment Electronic

Main Applications Electronic

Typical Capacities (at 20°C)

Discharge Type	Load	End Voltage:	2.0 V
Continuous 24h/d,7d/w	1000 Ω	Time: Capacity [mAh]: Energy [mWh]:	745 h 2000 5600
Discharge Type	Load	End Voltage:	2.0 V
Continuous 24h/d,7d/w	620 Ω	Time: Capacity [mAh]: Energy [mWh]:	430 h 1850 5000

All Data contained herein is for single cells
 For battery applications, performance data may vary from single cell data, depending on specific battery configuration