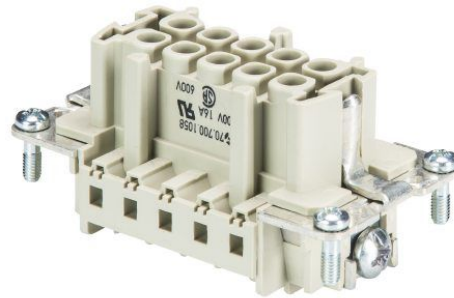


Datablad

Art. Nr. 70.700.1058.0

BAS BUC 10 50

Revos Basic Indsats hun crimp 10-pol 500V/16A Indsats



| | |
|-------------|---------------|
| Art. Nr. | 70.700.1058.0 |
| EAN | 4015573223646 |
| Ordre enhed | 10 styk |

Godkendelser

Specifikationer
Generelt

| | |
|-----------------------------------------------------------|--------|
| Model | |
| Brandbarheds klasse af isoleringsmateriale iht. med UL 94 | V0 |
| Farve | grå |
| Stikcykler | 200 |
| Forureningsgrad | 3 |
| Modular version | nej |
| Min. Driftstemperaturområde | -40 °C |
| Maks. Driftstemperaturområde | 120 °C |

Tilslutningsdata

| | |
|-------------------------------------------|-------|
| Tilslutning | Crimp |
| Antal poler | 10 |
| Ekskl. skifte kontakter | 0 |
| Antal poler nominel strøm 2 | 0 |
| Antal poler nominel strøm 3 | 0 |
| Totalt antal af poler (uden jord kontakt) | 10 |
| Med lederbeskyttelse | nej |
| Beskyttelseskontakt | ja |

Specifikationer UL/CSA

| | |
|---------------------------------------|---------------------|
| Nominel spænding i henhold til UL/CSA | 600 V |
| Nominel strøm i henhold til UL | 16 A |
| Nominel strøm i henhold til CSA | 16 A |
| Min. kvadrat flerkoret leder | 0,5 mm ² |
| Maks. kvadrat flerkoret leder | 4 mm ² |
| Kvadrat fleksibel AWG wire | 20-12 AWG |

Model

| | |
|----------|-----|
| med huse | nej |
|----------|-----|

Kontakter

| | |
|--------------------|--------------|
| Kontakt material | Se kontakter |
| overflade | Se kontakter |
| overgangsmodstand | # 1,5 mOhm |
| Afisoleringslængde | 7 mm |

Skruhoved design / anbefalet tilspændingsmoment

| | |
|------------------|---------------|
| Monteringsskruer | H1/0,5-0,7 Nm |
| Jordleder skruer | H2/1,2-1,6 Nm |

Specifikationer DIN EN 61984

| | |
|-------------------------|-------|
| Nominel spænding | 500 V |
| Nominel spænding til PE | 500 V |
| Nominel strøm | 16 A |
| Nominel impuls spænding | 6 kV |

Tilbehør

| Art. Nr. | Type | Beskrivelse |
|---------------|------------------------------|----------------------------------------------------------------------------|
| 02.123.7001.0 | Hun kontakt 0,5 QMM AU | Revos Basic + MOT + Mini Crimp kontakt hun 0,5mm ² forgyldt |
| 02.123.7002.0 | Hun kontakt 0,5 QMM Ag | Revos Basic + MOT + Mini Crimp kontakt hun 0,5mm ² forselvet |
| 02.123.7021.0 | Hun kontakt 0,5 QMM | Revos Basic + MOT + Mini Crimp kontakt hun 0,5mm ² fortinnet |
| 02.123.7101.0 | Hun kontakt 0,75-1 QMM AU | Revos Basic + MOT + Mini Crimp kontakt hun 0,75-1mm ² forgyldt |
| 02.123.7102.0 | Hun kontakt 0,75-1 QMM AG | Revos Basic + MOT + Mini Crimp kontakt hun 0,75-1mm ² forselvet |
| 02.123.7121.0 | Hun kontakt 0,75-1 QMM | Revos Basic + MOT + Mini Crimp kontakt hun 0,75-1mm ² fortinnet |
| 02.123.7201.0 | Hun kontakt 1,5 QMM AU | Revos Basic + MOT + Mini Crimp kontakt hun 1,5mm ² forgyldt |
| 02.123.7202.0 | hun crimp indsats 1,5 QMM AG | Revos Basic + MOT + Mini Crimp kontakt hun 1,5mm ² forselvet |
| 02.123.7221.0 | Hun kontakt 1,5 QMM | Revos Basic + MOT + Mini Crimp kontakt hun 1,5mm ² fortinnet |
| 02.123.7301.0 | Hun kontakt 2,5 QMM AU | Revos Basic + MOT + Mini Crimp kontakt hun 2,5mm ² forgyldt |
| 02.123.7302.0 | hun crimp indsats 2,5 QMM AG | Revos Basic + MOT + Mini Crimp kontakt hun 2,5mm ² forselvet |
| 02.123.7321.0 | Hun kontakt 2,5 QMM | Revos Basic + MOT + Mini Crimp kontakt hun 2,5mm ² fortinnet |
| 02.123.7401.0 | Hun kontakt 4 QMM AU | Revos Basic + MOT + Mini Crimp kontakt hun 4mm ² forgyldt |
| 02.123.7402.0 | hun crimp indsats 4 QMM AG | Revos Basic + MOT + Mini Crimp kontakt hun 4mm ² forselvet |
| 02.123.7421.0 | Hun kontakt 4 QMM | Revos Basic + MOT + Mini Crimp kontakt hun 4mm ² fortinnet |

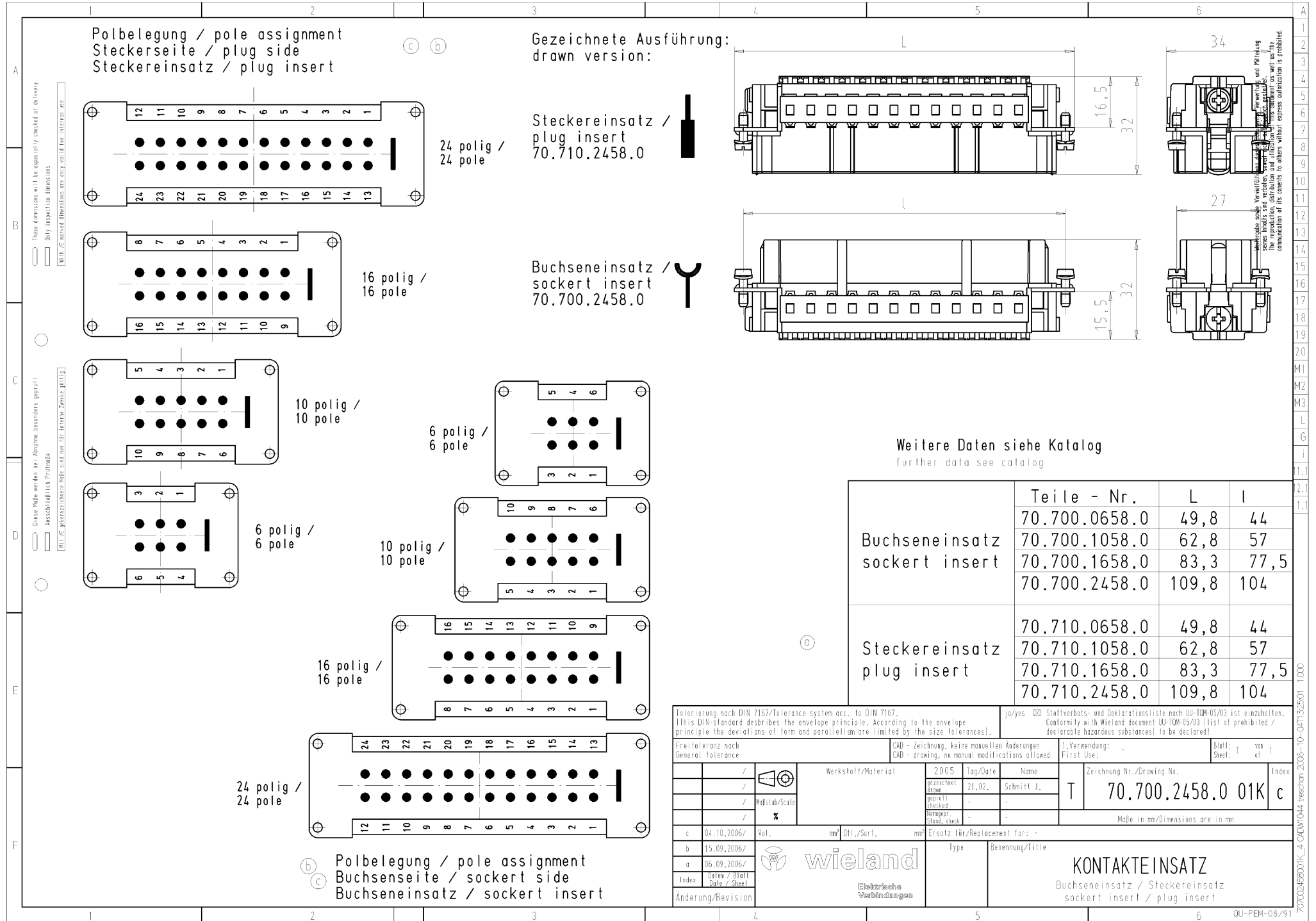
montage

| Art. Nr. | Type | Beskrivelse |
|---------------|----------------------------------------|--------------------------------------------------------------------------------------------------|
| 70.950.1053.3 | Klemmeadapter sæt BAS GAZSHLS10 4,0 50 | Revos Basic Klemmeadapter han m. chasisarm jord højre skrue 10-pol 500V/16A 2,5mm ² |
| 70.950.1053.4 | Klemmeadapter sæt BAS GAZSNLS10 4,0 50 | Revos Basic Klemmeadapter han m. chasisarm jord højre skrue 10-pol 500V/16A 2,5mm ² |
| 70.955.1053.3 | Klemmeadapter sæt BAS GAZSHRS10 4,0 50 | Revos Basic Klemmeadapter han m. chasisarm jord venstre skrue 10-pol 500V/16A 2,5mm ² |
| 70.955.1053.4 | Klemmeadapter sæt BAS GAZSNRS10 4,0 50 | Revos Basic Klemmeadapter han m. chasisarm jord venstre skrue 10-pol 500V/16A 2,5mm ² |
| 70.710.1058.0 | Han indsats BAS STC 10 50 | Revos Basic Indsats han crimp 10-pol 500V/16A Indsats |
| 71.350.1035.0 | Hus BAS GOT GG 10 M20 A0 | Revos Basic stik M20 Size: 10 incl. forskrning |
| 71.350.1035.1 | Hus BAS GOT GG 10 M20 A1 | Revos Basic stik M20 Size: 10 excl. forskrning |
| 71.350.1035.2 | Hus BAS GOT GG 10 M20 A2 | Revos Basic stik M20 Size: 10 m. studs |
| 71.350.1035.3 | Hus BAS GOT GG 10 M20 A3 | Revos Basic stik M20 Size: 10 incl. trompet forskr. |
| 71.352.1035.0 | Hus BAS GOT GI 10 M20 A0 | Revos Basic stik M20 Size: 10 incl. forskrning |
| 71.352.1035.1 | Hus BAS GOT GI 10 M20 A1 | Revos Basic stik M20 Size: 10 excl. forskrning |
| 71.352.1035.2 | Hus BAS GOT GI 10 M20 A2 | Revos Basic stik M20 Size: 10 m. studs |
| 71.352.1035.3 | Hus BAS GOT GI 10 M20 A3 | Revos Basic stik M20 Size: 10 incl. trompet forskr. |
| 71.353.1035.0 | Hus BAS GOT GG 10 M25 A0 | Revos Basic stik M25 Size: 10 incl. forskrning |
| 71.353.1035.1 | Hus BAS GOT GG 10 M25 A1 | Revos Basic stik M25 Size: 10 excl. forskrning |
| 71.353.1035.2 | Hus BAS GOT GG 10 M25 A2 | Revos Basic stik M25 Size: 10 m. studs |
| 71.353.1035.3 | Hus BAS GOT GG 10 M25 A3 | Revos Basic stik M25 Size: 10 incl. trompet forskr. |
| 71.354.1035.0 | Hus BAS GOT GI 10 M25 A1 | Revos Basic stik M25 Size: 10 incl. forskrning |
| 71.354.1035.1 | Hus BAS GOT GI 10 M25 A2 | Revos Basic stik M25 Size: 10 excl. forskrning |
| 71.354.1035.2 | Hus BAS GOT GI 10 M25 A3 | Revos Basic stik M25 Size: 10 m. studs |

| | | |
|---------------|------------------------------|-------------------------------------------------------------------------------|
| 71.354.1035.3 | Hus BAS GOT GI 10 M25 A5 | Revos Basic stik M25 Size: 10 incl. trompet forskr. |
| 71.372.1035.0 | Hus BAS GOT GL 10 M20 A0 | Revos Basic Stik til stik hus med pakning M20 Size: 10 incl. forskruning |
| 71.372.1035.1 | Hus BAS GOT GL 10 M20 A1 | Revos Basic Stik til stik hus med pakning M20 Size: 10 excl. forskruning |
| 71.372.1035.3 | Hus BAS GOT GL 10 M20 A3 | Revos Basic Stik til stik hus med pakning M20 Size: 10 incl. trompet for skr. |
| 71.450.1037.1 | Hus BAS GOM GG10 M20 B1 | |
| 71.452.1037.1 | Hus BAS GOM GI10 M20 B1 | |
| 71.472.1037.1 | Hus BAS GOM GL10 M20 B1 | |
| 76.350.1035.0 | Hus BAS GOT GG 10HM25 50 A0 | Revos Basic stik M25 Size: 10 incl. forskruning |
| 76.350.1035.1 | Hus BAS GOT GG 10HM25 50 A1 | Revos Basic stik M25 Size: 10 excl. forskruning |
| 76.351.1035.0 | Hus BAS GOT GH 10H M20 A0 | Revos Basic stik M20 incl. forskruning |
| 76.351.1035.1 | Hus BAS GOT GH 10H M20 A1 | Revos Basic stik M20 excl. forskruning |
| 76.351.1035.2 | Hus BAS GOT GH 10H M20 A2 | |
| 76.351.1035.3 | Hus BAS GOT GH 10H M20 A3 | |
| 76.352.1035.0 | Hus BAS GOT GI 10HM25 50 A0 | Revos Basic stik M25 Size: 10 incl. forskruning |
| 76.352.1035.1 | Hus BAS GOT GI 10HM25 50 A1 | Revos Basic stik M25 Size: 10 excl. forskruning |
| 76.353.1035.0 | Hus BAS GOT GG 10HM32 50 A0 | Revos Basic stik M32 Size: 10 incl. forskruning |
| 76.353.1035.1 | Hus BAS GOT GG 10HM32 50 A1 | Revos Basic stik M32 Size: 10 excl. forskruning |
| 76.353.1035.2 | Hus BAS GOT GG 10HM32 50 A2 | Revos Basic stik M20 Size: 10 m. studs |
| 76.354.1035.0 | Hus BAS GOT GI 10HM32 50 A0 | Revos Basic stik M32 Size: 10 incl. forskruning |
| 76.354.1035.1 | Hus BAS GOT GI 10HM32 50 A1 | Revos Basic stik M32 Size: 10 excl. forskruning |
| 76.354.1035.2 | Hus BAS GOT GI 10HM32 50 A2 | Revos Basic stik M32 Size: 10 m. studs |
| 71.320.1028.0 | Bund BAS GUT GK 10 A | Revos Basic chassisararmatur Size: 10 |
| 71.325.1028.0 | Bund BAS GUT GP 10 A | Revos Basic chassisararmatur m. låg Size: 10 |
| 71.330.1035.0 | Bund BAS GUT GL 10 M20 A0 | Revos Basic Grundarmatur 2xM20 Size: 10 incl. forskruning |
| 71.330.1035.1 | Bund BAS GUT GL 10 M20 A1 | Revos Basic Grundarmatur 2xM20 Size: 10 excl. forskruning |
| 71.331.1035.0 | Bund BAS GUT GM 10 M20 A0 | Revos Basic Grundarmatur M20 Size: 10 incl. forskruning |
| 71.331.1035.1 | Bund BAS GUT GM 10 M20 A1 | Revos Basic Grundarmatur M20 Size: 10 excl. forskruning |
| 71.333.1035.0 | Bund BAS GUT GO 10 M20 A0 | Revos Basic Grundarmatur M20 bund Size: 10 incl. forskruning |
| 71.333.1035.1 | Bund BAS GUT GO 10 M20 A1 | Revos Basic Grundarmatur M20 bund Size: 10 excl. forskruning |
| 71.335.1035.0 | Bund BAS GUT GM 10 M25 A0 | Revos Basic Grundarmatur M25 Size: 10 incl. forskruning |
| 71.335.1035.1 | Bund BAS GUT GM 10 M25 A1 | Revos Basic Grundarmatur M25 excl. forskruning |
| 71.340.1035.0 | Bund BAS GUT GR 10 M20 A0 | Revos Basic Grundarmatur 2xM20 Size: 10 incl. forskruning |
| 71.340.1035.1 | Bund BAS GUT GR 10 M20 A1 | Revos Basic Grundarmatur 2xM20 Size: 10 excl. forskruning |
| 71.341.1035.0 | Bund BAS GUT GS 10 M20 A0 | Revos Basic Grundarmatur Mit Deckel M20 Size: 10 incl. forskruning |
| 71.341.1035.1 | Bund BAS GUT GS 10 M20 A1 | Revos Basic Grundarmatur Mit Deckel M20 Size: 10 excl. forskruning |
| 71.342.1035.0 | Bund BAS GUT GT 10 M20 A0 | Revos Basic Grundarmatur Mit Deckel M20 Size: 10 incl. forskruning |
| 71.342.1035.1 | Bund BAS GUT GT 10 M20 A1 | Revos Basic Grundarmatur Mit Deckel M20 Size: 10 excl. forskruning |
| 71.343.1035.0 | Bund BAS GUT GU 10 M20 A0 | Revos Basic Grundarmatur M20 bund Size: 10 incl. forskruning |
| 71.343.1035.1 | Bund BAS GUT GU 10 M20 A1 | Revos Basic Grundarmatur M20 bund Size: 10 excl. forskruning |
| 71.420.1037.0 | Bund BAS GUM GK 10 B | |
| 71.425.1037.0 | Bund BAS GUM GP 10 B | |
| 71.430.1037.1 | Bund BAS GUM GL 10 M20 B1 | |
| 71.431.1037.1 | Bund BAS GUM GM 10 M20 B1 | |
| 71.440.1037.1 | Bund BAS GUM GR 10 M20 B1 | |
| 71.441.1037.1 | Bund BAS GUM GS 10 M20 B1 | |
| 76.330.1035.0 | Bund BAS GUT GL 10HM25 50 A0 | Revos Basic Grundarmatur 2xM25 Size: 10H incl. forskruning |
| 76.330.1035.1 | Bund BAS GUT GL 10HM25 50 A1 | Revos Basic Grundarmatur 2xM25 Size: 10H excl. forskruning |
| 76.331.1035.0 | Bund BAS GUT GM 10HM25 50 A0 | Revos Basic Grundarmatur M25 Size: 10 incl. forskruning |
| 76.331.1035.1 | Bund BAS GUT GM 10HM25 50 A1 | Revos Basic Grundarmatur M25 Size: 10 excl. forskruning |
| 76.334.1035.0 | Bund BAS GUT GL 10HM32 50 A0 | Revos Basic Grundarmatur 2xM32 incl. forskruning |
| 76.334.1035.1 | Bund BAS GUT GL 10HM32 50 A1 | Revos Basic Grundarmatur 2xM32 Size: 10H excl. forskruning |
| 76.335.1035.0 | Bund BAS GUT GM 10HM32 50 A0 | Revos Basic Grundarmatur M32 Size: 10 incl. forskruning |
| 76.335.1035.1 | Bund BAS GUT GM 10HM32 50 A1 | Revos Basic Grundarmatur M32 excl. forskruning |
| 76.340.1035.0 | Bund BAS GUT GR 10HM25 50 A0 | Revos Basic Grundarmatur 2xM25 Size: 10 incl. forskruning |
| 76.340.1035.1 | Bund BAS GUT GR 10HM25 50 A1 | Revos Basic Grundarmatur 2xM25 Size: 10 excl. forskruning |
| 76.341.1035.0 | Bund BAS GUT GS 10HM25 50 A0 | Revos Basic Grundarmatur Mit Deckel M25 incl. forskruning |
| 76.341.1035.1 | Bund BAS GUT GS 10HM25 50 A1 | Revos Basic Grundarmatur Mit Deckel M25 Size: 10 excl. forskruning 500V |

| | | |
|---------------|------------------------------|---------------------------------------------------------------------------------------|
| 76.342.1035.0 | Bund BAS GUT GT 10HM25 50 A0 | Revos Basic Grundarmatur Mit Deckel M25 incl. forskrning |
| 76.342.1035.1 | Bund BAS GUT GM 10HM25 50 A1 | Revos Basic Grundarmatur Mit Deckel M25 Size: 10 excl. forskrning |
| 76.344.1035.0 | Bund BAS GUT GR 10HM32 50 A0 | Revos Basic Grundarmatur 2xM32 incl. forskrning |
| 76.344.1035.1 | Bund BAS GUT GR 10HM32 50 A1 | Revos Basic Grundarmatur 2xM32 excl. forskrning |
| 76.345.1035.0 | Bund BAS GUT GS 10HM32 50 A0 | Revos Basic Grundarmatur M32 Size: 10 incl. forskrning |
| 76.345.1035.1 | Bund BAS GUT GS 10HM32 50 A1 | Revos Basic Grundarmatur M32 excl. forskrning |
| 76.346.1035.0 | Bund BAS GUT GT 10HM32 50 A0 | Revos Basic Grundarmatur M32 Size: 10 incl. forskrning |
| 76.346.1035.1 | Bund BAS GUT GT 10HM32 50 A1 | Revos Basic Grundarmatur M32 excl. forskrning |
| 70.350.1035.0 | Hus BAS GOT GA 10 M20 A0 | Revos Basic stik vinklet M20 Size: 10 incl. forskrning |
| 70.350.1035.1 | Hus BAS GOT GA 10 M20 A1 | Revos Basic stik vinklet M20 Size: 10 excl. forskrning |
| 70.350.1035.2 | Hus BAS GOT GA 10 M20 A2 | Revos Basic stik vinklet M20 Size: 10 m. studs |
| 70.350.1035.3 | Hus BAS GOT GA 10 M20 A3 | Revos Basic stik vinklet M20 Size: 10 incl. trompet forskr. |
| 70.352.1035.0 | Hus BAS GOT GC 10 M20 A0 | Revos Basic stik lige M20 Size: 10 incl. forskrning |
| 70.352.1035.1 | Hus BAS GOT GC 10 M20 A1 | Revos Basic stik lige M20 Size: 10 excl. forskrning |
| 70.352.1035.2 | Hus BAS GOT GC 10 M20 A2 | Revos Basic stik lige M20 Size: 10 m. studs |
| 70.352.1035.3 | Hus BAS GOT GC 10 M20 A3 | Revos Basic stik lige M20 Size: 10 incl. trompet forskr. |
| 70.353.1035.0 | Hus BAS GOT GA 10 M25 A0 | Revos Basic stik vinklet M25 Size: 10 incl. forskrning |
| 70.353.1035.1 | Hus BAS GOT GA 10 M25 A1 | Revos Basic stik vinklet M25 Size: 10 excl. forskrning |
| 70.353.1035.2 | Hus BAS GOT GA 10 M25 A2 | Revos Basic stik vinklet M25 Size: 10 m. studs |
| 70.353.1035.3 | Hus BAS GOT GA 10 M25 A3 | Revos Basic stik vinklet M25 Size: 10 incl. trompet forskr. |
| 70.354.1035.0 | Hus BAS GOT GC 10 M25 A0 | Revos Basic stik lige M25 Size: 10 incl. forskrning |
| 70.354.1035.1 | Hus BAS GOT GC 10 M25 A1 | Revos Basic stik lige M25 Size: 10 excl. forskrning |
| 70.354.1035.2 | Hus BAS GOT GC 10 M25 A2 | Revos Basic stik lige M25 Size: 10 m. studs |
| 70.354.1035.3 | Hus BAS GOT GC 10 M25 A3 | Revos Basic stik lige M25 Size: 10 incl. trompet forskr. |
| 70.355.1035.0 | Hus BAS GOT GD 10 M20 A0 | Revos Basic stik vinklet M20 Size: 10 incl. forskrning |
| 70.355.1035.1 | Hus BAS GOT GD 10 M20 A1 | Revos Basic stik vinklet M20 Size: 10 excl. forskrning |
| 70.355.1035.2 | Hus BAS GOT GD 10 M20 A2 | Revos Basic stik vinklet M20 Size: 10 m. studs |
| 70.355.1035.3 | Hus BAS GOT GD 10 M20 A3 | Revos Basic stik vinklet M20 Size: 10 incl. trompet forskr. |
| 70.357.1035.0 | Hus BAS GOT GF 10 M20 A0 | Revos Basic stik lige M20 Size: 10 incl. forskrning |
| 70.357.1035.1 | Hus BAS GOT GF 10 M20 A1 | Revos Basic stik lige M20 Size: 10 excl. forskrning |
| 70.357.1035.2 | Hus BAS GOT GF 10 M20 A2 | Revos Basic stik lige M20 Size: 10 m. studs |
| 70.357.1035.3 | Hus BAS GOT GF 10 M20 A3 | Revos Basic stik lige M20 Size: 10 incl. trompet forskr. |
| 70.358.1035.0 | Hus BAS GOT GD 10 M25 A0 | Revos Basic stik vinklet M25 Size: 10 incl. forskrning |
| 70.358.1035.1 | Hus BAS GOT GD 10 M25 A1 | Revos Basic stik vinklet M25 Size: 10 excl. forskrning |
| 70.358.1035.2 | Hus BAS GOT GD 10 M25 A2 | Revos Basic stik vinklet M25 Size: 10 m. studs |
| 70.358.1035.3 | Hus BAS GOT GD 10 M25 A3 | Revos Basic stik vinklet M25 Size: 10 incl. trompet forskr. |
| 70.359.1035.0 | Hus BAS GOT GF 10 M25 A0 | Revos Basic stik lige M25 Size: 10 incl. forskrning |
| 70.359.1035.1 | Hus BAS GOT GF 10 M25 A1 | Revos Basic stik lige M25 Size: 10 excl. forskrning |
| 70.359.1035.2 | Hus BAS GOT GF 10 M25 A2 | Revos Basic stik lige M25 Size: 10 m. studs |
| 70.359.1035.3 | Hus BAS GOT GF 10 M25 A3 | Revos Basic stik lige M25 Size: 10 incl. trompet forskr. |
| 70.372.1035.0 | Hus BAS GOT GK 10 M20 A0 | Revos Basic Stik til stik hus med pakning m. pak. M20 Size: 10 incl. for skrning |
| 70.372.1035.1 | Hus BAS GOT GK 10 M20 A1 | Revos Basic Stik til stik hus med pakning m. pak. M20 Size: 10 excl. for skrning |
| 70.372.1035.3 | Hus BAS GOT GK 10 M20 A3 | Revos Basic Stik til stik hus med pakning m. pak. M20 Size: 10 incl. tro mpet forskr. |
| 73.350.1035.0 | Hus BAS GOT GA 10HM25 50 A0 | Revos Basic stik M25 Size: 10H incl. forskrning |
| 73.350.1035.1 | Hus BAS GOT GA 10HM25 50 A1 | Revos Basic stik M25 Size: 10H excl. forskrning |
| 73.350.1035.2 | Hus BAS GOT GA 10HM25 50 A2 | Revos Basic stik M25 Size: 10H m. studs |
| 73.350.1035.3 | Hus BAS GOT GA 10 M20 A3 | Revos Basic stik M20 incl. trompet forskr. |
| 73.351.1035.0 | Hus BAS GOT GB 10H M20 A0 | Revos Basic stik M20 incl. forskrning |
| 73.351.1035.1 | Hus BAS GOT GB 10H M20 A1 | Revos Basic stik M20 excl. forskrning |
| 73.351.1035.2 | Hus BAS GOT GB 10H M20 A2 | |
| 73.351.1035.3 | Hus BAS GOT GB 10H M20 A3 | |
| 73.352.1035.0 | Hus BAS GOT GC 10HM25 50 A0 | Revos Basic stik M25 Size: 10H incl. forskrning |
| 73.352.1035.1 | Hus BAS GOT GC 10HM25 50 A1 | Revos Basic stik M25 Size: 10H excl. forskrning |
| 73.352.1035.2 | Hus BAS GOT GC 10HM25 50 A2 | Revos Basic stik M25 Size: 10H m. studs |
| 73.352.1035.3 | Hus BAS GOT GC 10 M25 A3 | Revos Basic stik M20 Size: 10H incl. trompet forskr. |
| 73.353.1035.0 | Hus BAS GOT GA 10HM32 50 A0 | Revos Basic stik M32 Size: 10H incl. forskrning |
| 73.353.1035.1 | Hus BAS GOT GA 10HM32 50 A1 | Revos Basic stik M32 Size: 10H excl. forskrning |

| | | |
|---------------|------------------------------|-----------------------------------------------------------------------------|
| 73.353.1035.2 | Hus BAS GOT GA 10HM32 50 A2 | Revos Basic stik M32 m. studs |
| 73.353.1035.3 | Hus BAS GOT GA 10HM32 50 A3 | Revos Basic stik M32 Size: 10H incl. trompet forskr. |
| 73.354.1035.0 | Hus BAS GOT GC 10HM32 50 A0 | Revos Basic stik M32 Size: 10H incl. forskruning |
| 73.354.1035.1 | Hus BAS GOT GC 10HM32 50 A1 | Revos Basic stik M32 Size: 10H excl. forskruning |
| 73.354.1035.2 | Hus BAS GOT GC 10HM32 50 A2 | Revos Basic stik M32 m. studs |
| 73.354.1035.3 | Hus BAS GOT GC 10HM32 50 A3 | Revos Basic stik M32 Size: 10H incl. trompet forskr. |
| 70.320.1028.0 | Bund BAS GUT GA 10 A | Revos Basic chassisarmatur Size: 10 |
| 70.325.1028.0 | Bund BAS GUT GE 10 A | Revos Basic chassisarmatur m. låg Size: 10 |
| 70.330.1035.0 | Bund BAS GUT GB 10 M20 A0 | Revos Basic Grundarmatur 2xM20 Size: 10 incl. forskruning |
| 70.330.1035.1 | Bund BAS GUT GB 10 M20 A1 | Revos Basic Grundarmatur 2xM20 Size: 10 excl. forskruning |
| 70.331.1035.0 | Bund BAS GUT GC 10 M20 A0 | Revos Basic Grundarmatur M20 Size: 10 incl. forskruning |
| 70.331.1035.1 | Bund BAS GUT GC 10 M20 A1 | Revos Basic Grundarmatur M20 Size: 10 excl. forskruning |
| 70.333.1035.0 | Bund BAS GUT GD 10 M20 A0 | Revos Basic Grundarmatur M20 bund Size: 10 incl. forskruning |
| 70.333.1035.1 | Bund BAS GUT GD 10 M20 A1 | Revos Basic Grundarmatur M20 bund Size: 10 excl. forskruning |
| 70.334.1035.0 | Bund BAS GUT GB 10 M25 A0 | Revos Basic Grundarmatur 2xM25 Size: 10 incl. forskruning |
| 70.334.1035.1 | Bund BAS GUT GB 10 M25 A1 | Revos Basic Grundarmatur 2xM25 Size: 10 excl. forskruning |
| 70.335.1035.0 | Bund BAS GUT GC 10 M25 50 A0 | Revos Basic Grundarmatur M25 Size: 10 incl. forskruning |
| 70.335.1035.1 | Bund BAS GUT GC 10 M25 A1 | Revos Basic Grundarmatur M25 Size: 10 excl. forskruning |
| 70.337.1035.1 | Bund BAS GUT GD 10 M25 A1 | |
| 70.340.1035.0 | Bund BAS GUT GF 10 M20 A0 | Revos Basic Grundarmatur m. låg 2xM20 Size: 10 incl. forskruning |
| 70.340.1035.1 | Bund BAS GUT GF 10 M20 A1 | Revos Basic Grundarmatur m. låg 2xM20 Size: 10 excl. forskruning |
| 70.341.1035.0 | Bund BAS GUT GG 10 M20 A0 | Revos Basic Grundarmatur Mit Deckel m. låg M20 Size: 10 incl. forskruning g |
| 70.341.1035.1 | Bund BAS GUT GG 10 M20 A1 | Revos Basic Grundarmatur Mit Deckel m. låg M20 Size: 10 excl. forskruning g |
| 70.342.1035.0 | Bund BAS GUT GH 10 M20 A0 | Revos Basic Grundarmatur Mit Deckel m. låg M20 Size: 10 incl. forskruning g |
| 70.342.1035.1 | Bund BAS GUT GH 10 M20 A1 | Revos Basic Grundarmatur Mit Deckel m. låg M20 Size: 10 excl. forskruning g |
| 70.343.1035.0 | Bund BAS GUT GI 10 M20 A0 | Revos Basic Grundarmatur m. låg M20 bund Size: 10 incl. forskruning |
| 70.343.1035.1 | Bund BAS GUT GI 10 M20 A1 | Revos Basic Grundarmatur m. låg M20 bund Size: 10 excl. forskruning |
| 70.344.1035.1 | Bund BAS GUT GB 10 M25 A | Revos Basic Grundarmatur m. låg 2xM25 Size: 10 excl. forskruning |
| 73.330.1035.0 | Bund BAS GUT GB 10HM25 50 A0 | Revos Basic Grundarmatur 2xM25 Size: 10H incl. forskruning |
| 73.330.1035.1 | Bund BAS GUT GB 10HM25 50 A1 | Revos Basic Grundarmatur 2xM25 Size: 10H excl. forskruning |
| 73.331.1035.0 | Bund BAS GUT GC 10HM25 50 A0 | Revos Basic Grundarmatur M25 Size: 10H incl. forskruning 500V |
| 73.331.1035.1 | Bund BAS GUT GC 10HM25 50 A1 | Revos Basic Grundarmatur M25 Size: 10H excl. forskruning 500V |
| 73.334.1035.0 | Bund BAS GUT GB 10HM32 50 A0 | Revos Basic Grundarmatur 2xM32 Size: 10H incl. forskruning |
| 73.334.1035.1 | Bund BAS GUT GB 10HM32 50 A1 | Revos Basic Grundarmatur 2xM32 Size: 10H excl. forskruning |
| 73.335.1035.0 | Bund BAS GUT GC 10HM32 50 A0 | Revos Basic Grundarmatur M32 Size: 10H incl. forskruning |
| 73.335.1035.1 | Bund BAS GUT GC 10HM32 50 A1 | Revos Basic Grundarmatur M32 Size: 10H excl. forskruning |
| 73.340.1035.0 | Bund BAS GUT GF 10HM25 50 A0 | Revos Basic Grundarmatur 2xM25 Size: 10H incl. forskruning |
| 73.340.1035.1 | Bund BAS GUT GF 10HM25 50 A1 | Revos Basic Grundarmatur 2xM25 Size: 10H excl. forskruning |
| 73.341.1035.0 | Bund BAS GUT GG 10HM25 50 A0 | Revos Basic Grundarmatur Mit Deckel M25 incl. forskruning |
| 73.341.1035.1 | Bund BAS GUT GG 10HM25 50 A1 | Revos Basic Grundarmatur Mit Deckel M25 Size: 10H excl. forskruning |
| 73.342.1035.0 | Bund BAS GUT GH 10HM25 50 A0 | Revos Basic Grundarmatur Mit Deckel M25 incl. forskruning |
| 73.342.1035.1 | Bund BAS GUT GH 10HM25 50 A1 | Revos Basic Grundarmatur Mit Deckel M25 excl. forskruning |
| 73.344.1035.0 | Bund BAS GUT GF 10HM32 50 A0 | Revos Basic Grundarmatur 2xM32 incl. forskruning |
| 73.344.1035.1 | Bund BAS GUT GF 10HM32 50 A1 | Revos Basic Grundarmatur 2xM32 Size: 10H excl. forskruning |
| 73.345.1035.0 | Bund BAS GUT GG 10HM32 50 A0 | Revos Basic Grundarmatur M32 incl. forskruning |
| 73.345.1035.1 | Bund BAS GUT GG 10HM32 50 A1 | Revos Basic Grundarmatur M32 excl. forskruning |
| 73.346.1035.0 | Bund BAS GUT GH 10HM32 50 A0 | Revos Basic Grundarmatur M32 incl. forskruning |
| 73.346.1035.1 | Bund BAS GUT GH 10HM32 50 A1 | Revos Basic Grundarmatur M32 excl. forskruning |



| | | | |
|-----------------------------------------------------------------------------------------------------------------------------------------------------------------------------------------------------------------------------------------|-----------------------------------------------------------------------------------------------|--------------------------------------------------------------------------------------------------------------------------------------------------------------------------------------------------------------------------------------------|--------------------------------------------------------------|
| Toleranzierung nach DIN 7167/Tolerance system acc. to DIN 7167. [This DIN-standard describes the envelope principle. According to the envelope principle the deviations of form and parallelism are limited by the size tolerances]. | | ja/yes <input checked="" type="checkbox"/> Stoffverbots- und Deklarationsliste nach UU-TQM-05/03 ist einzuhalten. Conformity with Wieland document UU-TQM-05/03 list of prohibited / declarable hazardous substances to be declared! | |
| Freitoleranz nach General tolerance | CAD - Zeichnung, keine manuellen Änderungen CAD - drawing, no manual modifications allowed | 1. Verwendung: First Use: | Blatt: 1 von 1 Sheet: 1 of 1 |
| Werkstoff/Material | 2005 | Tag/Date | Name |
| gezeichnet drawn | 21.02. | Schnitt J. | |
| geprüft checked | - | - | - |
| gezeichnet drawn | - | - | - |
| geprüft checked | - | - | - |
| Maße in mm/Dimensions are in mm | | | |
| c | 04.10.2006/ | Vol. | mm Dtl./Surf. |
| b | 15.09.2006/ | | |
| a | 06.09.2006/ | | |
| Index | Datum / Blatt Date / Sheet | Ersatz für/Replacement for: - | |
| Änderung/Revision | Type | | Benennung/Title |
| | wieland | | KONTAKTEINSATZ |
| | Elektrische Verbindungen | | Buchseinsatz / Steckereinsatz socket insert / plug insert |

70700045801K_1.cdw/1044.teschn 2006-10-04T13:25:01 1:000