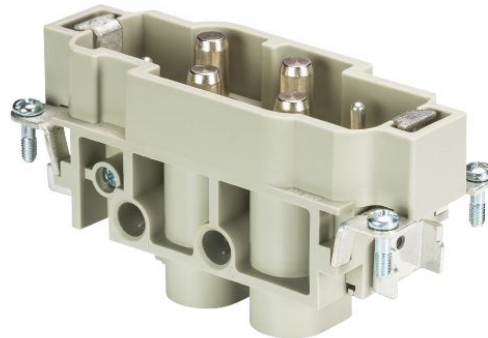


Datablad

Art. Nr. 72.215.0653.0

Han indsats POW STS 4/2 FA DB AG

Revos Power Indsats han skrue 4+2-pol 690/400V/82A/16A
Indsats



| | |
|-------------|---------------|
| Art. Nr. | 72.215.0653.0 |
| EAN | 4015573346390 |
| Ordre enhed | 10 styk |

Godkendelser



Specifikationer

Generelt

| | |
|---|-------------|
| Model | Han indsats |
| Brandbarheds klasse af isoleringsmateriale iht. med UL 94 | HB |
| Farve | grå |
| Stikcykler | 200 |
| Forureningsgrad | 3 |
| Modular version | nej |
| alternativ størrelse | 16 |
| Min. Driftstemperaturområde | -40 °C |
| Maks. Driftstemperaturområde | 120 °C |

Tilslutningsdata

| | |
|---|--------------------|
| Tilslutning | skruetilslutning |
| Antal poler | 4 |
| Ekskl. skifte kontakter | 0 |
| Antal poler nominel strøm 2 | 2 |
| Antal poler nominel strøm 3 | 0 |
| Totalt antal af poler (uden jord kontakt) | 6 |
| Med lederbeskyttelse | nej |
| Min. lederdiameter Massiv (massiv/flerkoret) | 1 mm ² |
| Maks. lederdiameter Massiv (massiv/flerkoret) | 16 mm ² |
| Beskyttelseskontakt | ja |

Specifikationer UL/CSA

| | |
|---------------------------------------|--------------------|
| Nominel spænding i henhold til UL/CSA | 600 V |
| Nominel strøm i henhold til UL | 82 A |
| Nominel strøm i henhold til CSA | 70 A |
| Min. kvadrat flerkoret leder | 1 mm ² |
| Maks. kvadrat flerkoret leder | 16 mm ² |
| Kvadrat fleksibel AWG wire | 16-4 AWG |

Model

| | |
|----------|-----|
| med huse | nej |
|----------|-----|

Kontakter

| | |
|--------------------|----------------|
| Kontakt material | Kobberlegering |
| overflade | forsølvet |
| overgangsmodstand | # 1,5 mOhm |
| Afisoleringslængde | 15 mm |

Skruehoved design / anbefalet tilspændingsmoment

| | |
|-------------------|----------------------|
| Monterings skruer | H1/0,5-0,7 Nm |
| spændeskruer | H1/0,5-0,7 Nm |
| Jordleder skruer | M5/2,0-2,5Nm ligeærv |

Specifikationer DIN EN 61984

| | |
|-------------------------|-------|
| Nominal spænding | 690 V |
| Nominal spænding 2 | 400 V |
| Nominal spænding til PE | 690 V |
| Nominal strøm | 82 A |
| Nominal strøm 2 | 16 A |
| Nominal impuls spænding | 6 kV |

montage

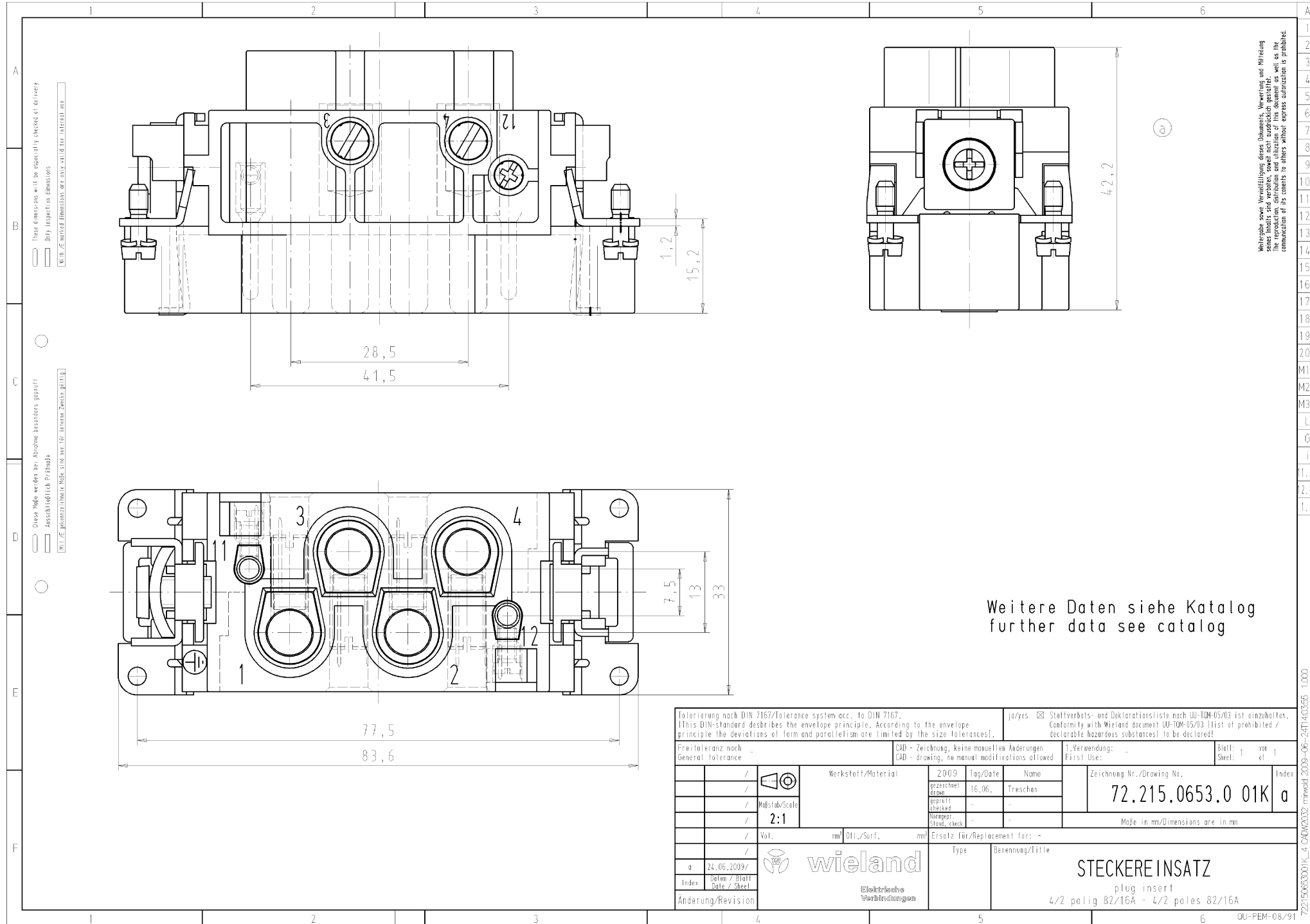
| Art. Nr. | Type | Beskrivelse |
|---------------|-----------------------------|--|
| 72.205.0653.0 | POW BUS 4/2 FA DB AG | Revos Power Indsats hun skrue 4+2-pol 690/400V/82A/16A Indsats |
| 76.350.4035.0 | Hus BAS GOT GG 40HM25 50 A0 | Revos Basic stik M25 Size: 16H incl. forskrning |
| 76.350.4035.1 | Hus BAS GOT GG 40HM25 50 A1 | Revos Basic stik M25 Size: 16H excl. forskrning |
| 76.350.4035.2 | Hus BAS GOT GG 40HM25 50 A2 | Revos Basic stik M25 Size: 16H m. studs |
| 76.350.4035.3 | Hus BAS GOT GG 16H M25 A3 | Revos Basic stik M25 Size: 16H incl. trompet forskr. |
| 76.351.1635.0 | Hus BAS GOT GH 10H M20 A0 | Revos Basic stik M25 incl. forskrning |
| 76.351.1635.1 | Hus BAS GOT GH 16H M20 A1 | Revos Basic stik M25 excl. forskrning |
| 76.351.1635.2 | Hus BAS GOT GH 10H M20 A2 | |
| 76.351.1635.3 | Hus BAS GOT GH 10H M20 A3 | |
| 76.352.4035.0 | Hus BAS GOT GI 40HM25 50 A0 | Revos Basic stik M25 Size: 16H incl. forskrning |
| 76.352.4035.1 | Hus BAS GOT GI 16HM25 A1 | Revos Basic stik M25 Size: 16H excl. forskrning |
| 76.352.4035.2 | Hus BAS GOT GI 40HM25 50 A2 | Revos Basic stik M25 Size: 16H m. studs |
| 76.352.4035.3 | Hus BAS GOT GI 16H M25 A3 | Revos Basic stik M25 Size: 16H incl. trompet forskr. |
| 76.353.4035.0 | Hus BAS GOT GG 40HM32 50 A0 | Revos Basic stik M32 Size: 16H incl. forskrning |
| 76.353.4035.1 | Hus BAS GOT GG 16HM32 A1 | Revos Basic stik M32 Size: 16H excl. forskrning |
| 76.353.4035.2 | Hus BAS GOT GG 40HM32 50 A2 | Revos Basic stik M32 Size: 16H m. studs |
| 76.353.4035.3 | Hus BAS GOT GG 16H M32 A3 | Revos Basic stik M32 Size: 16H incl. trompet forskr. |
| 76.354.4035.0 | Hus BAS GOT GI 40HM32 50 A0 | Revos Basic stik M32 Size: 16H incl. forskrning |
| 76.354.4035.1 | Hus BAS GOT GI 40HM32 50 A1 | Revos Basic stik M32 Size: 16H excl. forskrning |
| 76.354.4035.2 | Hus BAS GOT GI 40HM32 50 A2 | Revos Basic stik M32 Size: 16H m. studs |
| 76.354.4035.3 | Hus BAS GOT GI 16H M32 A3 | Revos Basic stik M32 Size: 16H incl. trompet forskr. |
| 76.360.4035.0 | Hus BAS GOT GG 16H M40 A0 | Revos Basic stik incl. forskrning |
| 76.360.4035.1 | Hus BAS GOT GG 40HM40 50 A1 | Revos Basic stik M40 Size: 16H excl. forskrning 500V |
| 76.362.4035.1 | Hus BAS GOT GI 40HM40 50 A1 | Revos Basic stik M40 Size: 16H excl. forskrning |
| 76.374.4035.0 | Hus BAS GOT GL 40HM32 50 A0 | Revos Basic Stik til stik hus med pakning M32 incl. forskrning |
| 71.320.1628.0 | Bund BAS GUT GK 16 A | Revos Basic chassisarmatur Size: 16 |
| 71.325.1628.0 | Bund BAS GUT GP 16 A | Revos Basic chassisarmatur m. låg Size: 16 |
| 71.330.1635.0 | Bund BAS GUT GL 16 M25 A0 | Revos Basic Grundarmatur 2xM25 Size: 16 incl. forskrning |
| 71.330.1635.1 | Bund BAS GUT GL 16 M25 A1 | Revos Basic Grundarmatur 2xM25 Size: 16 excl. forskrning |
| 71.331.1635.0 | Bund BAS GUT GM 16 M25 A0 | Revos Basic Grundarmatur M25 Size: 16 incl. forskrning |
| 71.331.1635.1 | Bund BAS GUT GM 16 M25 A1 | Revos Basic Grundarmatur M25 Size: 16 excl. forskrning |
| 71.333.1635.0 | Bund BAS GUT GO 16 M25 A0 | Revos Basic Grundarmatur M25 bund Size: 16 incl. forskrning |
| 71.333.1635.1 | Bund BAS GUT GO 16 M25 A1 | Revos Basic Grundarmatur M25 bund Size: 16 excl. forskrning |

| | | |
|---------------|------------------------------|---|
| 71.340.1635.0 | Bund BAS GUT GR 16 M25 A0 | Revos Basic Grundarmatur 2xM25 Size: 16 incl. forskruning |
| 71.340.1635.1 | Bund BAS GUT GR 16 M25 A1 | Revos Basic Grundarmatur 2xM25 Size: 16 excl. forskruning |
| 71.341.1635.0 | Bund BAS GUT GS 16 M25 A0 | Revos Basic Grundarmatur Mit Deckel M25 Size: 16 incl. forskruning |
| 71.341.1635.1 | Bund BAS GUT GS 16 M25 A1 | Revos Basic Grundarmatur Mit Deckel M25 Size: 16 excl. forskruning |
| 71.342.1635.0 | Bund BAS GUT GT 16 M25 A0 | Revos Basic Grundarmatur Mit Deckel M25 Size: 16 incl. forskruning |
| 71.342.1635.1 | Bund BAS GUT GT 16 M25 A1 | Revos Basic Grundarmatur Mit Deckel M25 Size: 16 excl. forskruning |
| 71.343.1635.0 | Bund BAS GUT GU 16 M25 A0 | Revos Basic Grundarmatur M25 bund Size: 16 incl. forskruning |
| 71.343.1635.1 | Bund BAS GUT GU 16 M25 A1 | Revos Basic Grundarmatur M25 bund Size: 16 excl. forskruning |
| 76.330.4035.0 | Bund BAS GUT GL 40HM25 50 A0 | Revos Basic Grundarmatur 2xM25 Size: 16H incl. forskruning |
| 76.330.4035.1 | Bund BAS GUT GL 40HM25 50 A1 | Revos Basic Grundarmatur 2xM25 Size: 16H excl. forskruning |
| 76.331.4035.0 | Bund BAS GUT GM 40HM25 50 A0 | Revos Basic Grundarmatur M25 Size: 16H incl. forskruning |
| 76.331.4035.1 | Bund BAS GUT GM 40HM25 50 A1 | Revos Basic Grundarmatur M25 Size: 16H excl. forskruning |
| 76.333.4035.0 | Bund BAS GUT GO 40HM25 50 A0 | Revos Basic Grundarmatur M25 bund Size: 16H incl. forskruning |
| 76.333.4035.1 | Bund BAS GUT GO 40HM25 50 A1 | Revos Basic Grundarmatur M25 bund Size: 16H excl. forskruning |
| 76.334.4035.0 | Bund BAS GUT GL 40HM32 50 A0 | Revos Basic Grundarmatur 2xM32 Size: 16H incl. forskruning |
| 76.334.4035.1 | Bund BAS GUT GL 40HM32 50 A1 | Revos Basic Grundarmatur 2xM32 Size: 16H excl. forskruning |
| 76.335.4035.0 | Bund BAS GUT GM 40HM32 50 A0 | Revos Basic Grundarmatur M32 Size: 16H incl. forskruning |
| 76.335.4035.1 | Bund BAS GUT GM 40HM32 50 A1 | Revos Basic Grundarmatur M32 Size: 16H excl. forskruning |
| 76.337.4035.0 | Bund BAS GUT GO 40HM32 50 A0 | Revos Basic M32 Size: 16H incl. forskruning |
| 76.337.4035.1 | Bund BAS GUT GO 40HM32 50 A1 | Revos Basic M32 Size: 16H excl. forskruning |
| 76.340.4035.0 | Bund BAS GUT GR 40HM25 50 A0 | Revos Basic Grundarmatur 2xM25 Size: 16 incl. forskruning |
| 76.340.4035.1 | Bund BAS GUT GR 40HM25 50 A1 | Revos Basic Grundarmatur 2xM25 Size: 16 excl. forskruning |
| 76.341.4035.0 | Bund BAS GUT GS 40HM25 50 A0 | Revos Basic Grundarmatur Mit Deckel M25 Size: 16H incl. forskruning |
| 76.341.4035.1 | Bund BAS GUT GS 40HM25 50 A1 | Revos Basic Grundarmatur Mit Deckel M25 Size: 16H excl. forskruning |
| 76.342.4035.0 | Bund BAS GUT GT 40HM25 50 A0 | Revos Basic Grundarmatur Mit Deckel M25 Size: 16H incl. forskruning |
| 76.342.4035.1 | Bund BAS GUT GT 40HM25 50 A1 | Revos Basic Grundarmatur Mit Deckel M25 excl. forskruning |
| 76.343.4035.0 | Bund BAS GUT GU 40HM25 50 A0 | Revos Basic Grundarmatur M25 bund Size: 16H incl. forskruning |
| 76.343.4035.1 | Bund BAS GUT GU 40HM25 50 A1 | Revos Basic Grundarmatur M25 bund Size: 16H excl. forskruning |
| 76.344.4035.0 | Bund BAS GUT GR 40HM32 50 A0 | Revos Basic Grundarmatur 2xM32 Size: 16H incl. forskruning |
| 76.344.4035.1 | Bund BAS GUT GR 40HM32 50 A1 | Revos Basic Grundarmatur 2xM32 Size: 16H excl. forskruning |
| 76.345.4035.0 | Bund BAS GUT GS 16HM32 A0 | Revos Basic Grundarmatur M32 Size: 16H incl. forskruning |
| 76.345.4035.1 | Bund BAS GUT GS 40HM32 50 A1 | Revos Basic Grundarmatur M32 Size: 16H excl. forskruning |
| 76.346.4035.0 | Bund BAS GUT GT 40HM32 50 A0 | Revos Basic Grundarmatur M32 Size: 16H incl. forskruning |
| 76.346.4035.1 | Bund BAS GUT GT 40HM32 50 A1 | Revos Basic Grundarmatur M32 Size: 16H excl. forskruning |
| 76.347.4035.0 | Bund BAS GUT GU 40HM32 50 A0 | Revos Basic M32 Size: 16H incl. forskruning |
| 76.347.4035.1 | Bund BAS GUT GU 40HM32 50 A1 | Revos Basic M32 Size: 16H excl. forskruning |
| 72.250.1635.2 | Hus POW GOT GA 16 M40 69 A2 | |
| 73.350.4035.0 | Hus BAS GOT GA 16HM25 50 A0 | Revos Basic stik M25 Size: 16H incl. forskruning |
| 73.350.4035.1 | Hus BAS GOT GA 16HM25 50 A1 | Revos Basic stik M25 Size: 16H excl. forskruning |
| 73.350.4035.2 | Hus BAS GOT GA 16HM25 50 A2 | Revos Basic stik M25 Size: 16H m. studs |
| 73.350.4035.3 | Hus BAS GOT GA 16H M25 A3 | Revos Basic stik M25 Size: 16H incl. trompet forskr. |
| 73.351.1635.0 | Hus BAS GOT GB 16H M25 A0 | Revos Basic stik M25 incl. forskruning |
| 73.351.1635.1 | Hus BAS GOT GB 16H M25 A1 | Revos Basic stik M25 excl. forskruning |
| 73.351.1635.2 | Hus BAS GOT GB 16H M25 A2 | |
| 73.351.1635.3 | Hus BAS GOT GB 16H M25 A3 | |
| 73.352.4035.0 | Hus BAS GOT GC 16HM25 50 A0 | Revos Basic stik M25 Size: 16H incl. forskruning |
| 73.352.4035.1 | Hus BAS GOT GC 16HM25 50 A1 | Revos Basic stik M25 Size: 16H excl. forskruning |
| 73.352.4035.2 | Hus BAS GOT GC 16HM25 50 A2 | Revos Basic stik M25 Size: 16H m. studs |
| 73.352.4035.3 | Hus BAS GOT GC 16H M25 A3 | Revos Basic stik M25 Size: 16H incl. trompet forskr. |
| 73.353.4035.0 | Hus BAS GOT GA 40HM32 50 A0 | Revos Basic stik M32 Size: 16H incl. forskruning |
| 73.353.4035.1 | Hus BAS GOT GA 40HM32 50 A1 | Revos Basic stik M32 Size: 16H excl. forskruning |
| 73.353.4035.2 | Hus BAS GOT GA 40HM32 50 A2 | Revos Basic stik M32 Size: 16H m. studs |
| 73.353.4035.3 | Hus BAS GOT GA 16HM32 A3 | Revos Basic stik M32 Size: 16H incl. trompet forskr. |
| 73.354.4035.0 | Hus BAS GOT GC 16HM32 50 A0 | Revos Basic stik M32 Size: 16H incl. forskruning |
| 73.354.4035.1 | Hus BAS GOT GC 16HM32 50 A1 | Revos Basic stik M32 Size: 16H excl. forskruning |
| 73.354.4035.2 | Hus BAS GOT GC 16HM32 50 A2 | Revos Basic stik M32 Size: 16H m. studs |
| 73.354.4035.3 | Hus BAS GOT GC 16HM32 A2 | Revos Basic stik M32 Size: 16H incl. trompet forskr. |



| | | |
|---------------|------------------------------|--|
| 73.355.4035.0 | Hus BAS GOT GD 16HM25 50 A0 | Revos Basic stik M25 Size: 16H incl. forskruning 500V |
| 73.355.4035.1 | Hus BAS GOT GD 16HM25 50 A1 | Revos Basic stik M25 Size: 16H excl. forskruning |
| 73.355.4035.2 | Hus BAS GOT GD 16HM25 50 A2 | Revos Basic stik M25 Size: 16H m. studs 500V |
| 73.355.4035.3 | Hus BAS GOT GD 16HM25 A2 | Revos Basic stik M25 Size: 16H incl. trompet forskr. |
| 73.357.4035.0 | Hus BAS GOT GF 16HM25 50 A0 | Revos Basic stik M25 Size: 16H incl. forskruning |
| 73.357.4035.1 | Hus BAS GOT GF 16HM25 50 A1 | Revos Basic stik M25 Size: 16H excl. forskruning |
| 73.357.4035.2 | Hus BAS GOT GF 16HM25 50 A2 | Revos Basic stik M25 Size: 16H m. studs |
| 73.357.4035.3 | Hus BAS GOT GF 16HM25 A3 | Revos Basic stik M25 Size: 16H incl. trompet forskr. |
| 73.358.4035.0 | Hus BAS GOT GD 16HM32 50 A0 | Revos Basic stik M32 Size: 16H incl. forskruning |
| 73.358.4035.1 | Hus BAS GOT GD 16HM32 50 A1 | Revos Basic stik M32 Size: 16H excl. forskruning |
| 73.358.4035.2 | Hus BAS GOT GD 16HM32 50 A2 | Revos Basic stik M32 Size: 16H m. studs |
| 73.358.4035.3 | Hus BAS GOT GD 16HM32 A3 | Revos Basic stik M32 Size: 16H incl. trompet forskr. |
| 73.359.4035.0 | Hus BAS GOT GF 16HM32 50 A0 | Revos Basic stik M32 Size: 16H incl. forskruning |
| 73.359.4035.1 | Hus BAS GOT GF 16HM32 50 A1 | Revos Basic stik M32 Size: 16H excl. forskruning |
| 73.359.4035.2 | Hus BAS GOT GF 16HM32 50 A2 | Revos Basic stik M32 Size: 16H m. studs |
| 73.359.4035.3 | Hus BAS GOT GF 16HM32 A3 | Revos Basic stik M32 Size: 16H incl. trompet forskr. |
| 73.360.4035.0 | Hus BAS GOT GA 16HM40 A0 | Revos Basic stik incl. forskruning |
| 73.360.4035.1 | Hus BAS GOT GA 16HM40 50 A1 | Revos Basic stik M40 Size: 16H excl. forskruning 500V |
| 73.360.4035.2 | Hus BAS GOT GA 16HM40 A2 | Revos Basic stik m. studs |
| 73.362.4035.0 | Hus BAS GOT GC 16HM40 A0 | Revos Basic stik incl. forskruning |
| 73.362.4035.1 | Hus BAS GOT GC 16HM40 50 A1 | Revos Basic stik M40 Size: 16H excl. forskruning 500V |
| 70.320.1628.0 | Bund BAS GUT GA 16 A | Revos Basic chassisarmatur Size: 16 |
| 70.325.1628.0 | Bund BAS GUT GE 16 A | Revos Basic chassisarmatur m. låg Size: 16 |
| 70.330.1635.0 | Bund BAS GUT GB 16 M25 A0 | Revos Basic Grundarmatur 2xM25 Size: 16 incl. forskruning |
| 70.330.1635.1 | Bund BAS GUT GB 16 M25 A1 | Revos Basic Grundarmatur 2xM25 Size: 16 excl. forskruning |
| 70.331.1635.0 | Bund BAS GUT GC 16 M25 A0 | Revos Basic Grundarmatur M25 Size: 16 incl. forskruning |
| 70.331.1635.1 | Bund BAS GUT GC 16 M25 A1 | Revos Basic Grundarmatur M25 Size: 16 excl. forskruning |
| 70.333.1635.0 | Bund BAS GUT GD 16 M25 A0 | Revos Basic Grundarmatur M25 bund Size: 16 incl. forskruning |
| 70.333.1635.1 | Bund BAS GUT GD 16 M25 A1 | Revos Basic Grundarmatur M25 bund Size: 16 excl. forskruning |
| 70.340.1635.0 | Bund BAS GUT GF 16 M25 A0 | Revos Basic Grundarmatur m. låg 2xM25 Size: 16 incl. forskruning |
| 70.340.1635.1 | Bund BAS GUT GF 16 M25 A1 | Revos Basic Grundarmatur m. låg 2xM25 Size: 16 excl. forskruning |
| 70.341.1635.0 | Bund BAS GUT GG 16 M25 A0 | Revos Basic Grundarmatur Mit Deckel m. låg M25 Size: 16 incl. forskrunin g |
| 70.341.1635.1 | Bund BAS GUT GG 16 M25 A1 | Revos Basic Grundarmatur Mit Deckel m. låg M25 Size: 16 excl. forskrunin g |
| 70.342.1635.0 | Bund BAS GUT GH 16 M25 A0 | Revos Basic Grundarmatur Mit Deckel m. låg M25 Size: 16 incl. forskrunin g |
| 70.342.1635.1 | Bund BAS GUT GH 16 M25 A1 | Revos Basic Grundarmatur Mit Deckel m. låg M25 Size: 16 excl. forskrunin g |
| 70.343.1635.0 | Bund BAS GUT GI 16 M25 A0 | Revos Basic Grundarmatur m. låg M25 bund Size: 16 incl. forskruning |
| 70.343.1635.1 | Bund BAS GUT GI 16 M25 A1 | Revos Basic Grundarmatur m. låg M25 bund Size: 16 excl. forskruning |
| 73.330.4035.0 | Bund BAS GUT GB 16HM25 50 A0 | Revos Basic Grundarmatur 2xM25 Size: 16H incl. forskruning |
| 73.330.4035.1 | Bund BAS GUT GB 16HM25 50 A1 | Revos Basic Grundarmatur 2xM25 Size: 16H excl. forskruning |
| 73.331.4035.0 | Bund BAS GUT GC 16HM25 50 A0 | Revos Basic Grundarmatur M25 Size: 16H incl. forskruning |
| 73.331.4035.1 | Bund BAS GUT GC 16M25 50 A1 | Revos Basic Grundarmatur M25 Size: 16H excl. forskruning |
| 73.333.4035.0 | Bund BAS GUT GD 16HM25 50 A0 | Revos Basic Grundarmatur M25 bund Size: 16H incl. forskruning |
| 73.333.4035.1 | Bund BAS GUT GD 16HM25 50 A1 | Revos Basic Grundarmatur M25 bund Size: 16H excl. forskruning |
| 73.334.4035.0 | Bund BAS GUT GB 16HM32 50 A0 | Revos Basic Grundarmatur 2xM32 Size: 16H incl. forskruning |
| 73.334.4035.1 | Bund BAS GUT GB 16HM32 50 A1 | Revos Basic Grundarmatur 2xM32 Size: 16H excl. forskruning |
| 73.335.4035.0 | Bund BAS GUT GC 16HM32 50 A0 | Revos Basic Grundarmatur M32 Size: 16H incl. forskruning |
| 73.335.4035.1 | Bund BAS GUT GC 16HM32 50 A1 | Revos Basic Grundarmatur M32 Size: 16H excl. forskruning |
| 73.337.4035.0 | Bund BAS GUT GD 16HM32 50 A0 | Revos Basic M32 Size: 16H incl. forskruning |
| 73.337.4035.1 | Bund BAS GUT GD 16HM32 50 A1 | Revos Basic M32 Size: 16H excl. forskruning |
| 73.338.4035.1 | Bund BAS GUT GB 16H M40 A1 | Revos Basic M40 Size: 16H excl. forskruning |
| 73.339.4035.0 | Bund BAS GUT GC 16H M40 A0 | Revos Basic incl. forskruning |
| 73.339.4035.1 | Bund BAS GUT GC 16H M40 A1 | Revos Basic M40 Size: 16H excl. forskruning |
| 73.340.4035.0 | Bund BAS GUT GB 16H M40 A1 | Revos Basic Grundarmatur 2xM25 Size: 16 incl. forskruning |
| 73.340.4035.1 | Bund BAS GUT GF 16HM25 50 A1 | Revos Basic Grundarmatur 2xM25 Size: 16 excl. forskruning |
| 73.341.4035.0 | Bund BAS GUT GC 16H M40 A1 | Revos Basic Grundarmatur Mit Deckel M25 Size: 16H incl. forskruning |
| 73.341.4035.1 | Bund BAS GUT GG 16HM25 50 A1 | Revos Basic Grundarmatur Mit Deckel M25 Size: 16H excl. forskruning |
| 73.342.4035.0 | Bund BAS GUT GH 16HM25 50 A0 | Revos Basic Grundarmatur Mit Deckel M25 Size: 16H incl. forskruning |

| | | |
|---------------|------------------------------|---|
| 73.342.4035.1 | Bund BAS GUT GH 16HM25 50 A1 | Revos Basic Grundarmatur Mit Deckel M25 Size: 16H excl. forskruning |
| 73.343.4035.0 | Bund BAS GUT GI 16HM25 50 A0 | Revos Basic Grundarmatur M25 bund Size: 16H incl. forskruning |
| 73.343.4035.1 | Bund BAS GUT GI 16HM25 50 A1 | Revos Basic Grundarmatur M25 bund Size: 16H excl. forskruning |
| 73.344.4035.0 | Bund BAS GUT GF 16HM32 50 A0 | Revos Basic Grundarmatur 2xM32 Size: 16H incl. forskruning |
| 73.344.4035.1 | Bund BAS GUT GF 16HM32 50 A1 | Revos Basic Grundarmatur 2xM32 Size: 16H excl. forskruning |
| 73.345.4035.0 | Bund BAS GUT GG 16HM32 50 A0 | Revos Basic Grundarmatur M32 Size: 16H incl. forskruning |
| 73.345.4035.1 | Bund BAS GUT GG 16HM32 50 A1 | Revos Basic Grundarmatur M32 Size: 16H excl. forskruning |
| 73.346.4035.0 | Bund BAS GUT GH 16HM32 50 A0 | Revos Basic Grundarmatur M32 Size: 16H incl. forskruning |
| 73.346.4035.1 | Bund BAS GUT GH 16HM32 50 A1 | Revos Basic Grundarmatur M32 Size: 16H excl. forskruning |
| 73.347.4035.0 | Bund BAS GUT GI 16HM32 50 A0 | Revos Basic M32 Size: 16H incl. forskruning |
| 73.347.4035.1 | Bund BAS GUT GI 40HM32 50 A1 | Revos Basic M32 Size: 16H excl. forskruning |



Weitere Daten siehe Katalog
further data see catalog

| | | | |
|--|--|--|--------------------|
| Tolerierung nach DIN 7167/Tolerance system acc. to DIN 7167. [This DIN standard describes the envelope principle. According to the envelope principle the deviations of form and parallelism are limited by the size tolerances]. | | ja/yes <input checked="" type="checkbox"/> Stoffverbots- und Deklarationsliste nach UU-TM-05/03 ist einzuhalten. Conformity with Wieland document UU-TM-05/03 list of prohibited / declarable hazardous substances to be declared! | |
| Freitoleranz nach General tolerance - | | CAD - Zeichnung, keine manuellen Änderungen CAD - drawing, no manual modifications allowed | |
| 1. Verwendung: First Use: - | | Blatt: 1 von Sheet: 1 of 1 | |
| Werkstoff/Material | | 2009 gezeichnet drawn | 16.06. Treschan |
| Maßstab/Scale | | 2:1 | |
| Vol. | | mm Dtl./Surf. mm | |
| Ersatz für/Replacement for: - | | Zeichnung Nr./Drawing No. | |
| wieland | | 72.215.0653.0 01K a | |
| Type | | Benennung/Title | |
| a 24.06.2009/ Date / Sheet | | STECKERE INSATZ plug insert | |
| Änderung/Revision | | 4/2 polig 82/16A - 4/2 poles 82/16A | |

Weitere sowie Verordnungen dieser Dokuments, Verwertung und Mitteilung
siehe, finally sind verboten, soweit nicht ausdrücklich gestattet.
The reproduction, distribution and utilization of this document as well as the
communication of its contents to others without express authorization is prohibited.