

Components

centre contact
 outer contact
 other metal parts
 housing
 insulator
 gasket

Electrical characteristics

voltage proof
 insulation resistance
 contact resistance
 centre contact
 outer contact

Environmental

RoHS compliant

Bauteile

Innenkontakt
 Außenkontakt
 sonstige Metallteile
 Gehäuse
 Isolierung
 Dichtung

Elektrische Eigenschaften

Prüfspannung
 Isolationswiderstand
 Durchgangswiderstand
 Innenkontakt
 Außenkontakt

Umgebung

RoHS konform

Materials / Material

CuSn4Pb4Zn4
 CuZn38Pb2
 CuZn39Pb3
 PBT black / schwarz (RAL 9005)
 PTFE
 NBR

Finish / Oberfläche

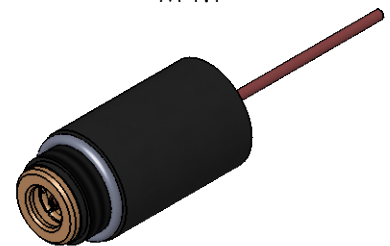
Cu1Ni2Au0,8
 Cu1Ni2Au0,8
 Cu2Ni5

2 kV_{eff} / 50 Hz
 > 10 GΩ

≤ 5 mΩ
 ≤ 2,5 mΩ

2011/65/EU

M 1:1



| | | | | | | | |
|---|-------------------------------|-------------|---|--------------------------|----------------------------|---------------------|----|
| Änd./ rev. index | Änderungs-Nr. / revision code | Datum/ date | Name/ name | Datum/ date | Name/ name | Gewicht/ weight [g] | |
| | | | gez./ drawn | 06.03.2018 | MA | | |
| | | | gepr./ appr | 03.04.2018 | HR | ca./approx. | 12 |
| Maßstab/ scale | | | Benennung/ title | | | | |
| 2:1 (1:1) | | | pH Glass Electrode Plug pH-Elektrodensteckkopf | | | | |
| untol. Maße/ dim. without tolerances according to | | | Untert./ doc. type | | Zeichnungsnr./ drawing no. | | |
| | | | K | | J01250A0018 | | |
| | | | Ersatz für/ replaces | | | | |
| | | | | | | | |
| | | | | Maße/ dimensions: mm | | | |
| | | | | Original : DIN A4 | | | |
| | | | | Blatt/ sheet 1 von/ of 1 | | | |