

8146/1051 Art. No. 136690



- Wide range of Ex e terminal boxes in various sizes and materials, degree of protection IP66
- Customised equipping in accordance with customer specifications
- Enclosures with captive cover screws, if required, flange on enclosure sides is possible

WebCode **8146A**



R. STAHL Series 8146 terminal boxes, made of high-quality, glass fibre-reinforced polyester resin, are ideal for use in harsh operating conditions. With eight basic sizes in various heights, they are universally usable. If requested by the customer, they are equipped with series terminals up to 300 mm² and, as an option, a flange on several enclosure sides is possible.

Technical Data

Explosion Protection

Scope of validity	IECEX European Union (ATEX)
Application range (zones)	1 2 21 22
IECEX gas certificate	IECEX PTB 06.0046
IECEX gas explosion protection	Ex eb IIC T6/T5 Gb
IECEX dust certificate	IECEX PTB 06.0046
IECEX dust explosion protection	Ex tb IIIC T80 °C ... T95 °C Db
ATEX gas certificate	PTB 01 ATEX 1016
ATEX gas explosion protection	⊕ II 2 G Ex eb IIC T6/T5 Gb
ATEX dust certificate	PTB 01 ATEX 1016
ATEX dust explosion protection	⊕ II 2 D Ex tb IIIC T80 °C ... T95 °C Db
EAC certificate	TS RU S-DE.AA71.B.00120
EAC gas explosion protection	⊕ 1 Ex e d ia mb IIC T6...T3 Gb X
EAC dust explosion protection	⊕ Ex tb IIIC T80° ... T135°C DbX
Certificates	ATEX (PTB), Brazil (ULB), Canada / USA (UL), China (NEPSI), EAC (LPE), IECEX (PTB), Korea (KGS), Taiwan (ITRI), USA (UL)
Ship approval	BVIS
Notes	CCC certificate available from 2021 onward

Electrical Data

Rated operational voltage AC	690 V
Rated operational voltage AC UL	0 – 1000 V
Rated operational current UL	0 A

8146/1051 Art. No. 136690

Ambient Conditions

Ambient temperature	-60 °C ... +40 °C (T6) -60 °C ... +55 °C (T5)
---------------------	--

Mechanical Data

Degree of protection note	according to IEC/EN 60529
Degree of protection IP (IEC 60529)	IP66
Enclosure material	Polyester resin, Glass fibre reinforced
Silicone-free	No
Clamping range max.	6 mm ²
Connection cross-section	4 mm ²
Installable terminals	4 mm ²
Max. no. of terminals 4 mm ²	16
Max. number of entries M16 side A	6
Max. number of entries M20 side A	4
Max. number of entries M25 side A	3
Max. number of entries M32 side A	2
Max. number of entries M40 side A	1
Max. number of entries M16 side B	6
Max. number of entries M20 side B	4
Max. number of entries M25 side B	3
Max. number of entries M32 side B	2
Max. number of entries M40 side B	1
Max. number of entries M16 side C	8
Max. number of entries M20 side C	6
Max. number of entries M25 side C	5
Max. number of entries M32 side C	3
Max. number of entries M40 side C	2
Max. number of entries M16 side D	8
Max. number of entries M20 side D	6
Max. number of entries M25 side D	5
Max. number of entries M32 side D	3
Max. number of entries M40 side D	2
Width	170 mm
Height	170 mm
Depth	91 mm
Weight	1 kg
Weight	2.2 lb

Components

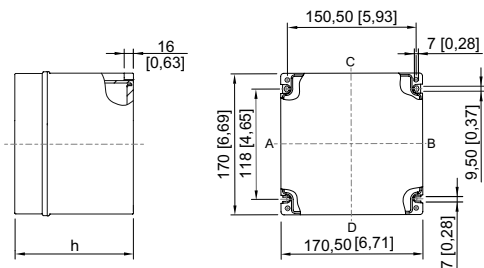
Entry 5	x PE bushing
Terminal rail	35 x 133 mm (1x)
Type of terminals 1	1 x Phoenix UT 2-conductor, 4 mm ² , grey
Earth rail	7 x 4 mm ² (1x)
Earth rail	7 x 4 mm ² (1x)

8146/1051 Art. No. 136690

Technical Drawings – Subject to Alterations



Dimensional Drawings (All Dimensions in mm [inches]) – Subject to Alterations



8146/.05.

8146/.051: h = 91 mm

8146/.052: h = 131 mm

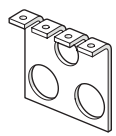
Accessories

Brass plate 2 mm for enclosure		Art. No.
	for 8146/.051, 8146/.052 (enclosure sides A / B) 8146/.S71 (enclosure sides A / B)	136914
	for 8146/.051, 8146/.052 (enclosure sides C / D) 8146/.061, 8146/.062 (enclosure sides A / B) 8146/.071, 8146/.072 (enclosure sides A / B)	136921
Brass plate 2 mm for flanges		Art. No.
	for flange size 1 (68 x 126 mm)	136888
Brass plate 3 mm for enclosure		Art. No.
	for 8146/.051, 8146/.052 (enclosure sides C / D) 8146/.061, 8146/.062 (enclosure sides A / B) 8146/.071, 8146/.072 (enclosure sides A / B)	136430
	for 8146/.051, 8146/.052 (enclosure sides A / B) 8146/.S71 (enclosure sides A / B)	136240
	for 8146/.051, 8146/.052 (enclosure sides C / D) 8146/.061, 8146/.062 (enclosure sides A / B) 8146/.071, 8146/.072 (enclosure sides A / B)	136283

8146/1051 Art. No. 136690

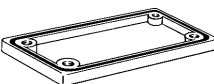
Brass plate 3 mm for flanges

Art. No.

	for flange size 1 (68 x 126 mm)	136201
--	---------------------------------	--------

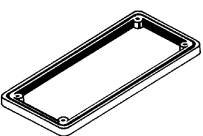
Flange

Art. No.

	Size 1: 68 x 128 mm, 2.8 mm thick	135978
	Size 1: 68 x 128 mm, 5.8 mm thick	136032


Frame

Art. No.

	Size 1, 68 x 128 mm	135974
--	---------------------	--------

Serrated lock washer

Art. No.

	for M25 (1 pcs.)	110706
	for M32 (1 pcs.)	110707
	for M40 (1 pcs.)	110708
	for M50 (1 pcs.)	110709
	for M63 (1 pcs.)	110710

We reserve the right to make alterations to the technical data, dimensions, weights, designs and products available without notice. The illustrations cannot be considered binding.