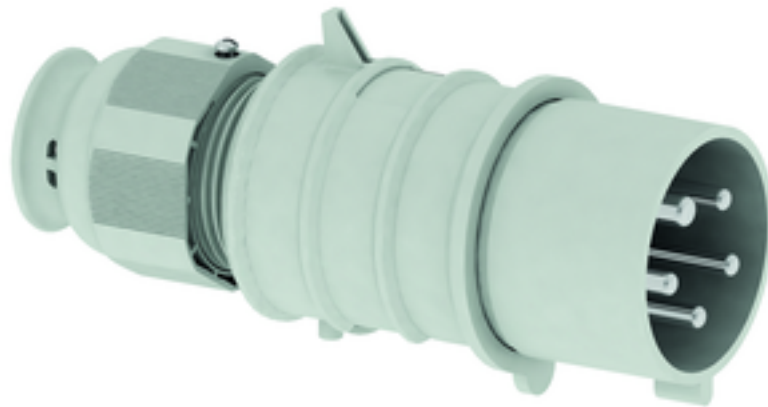


plug - with screwless terminals, for harsh applications



| Product description | |
|---------------------------|--|
| BALS-Prd.-Nr | 21907 |
| EAN | 4024941219075 |
| Product category | QUICK-CONNECT TE plug |
| Current | 16A |
| Number of poles | 5p |
| Arrangement of phases | 3p+N+PE |
| Position of earth contact | 1 h |
| Voltage | > 50V for all other not classified voltages and/or frequencies. This time position can additionally process in special applications, in which a distinction to standardized positions needed to be used. |

| Product description | |
|------------------------|--|
| Protection degree | IP44 |
| Colour code | grey RAL 7035 |
| Colour of appliance | Collar grey RAL 7035, Housing cover grey RAL 7035, Cable gland grey RAL 7035 |
| Connection design | screwless spring-clamp technology |
| Maximum conductor size | 2,5 qmm |
| Cable entry | with cable gland |
| Height | 154mm |
| Width | 65mm |
| Depth | 74mm |
| Material of enclosure | Polyamide |
| Contacts | The contact carrier is made of high temperature resistant material, the contacts are brass nickel plated |

| Additional technical properties | |
|---------------------------------|--|
| | Multi-Grip cable gland with gasket, integrated cable clamp and additional water evacuation openings, For cable diameter from 10 up to max. 21 mm |

| Logistics data | |
|----------------|-----------------|
| Weight/pcs | 0.18 kg / Piece |
| Packaging | Bag |
| Content amount | 1 ST |
| EAN | 4024941219075 |

| Logistics data | |
|----------------|---------------|
| Length | 74 mm |
| Width | 65 mm |
| Height | 154 mm |
| Weight | 0.181 kg |
| Volume | 740.74 ccm |
| Packaging | Carton |
| Content amount | 10 ST |
| EAN | 4024941969857 |
| Length | 245 mm |
| Width | 177 mm |
| Height | 185 mm |
| Weight | 1.933 kg |
| Volume | 7,140 ccm |

