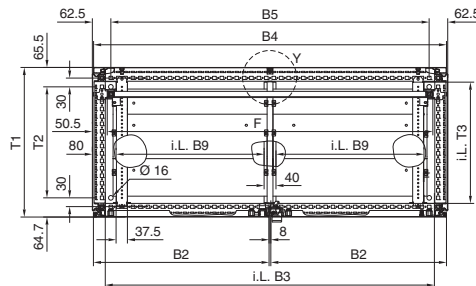
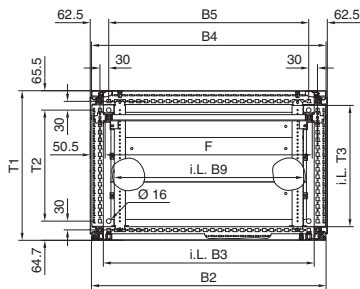
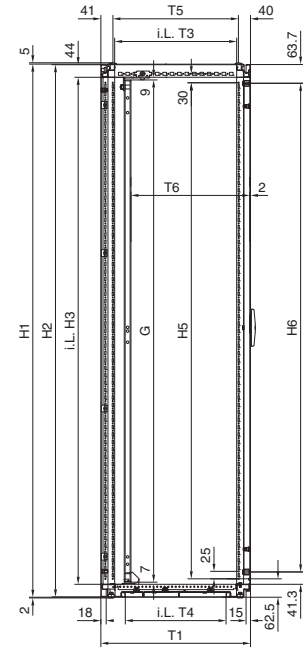
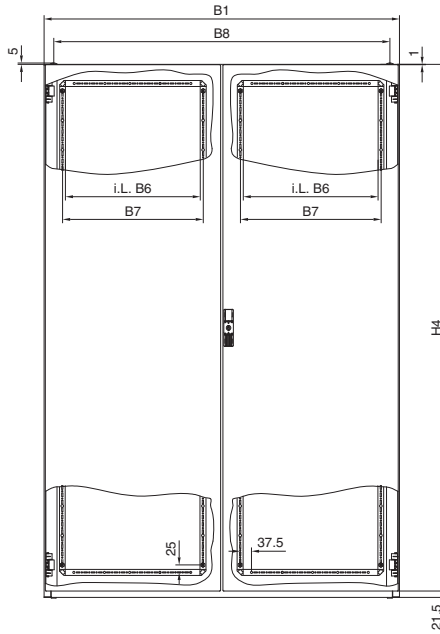
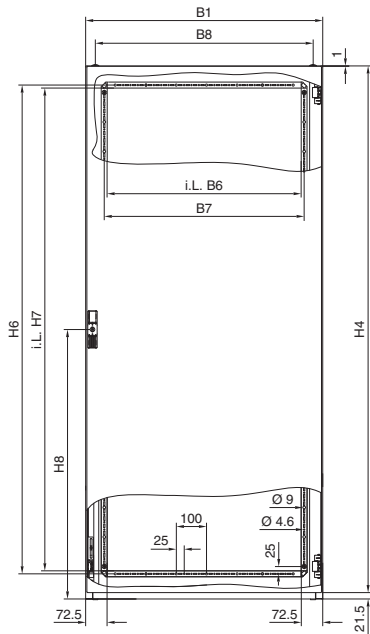
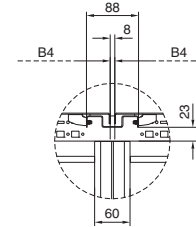


System enclosures SE 8



Detail Y (only for SE 5842.500 and SE 5846.500)



i.L. = Clearance width

Single-door

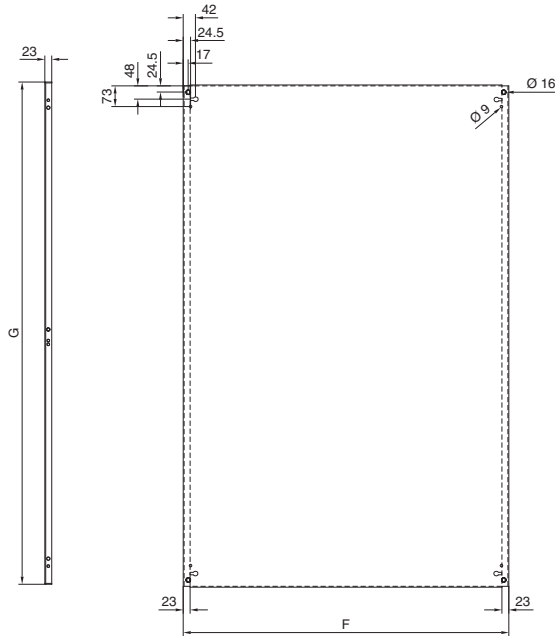
Model No. SE		Width dimensions mm									Height dimensions mm								Depth dimensions mm						Mounting plates mm		
Spray-finished	Stainless steel	B1	B2	B3	B4	B5	B6	B7	B8	B9	H1	H2	H3	H4	H5	H6	H7	H8	T1	T2	T3	T4	T5	T6	F	G	
	-	600	592	512	592	475	455	475	535	440	1800	1797	1712	1777.5	1675	1650	1630	910	405	275	312	240	324	126.5	499	1696	
	-	800	792	712	792	675	655	675	735	640	1800	1797	1712	1777.5	1675	1650	1630	910	405	275	312	240	324	-	699	1696	
	-	800	792	712	792	675	655	675	735	640	2000	1997	1912	1977.5	1875	1850	1830	1010	405	275	312	240	324	356.5	699	1896	
	-	800	792	712	792	675	655	675	735	640	2000	1997	1912	1977.5	1875	1850	1830	1010	505	375	412	340	424	126.5	699	1896	
	-	800	792	712	792	675	655	675	735	640	2000	1997	1912	1977.5	1875	1850	1830	1010	505	375	412	340	424	456.5	699	1896	
	5853.500	800	792	712	792	675	655	675	735	640	2000	1997	1912	1977.5	1875	1850	1830	1010	605	475	512	440	524	126.5	699	1896	
	-	5850.500	600	592	512	592	475	455	475	535	440	1600	1597	1512	1577.5	1475	1450	1430	810	405	275	312	240	324	126.5	499	1496
	-	5851.500	600	592	512	592	475	455	475	535	440	1800	1797	1712	1777.5	1675	1650	1630	910	505	375	412	340	424	126.5	499	1696
	-	5852.500	800	792	712	792	675	655	675	735	640	1800	1797	1712	1777.5	1675	1650	1630	910	505	375	412	340	424	456.5	699	1696
	-	5854.500	1000	992	912	992	875	855	875	935	400	1800	1797	1712	1777.5	1675	1650	1630	910	405	275	312	240	324	126.5	899	1696
	-	5854.500	1000	992	912	992	875	855	875	935	400	1800	1797	1712	1777.5	1675	1650	1630	910	405	275	312	240	324	356.5	899	1696

Enclosures

Enclosure systems

System enclosures SE 8

Mounting plate



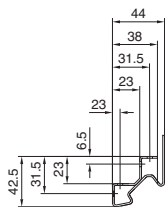
Enclosure

- B1 = Overall width
- B2 = Width of door
- B3 = Clearance of enclosure frame
- B5 = Section length of system punchings/ hole spacing base/plinth attachment
- B6 = Clearance of tubular door frame
- B7 = Distance between axes, tubular door frame holes
- B8 = Distance between lifting eyes
- B9 = Clearance in the base opening
- H1 = Overall height
- H2 = Height of rear panel
- H3 = Clearance of enclosure frame
- H4 = Height of door
- H5 = Section length of system punchings
- H6 = Distance bet. axes, tubular door frame holes
- H7 = Clearance of tubular door frame
- H8 = Distance from base to centre of lock
- T1 = Overall depth
- T2 = Section length of system punchings/ hole spacing base/plinth attachment
- T3 = Clearance of enclosure frame
- T4 = Clearance of base opening
- T5 = Centre of lifting eye to centre of lifting eye
- T6 = Possible mounting depth (mounting plate assembly) variable up to 149 mm on a 25 mm pitch pattern

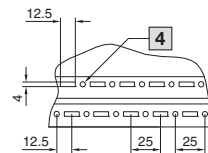
Mounting plate

- F = Overall width
- G = Overall height

Cross-section

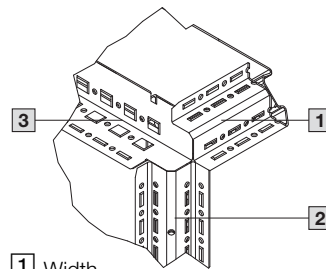


Pitch pattern of holes



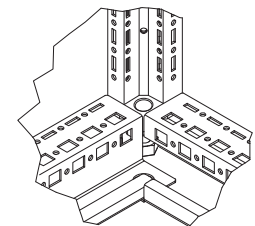
4 Ø 4.5 (Ø 4.7 for stainless steel)

Enclosure corner top



- 1 Width
- 2 Height
- 3 Depth

Enclosure corner bottom



Double-door

Model No. SE		Width dimensions mm									Height dimensions mm								Depth dimensions mm						Mounting plates mm		
Spray-finished	Stainless steel	B1	B2	B3	B4	B5	B6	B7	B8	B9	H1	H2	H3	H4	H5	H6	H7	H8	T1	T2	T3	T4	T5	T6	F	G	
5840.500	-	1000	492	912	992	875	355	375	935	400	1800	1797	1712	1777.5	1675	1650	1630	910	405	275	312	240	324			899	1696
5841.500	-	1200	592	1112	1192	1075	455	475	1135	500	1800	1797	1712	1777.5	1675	1650	1630	910	405	275	312	240	324	126.5		1099	1696
5842.500	-	1600	792	1512	792	1475	655	675	1535	690	1800	1797	1712	1777.5	1675	1650	1630	910	405	275	312	240	324	356.5		1499	1696
5843.500	-	1200	592	1112	1192	1075	455	475	1135	500	2000	1997	1912	1977.5	1875	1850	1830	1010	405	275	312	240	324			1099	1896
5844.500	5855.500	1200	592	1112	1192	1075	455	475	1135	500	2000	1997	1912	1977.5	1875	1850	1830	1010	505	375	412	340	424	126.5 - 456.5		1099	1896
5845.500	-	1200	592	1112	1192	1075	455	475	1135	500	2000	1997	1912	1977.5	1875	1850	1830	1010	605	475	512	440	524	126.5 -		1099	1896
5846.500	-	1800	892	1712	892	1675	755	775	1735	790	2000	1997	1912	1977.5	1875	1850	1830	1010	505	375	412	340	424	- 556.5		1699	1896