

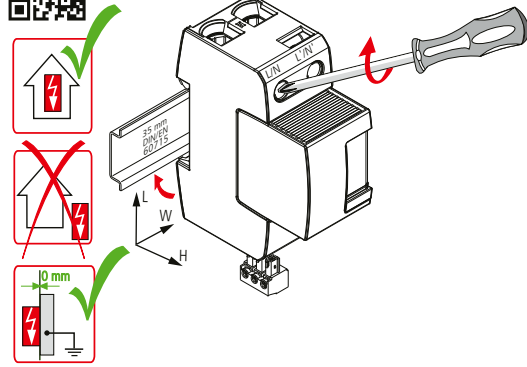
DEHNsecure M DSE M 1 ... (FM)

- DE Einbauanleitung
- GB Installation instructions
- IT Istruzioni di montaggio
- FR Instructions de montage
- NL Montagehandleiding
- ES Instrucciones de montaje
- PT Instruções de montagem
- DK Monteringsvejledning
- SE Monteringsanvisning
- FI Asennusohje
- GR Οδηγίες συναρμολόγησης
- PL Instrukcja montażu
- CZ Montážní návod
- TR Kurulum Talimatları
- RU Инструкция по монтажу
- CN 安装说明
- HU Szerelési útmutató
- JP 設置説明書



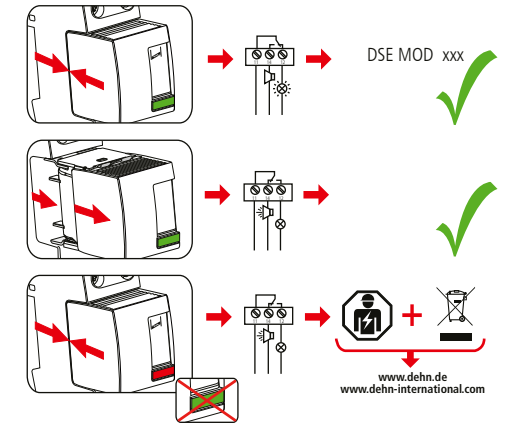
1 IEC 61643-11...  
1 EN 61643-11...

PZ 2 7 Nm

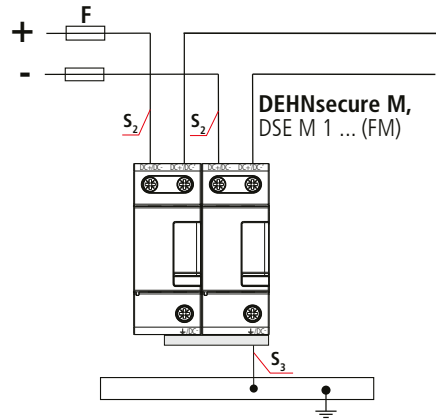


	DSE M 1 60 (FM)	DSE M 1 220 (FM)	DSE M 1 242 (FM)
U <sub>c</sub>	DSE MOD 60 60 V/DC	DSE MOD 220 220 V/DC	DSE MOD 242 242 V/DC
I <sub>SCCR</sub>		25 kA DC	
I <sub>imp</sub> 10/350 μs		25 kA	
max.  1)		125 A gG	
max.  2)		250 A gG	
θ°		-40°C ... + 80°C (... +60°C 1)	
φ		5% ... 95%	
I <sub>FE</sub>		<< 10 μA	
IP 3)		20	
L x W x H	90 mm x 36 mm x 73 mm		

max.  DC+/DC-,  /DC-	35 mm <sup>2</sup>	50 mm <sup>2</sup>
max.  DC+/DC-, DC+/DC-,  /DC-	25 mm <sup>2</sup>	35 mm <sup>2</sup>
min.  DC+/DC-, DC+/DC-,  /DC-	10 mm <sup>2</sup>	
	16 mm <sup>2</sup> Cu  ≥ 15.5 mm	



1) Isolierte Systeme

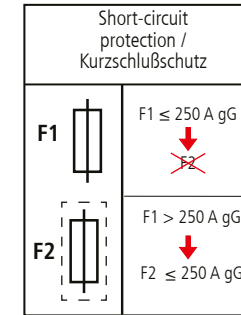
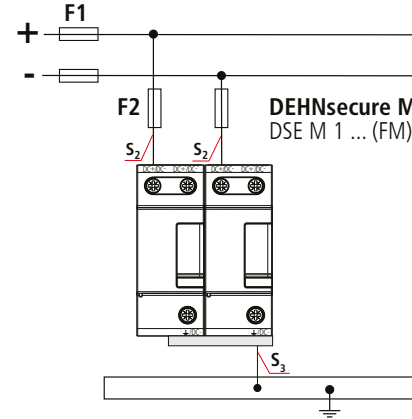


DEHNsecure M, DSE M 1 ... (FM)

	F ≤ 125 A gG	
	F > 125 A gG	

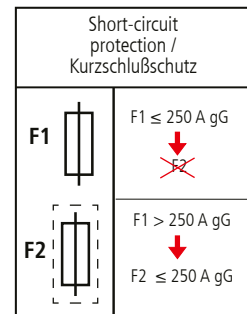
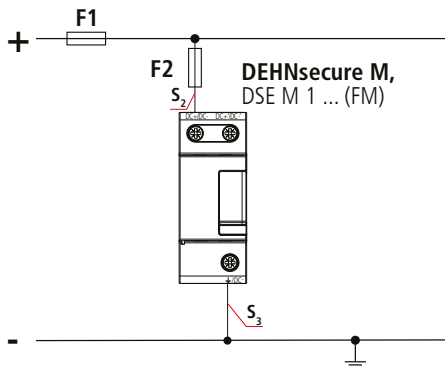
A gG	S <sub>2</sub> / mm <sup>2</sup>	S <sub>3</sub> / mm <sup>2</sup>
25	10	16
35	10	16
40	10	16
50	10	16
63	10	16
80	16	16
100	25	25
125	35	35

2) Isolierte Systeme

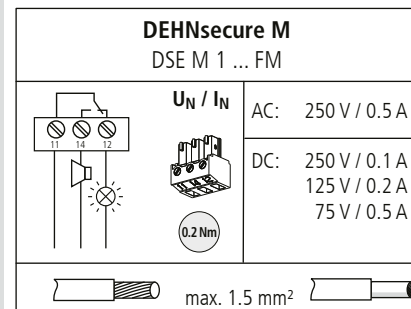


F1 / F2	S <sub>2</sub> / mm <sup>2</sup>	S <sub>3</sub> / mm <sup>2</sup>
...80 A	10	16
100...125 A	16	16
160 A	25	25
200...250 A	35	35

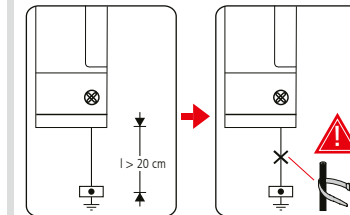
2) Geerdete Systeme



F1 / F2	S <sub>2</sub> / mm <sup>2</sup>	S <sub>3</sub> / mm <sup>2</sup>
...80 A	10	16
100...125 A	16	16
160 A	25	25
200...250 A	35	35



UN / I <sub>N</sub>	AC:
	250 V / 0.5 A
	DC: 250 V / 0.1 A
	125 V / 0.2 A
	75 V / 0.5 A



DSE M 1 242 (FM) kann unter Verwendung einer max. Vorsicherung von 10 A gG an einer maximalen AC-Dauerspannung von 253 Volt betrieben werden!

DSE M 1 242 (FM) can be operated on a maximum continuous operating a.c. voltage of 253 V if a max. backup fuse of 10 A gG is used!

