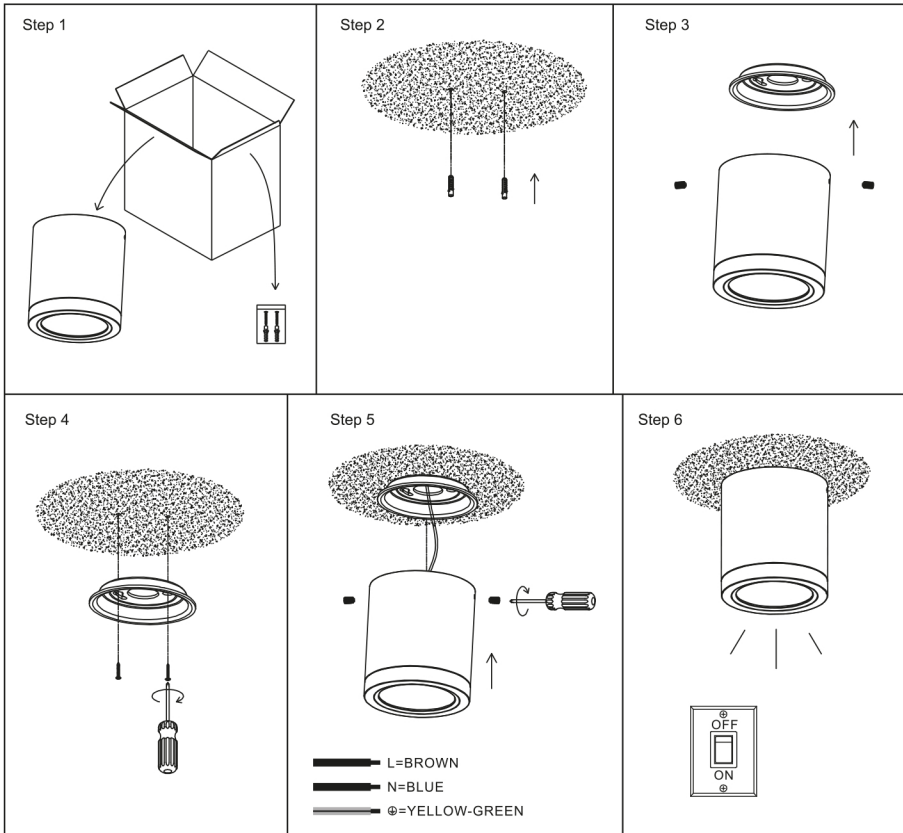


# Surface Mounted LED Downlight Installation Instruction

## Product introduction .....

Surface mounted ceiling light adopts high lumen COB LED. IP54 waterproof structural design, it is an ideal replacement for damp locations. Widely used in general lighting applications such as office, supermarket, shop, school, hotel, etc stairway, lobby, reception, corridors etc.

## Installation steps .....



- Step 1: Take out the fixtures and fittings from the package box.  
 Step 2: Take out the anchor nuts from the accessory bag, and then screw it in the ceiling (Concrete ceiling only).  
 Step 3: Open the screw, loosen mounting bracket.  
 Step 4: Fix the mounting bracket on the ceiling with screw.  
 Step 5: Open the junction box, connect correctly "L" "N" "G", then mount the lamp to the bracket.  
 Step 6: Ensure the lighting installation correct, put on the power supply, then the light can be lighted.  
 Note: applicable for concrete ceiling or wooden ceiling installation only.

## Technical parameters .....

| Dimension  | Power | CCT         | PF  | Protection grade | Voltage               | Dimming | Lifespan |
|------------|-------|-------------|-----|------------------|-----------------------|---------|----------|
| Ø90*100mm  | 15W   | 3000K/4000K | 0.9 | IP54             | AC100-240V<br>50/60Hz | NO      | 40000h   |
| Ø120*110mm | 25W   | 3000K/4000K | 0.9 | IP54             | AC100-240V<br>50/60Hz | NO      | 40000h   |

## ⚠ Warning .....

1. Before using this product, please pay attention to high security, make sure the wires are cut off.
2. The power can be on only when all complete installation is ready and ensure all wires correct.
3. Maintenance must be done by professional and technical personnel, non professional personnel do not disassembly the lamp.

3 years warranty from the purchasing date on the premise of using strictly as instruction