

THIS COPY IS PROVIDED ON A RESTRICTED BASIS AND IS NOT TO BE USED IN ANY WAY DETRIMENTAL TO THE INTERESTS OF PANDUIT CORP.

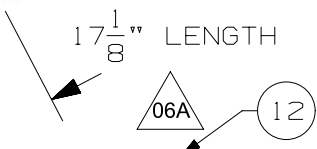
- NOTES:  
 1. VISIT OUR ON-LINE CATALOG AT WWW.PANDUIT.COM FOR A LIST OF CURRENT PARTS APPLICABLE FOR USE WITH THIS PRODUCT.  
 2. ALL MATERIALS AND COMPONENTS USED MEET THE MATERIAL RESTRICTIONS OF RoHS (EUROPEAN DIRECTIVE 2011/65/EU ON THE RESTRICTION OF HAZARDOUS SUBSTANCES) AS PROPOSED BY THE RoHS TECHNICAL ADAPTATION COMMITTEE.



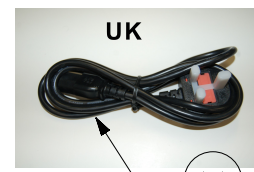
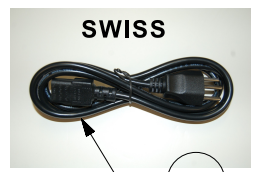
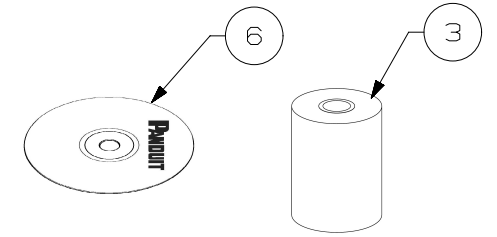
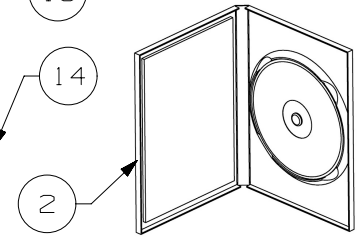
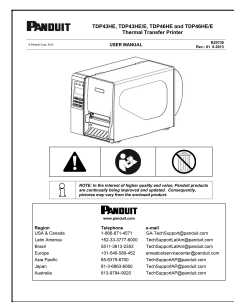
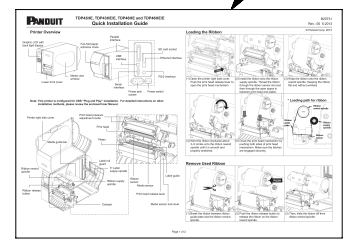
06A

06A

ITEM NO.	NAME	DESCRIPTION (INCLUDES ACCESSORIES)	QTY.
1	PRINTER	TDP43HE/E (300 dpi) or TDP46HE/E (600 dpi)	1
2	EASY-MARK PLUS CD	CD WITH EASY-MARK PLUS LABELING SOFTWARE	1
3	INK RIBBON	RMEH4BL HYBRID INK RIBBON (BLACK)	1
4	COMMUNICATION CABLE	USB CABLE	1
5	USER MANUAL	PRINTER USER MANUAL AND QUICK START GUIDE	1
6	EASY-MARK PLUS CD	CD WITH EASY-MARK PLUS LABELING SOFTWARE	1
7	POWER SUPPLY	24 VOLT POWER SUPPLY	1
8	POWER CORD	NORTH AMERICAN POWER CORD	1
9	POWER CORD	2 PRONG - SCHUKO	1
10	POWER CORD	3 PRONG - SWISS	1
11	POWER CORD	3 PRONG - UK	1
12	THERMAL TRANSFER LINE CARD	BROCHURE FOR PANDUIT THERMAL TRANSFER LABELS	1
13	PRINTER CARD	PRINTER RIBBON SETTINGS RECOMMENDATIONS SHEET	1
14	USER MANUAL	PRINTER USER MANUAL AND QUICK START GUIDE	1



06A



PART NUMBER	TDP43HE/E, TDP46HE/E
TITLE	TDP43HE/E & TDP46HE/E THERMAL DESKTOP PRINTER CUSTOMER DRAWING

ITEM REVISION NAME	121106BD/06									
DATASET FILE NAME	121106BD_DC-06A C11748 TDP4_HE/E r06A CUST DWG									
MATERIAL	N/A	DRAWING NUMBER	C11748							
DRAWN BY	RVU	DATE	4/21/2021	CHK	JADE	SCALE	NONE	SHEET 1 OF 1	SIZE	A

REV	DATE	BY	CHK	APR	DESCRIPTION	ECN
06A	4/21/2022	RVU	ANRO	MSAD	REPLACED FROM IDLC08--SA-ENG TO THERMAL TRANSFER LINE CARD. SEE ITEM NO. 12, VIEW IMAGE. UPDATED ALL NAME BOM. DRAWING TABLE COLUMN HEADING PART NUMBER REPLACED WITH NAME HEADING. ADDED NOTE 2 FOR RoHS.	GAECN06172
00	4/21/2021	RVU	RCMC	JADE	INITIAL RELEASE	GAECN05918

A-SIZE CUSTOMER