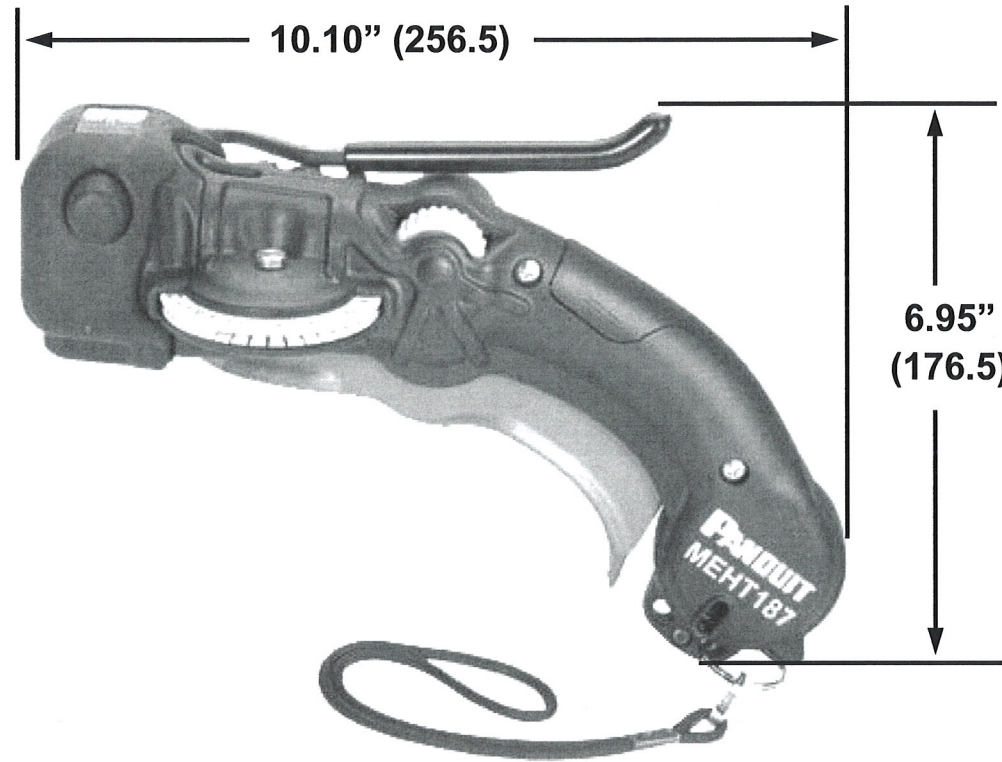
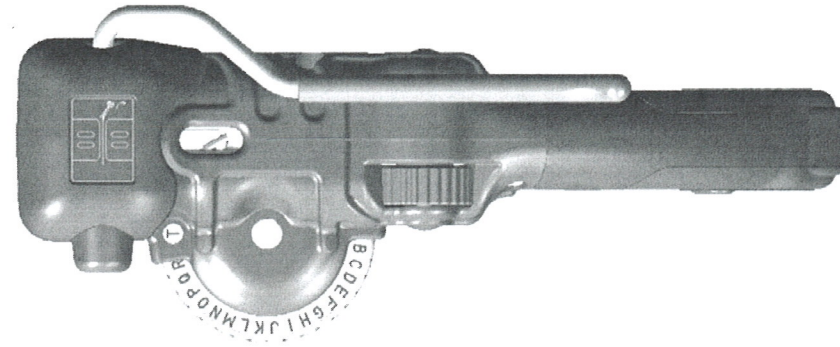


THIS COPY IS PROVIDED ON A RESTRICTED BASIS AND IS NOT TO BE USED IN ANY WAY DETRIMENTAL TO THE INTERESTS OF PANDUIT CORP.



ACCESSORY TAPE PRODUCTS (SOLD SEPARATELY)	
PART NO.	DESCRIPTION
META-X	1/2 in. X 16 ft. (12.7mm X 4.88m) aluminum tape
METS3-X	1/2 in. X 21 ft. (12.7mm X 6.4m) 316 grade stainless steel tape
METS4-X	1/2 in. X 21 ft. (12.7mm X 6.4m) 304 grade stainless steel tape

NOTES, UNLESS OTHERWISE SPECIFIED:

Panduit Tool Number MEHT187 is used to create tags using 1/2" wide metal tape.

This tool's features include:

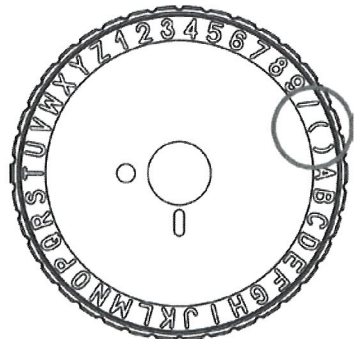
- 3/16" high character embossing wheel
- In-line multifunction cutting die that creates tag complete in single actuation
- Self-adjusting drive roller
- Preview window for centering text
- Preview window for embossed letters
- Preview window for remaining tape amount
- Manual tape advance/reverse wheel with release lever

TOOL WEIGHT: 26.5 oz. (750 gr.)

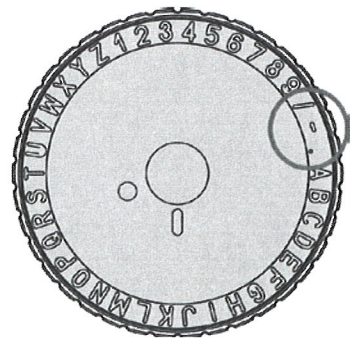
DIMENSIONS SHOWN IN PARENTHESES ARE MILLIMETERS.

REPLACEMENT PARTS: SEE GRAPHIC SHOWN

F:\wrkgpr\rvusers\ENGR DOCS\CUSTOMER DRAWINGS\TM26399B01_01 MEHT187 CD.doc



WHITE WHEEL
TM26319B01



GRAY WHEEL
TM26971B01

REPLACEMENT PARTS

REV	DATE	BY	CHK'D	DESCRIPTION	ECN	- R	CUST	SUP
01	1-15-13	BLR	JEH	ADD REPLC. PARTS	4366		ABJ	
00	12-14-10	BLR	JEH	RELEASED	4366	---	ABJ	

PANDUIT CORP. TINLEY PARK, ILLINOIS

**MEHT187
CUSTOMER DRAWING**

UNLESS OTHERWISE SPECIFIED,
DIMENSIONAL TOLERANCES ARE:
(.x) ± --- (.xxx) ± ---
(.xx) ± --- ANGLES ± ---

UNLESS OTHERWISE SPECIFIED, ALL DIMENSIONS
ARE GIVEN IN INCHES, THIRD
ANGLE PROJECTION.

DRAWN BY:

BLR

DATE:
12-14-10

CHK'D:
JEH

MATL:

SEE
NOTES

SCALE

NONE

DRAWING NO.

TM26399B01

DWG
B
SIZE