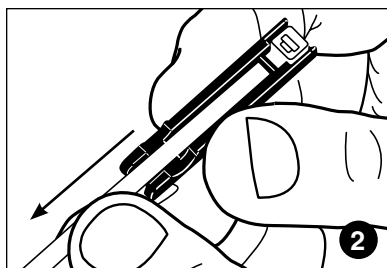


For Mounting 固定



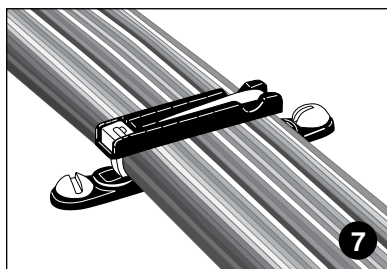
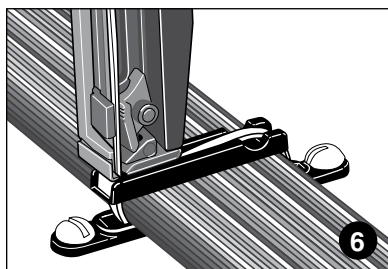
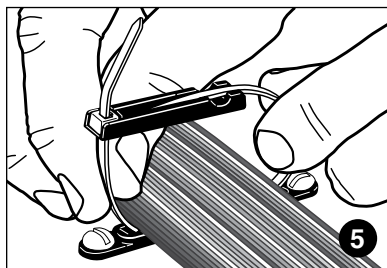
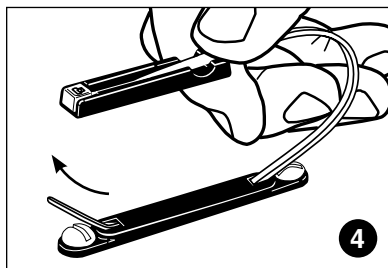
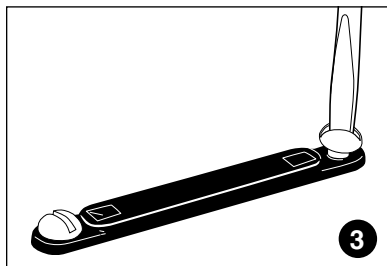
Mount FCBI-S10 base using #10 screws or FCBI-A base using adhesive. No adhesive should enter the cable tie slot.

FCBI-S10はM5のネジで固定。

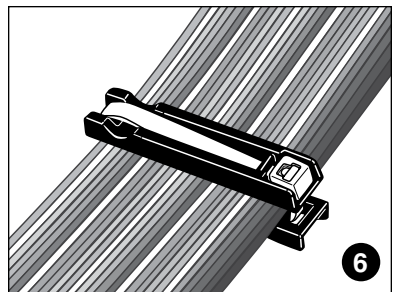
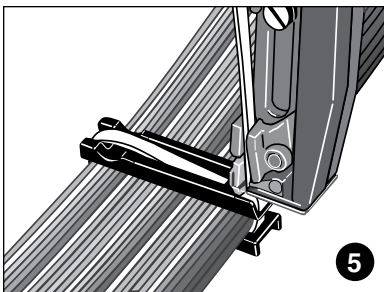
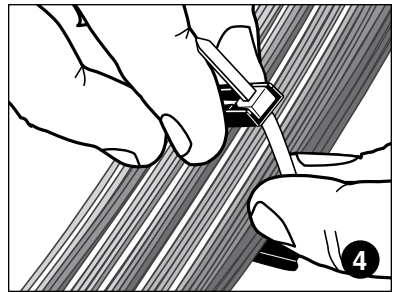
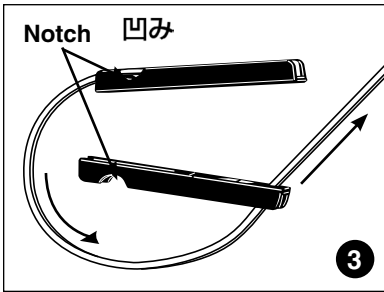
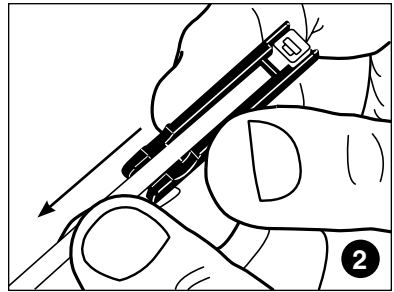
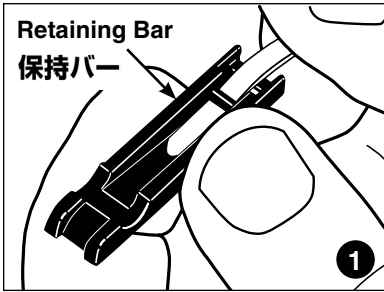
FCBI-Aは接着剤で固定、

接着剤が結束バンドの

スロットに入らないようにすること。



For Bundling 束線



For instructions in Local Languages
and Technical Support:

www.panduit.com/resources/install_maintain.asp

PANDUIT

www.panduit.com

E-mail:
techsupport@panduit.com

Phone:
866-405-6654