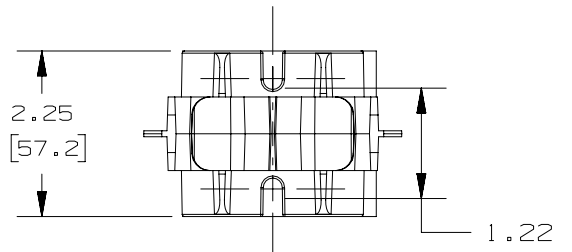
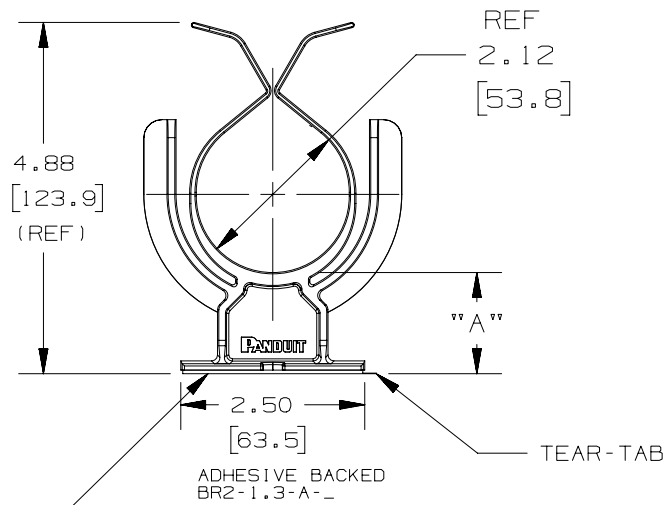


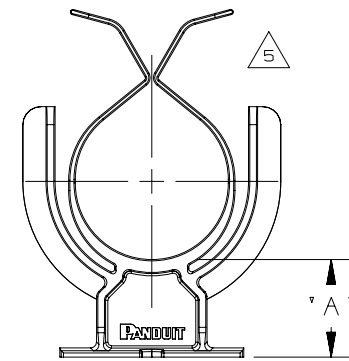
THIS COPY IS PROVIDED ON A RESTRICTED BASIS AND IS NOT TO BE USED IN ANY WAY DETRIMENTAL TO THE INTERESTS OF PANDUIT CORP.



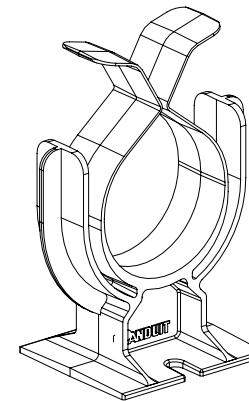
PRODUCT ACCEPTS 1/4" OR M6 MOUNTING SCREWS.



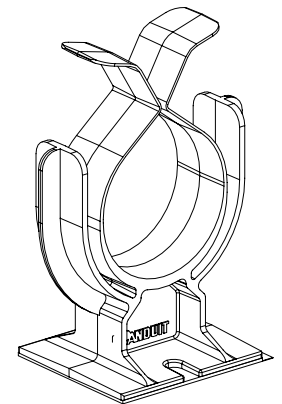
ADHESIVE BACKING: RUBBER BASED ADHESIVE PRESSURE SENSITIVE FOAM TAPE 0.04 [1.0] THICK WITH A PROTECTIVE LINER. MOUNT IS DESIGNED TO SUPPORT 2.0 lbs. [907g] MAX. WEIGHT ON A CLEAN DRY SMOOTH SURFACE.



SCREW APPLIED BR2-1.3--



SCREW APPLIED BR2-1.3--



ADHESIVE BACKED BR2-1.3-A--

PANDUIT PART NUMBER	"A" IN. / [mm]	WEIGHT lbs. / 10 pcs [g] / 10 pcs	MAXIMUM CABLE DIA. IN. [mm]	RECM'D FASTNER
BR2-1.3-A--	1.35 [34.3]	1.36 [617]	2.00 [50.8]	1/4" OR 6mm
BR2-1.3--	1.32 [33.5]	1.34 [607]		

NO WARRANTY, EXPRESSED OR IMPLIED, IS MADE BY PANDUIT WITH RESPECT TO ADHESIVE BOND PERFORMANCE. AMONG OTHER THINGS, THE CONDITIONS UNDER WHICH THESE MOUNTS MAY BE APPLIED AND/OR THE SURFACE TO WHICH THEY MAY BE APPLIED ARE BEYOND PANDUIT'S CONTROL.

REV	DATE	BY	CHK	APR	DESCRIPTION	ECN
5	3/24/17	RVU	DJW	JHAC	UPDATE FORMAT DRAWING. REBUILD MODEL.	GAECN05057
4	7/21/03	JAD			REVISED MATERIAL.	GB2140BB

TITLE 2 IN. BUNDLE RETAINER [BR2-1.3--] CUSTOMER DRAWING	
ITEM REVISION NAME G03597EF/01	PANDUIT
DATASET FILE NAME G03597EF_DC_GB2140BB_05/01B	
UNLESS OTHERWISE SPECIFIED, DIMENSIONAL TOLERANCES ARE: IN [mm]	
.x ± .05 [1.3]	.xxx ± .010 [0.25]
.xx ± .02 [0.5]	ANGLES ± 5 °
THIRD ANGLE PROJECTION	
DRAWN BY JAD	DATE 12/4/98
CHK JHAC	SCALE NONE
DRAWING NUMBER: SHT 1 OF 1	
SIZE A	