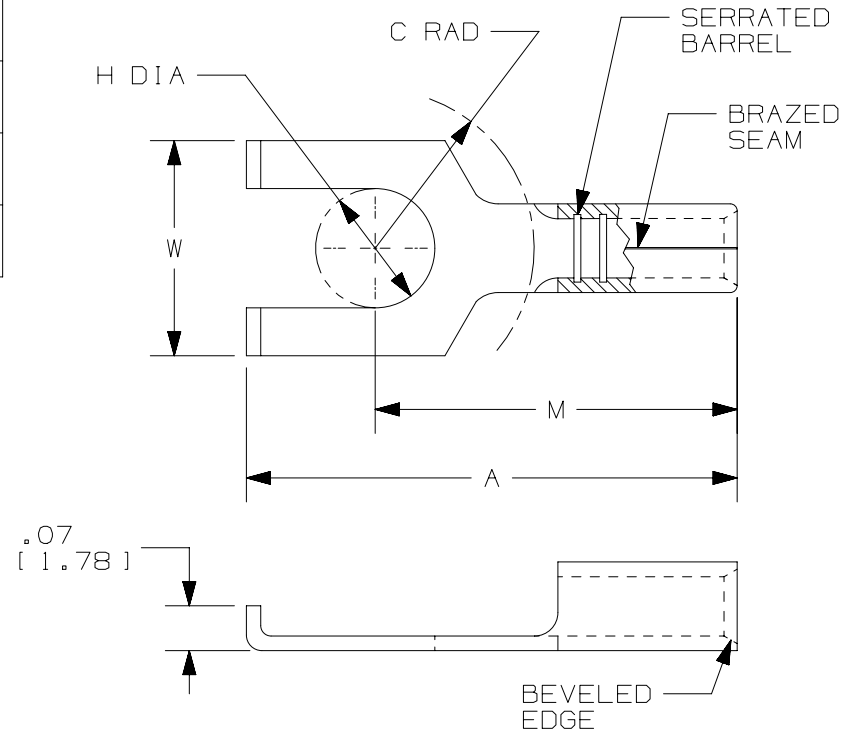


THIS COPY IS PROVIDED ON A RESTRICTED BASIS AND IS NOT TO BE USED IN ANY WAY DETRIMENTAL TO THE INTERESTS OF PANDUIT CORP.

| PANDUIT PART NUMBER | STUD SIZE | DIMENSIONS in. | | | | |
|---------------------|-----------|----------------|---------------|---------------|----------------|----------------|
| | | A ±.020 | W ±.010 | C ±.015 | M ±.020 | H ±.005 |
| P14-6FF | #6 | .65 (16.51) | .28 (7.11) | .22 (5.59) | .49 (12.45) | .160 (4.06) |
| P14-8FF | #8 | .72 (18.29) | .31 (7.87) | .25 (6.35) | .53 (13.46) | .173 (4.39) |

NOTES:

- UL LISTED AND CSA CERTIFIED FOR:
A. #16-14 AWG SOLID OR STRANDED COPPER WIRE
B. 302° F (150° c) MAX. TEMP. RATING
- MATERIAL:
A. STAMPING - .03" (.76) THK COPPER, TIN PLATED
- PACKAGE QTY: STD. PKG. 100
BULK PKG. 1000
- DIMENSIONS IN BRACKETS ARE IN MILLIMETERS
- INSTALLATION TOOLS: CT-100, CT-160, CT-200
- WIRE STRIP LENGTH: 9/32" (7.1)



LISTED
587H
E52164



CERTIFIED
LR31212

| REV | DATE | BY | CHK | APR | DESCRIPTION | ECN |
|-----|----------|------|------|------|--|--------|
| 7 | 12.2.21 | JHNU | JHNU | JADE | REVISED NOTE 1B. 302°F (150°C) WAS 347°F (175°C) | 114228 |
| 6 | 05.11.12 | BDK | LSM | LSM | ADDED NOTE 6 | A41237 |
| 5 | 11/01 | SAB | | | THE TOLERERANCE FOR DIMENSION H WAS +/--.01 | |
| 4 | 10/01 | SAB | SKB | LA | DIMENSION H FOR P14-6FF WAS .15, (3.81) | 09712 |
| 3 | 1/10 | RM | SKB | JAC | FILESPEC WAS A41237A::1:L1 | 08937 |
| 2 | 7-88 | DW | | | REDRAWN WITH REVISIONS | |

| | | | | | |
|--|------|-----|------------------------------|------------|--|
| TITLE #16-14 BARREL NON-INSULATED FLANGED FORK CUSTOMER DRAWING | | | | | |
| ITEM REVISION NAME N41237BA/07 | | | PANDUIT TM | | |
| DATASET FILE NAME N41237BA_DC_P14-FF/07 | | | | | |
| UNLESS OTHERWISE SPECIFIED, DIMENSIONAL TOLERANCES ARE: IN [mm] | | | MATERIAL: SEE NOTES | | |
| DRAWING NUMBER: A41237 | | | DRAWING NUMBER: A41237 | | |
| DRAWN BY DAW | DATE | CHK | SCALE N.T.S. | SHT 1 OF 1 | |
| | | | | SIZE A | |

D10100DA/12