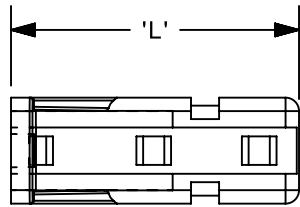


THIS COPY IS PROVIDED ON A RESTRICTED BASIS AND IS NOT TO BE USED IN ANY WAY DETRIMENTAL TO THE INTERESTS OF PANDUIT CORP.

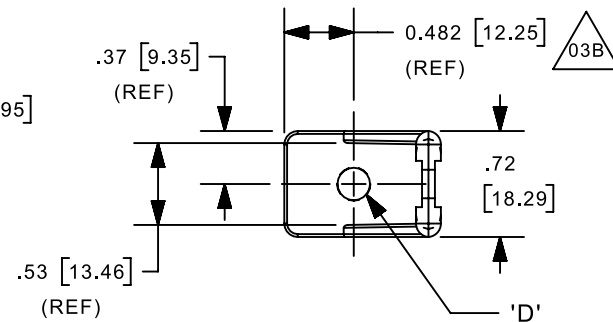
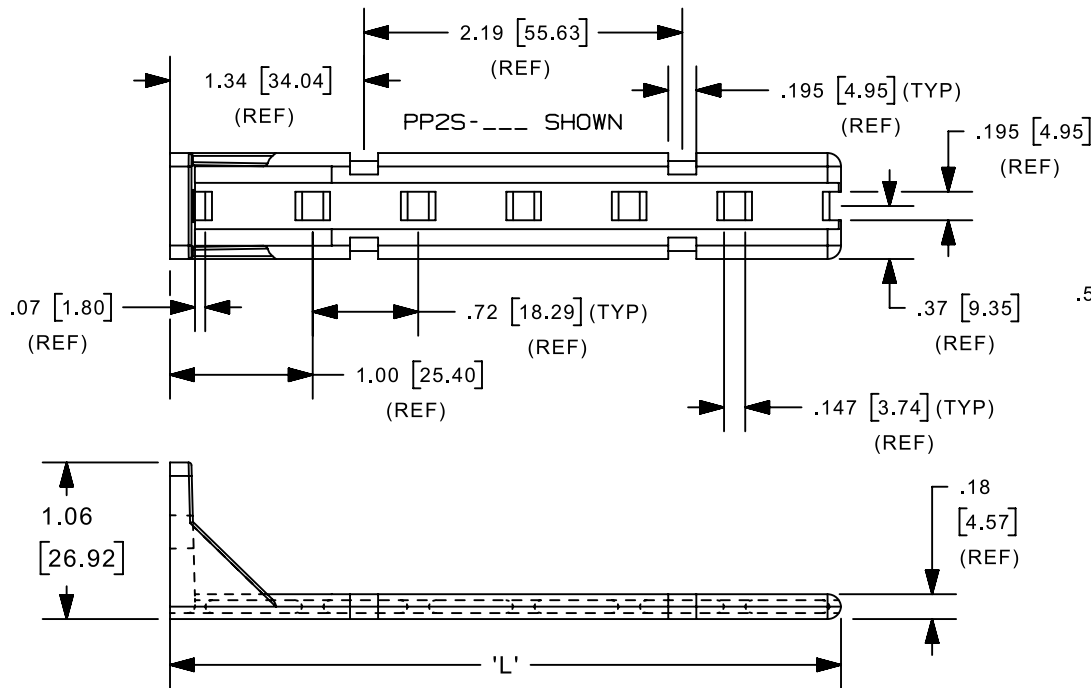


PP1S-___ SHOWN

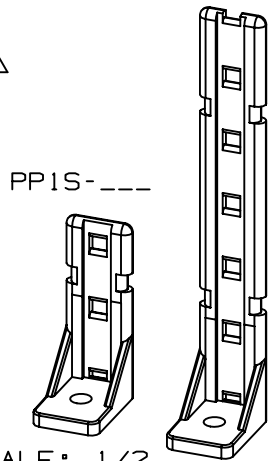
PANDUIT PART NO.	RECM'D FAST.	USE WITH THESE CABLE TIE CROSS-SECTIONS	'D' SCREW HOLE DIA.	'L' LENGTH +/-0.05 [1.3]	WEIGHT lbs / 100 (g) / pcs.
PP1S-S10	#10 (M5) SCREW	M, I, S	0.200 +/-0.005 [5.1 +/-0.1]	1.97 [50.04]	1.2 [552]
PP1S-S12	#12 (M5) SCREW		0.230 +/-0.005 [5.7 +/-0.1]		
PP2S-S10	#10 (M5) SCREW		0.200 +/-0.005 [5.1 +/-0.1]	4.60 [116.84]	2.3 [1043]
PP2S-S12	#12 (M5) SCREW		0.230 +/-0.005 [5.7 +/-0.1]		

NOTES:

- SEE CURRENT PRICE SHEET FOR PART NUMBER SUFFIX DESIGNATION FOR PACKAGE SIZE.
- CABLE TIE CROSS SECTION CODE: M-MINATURE, I-INTERMEDIATE, S-STANDARD



PP2S-___



SCALE: 1/2

TITLE		PAN - POST (PP_S-S__)		
		CUSTOMER DRAWING		
ITEM REVISION NAME		G03597IQ/03		
DATASET FILE NAME		G03597IQ_DC_03B GB0239EA CUST DWG		
UNLESS OTHERWISE SPECIFIED, DIMENSIONAL TOLERANCES ARE: IN [mm]		PANDUIT		
.x ± 0.05 [1.3] .xxx ± 0.010 [0.25] .xx ± 0.02 [0.5] ANGLES ± 5°				
DRAWING NUMBER:		NYLON 6/6		
DRAWING NUMBER:		GB0239EA		
DRAWN BY	DATE	CHK	SCALE	SIZE
JAD	12/18/02	JAD	3/4	A
THIRD ANGLE PROJECTION		SHT 1 OF 1		

REV	DATE	BY	CHK	APR	DESCRIPTION	ECN
03B	9/7/2022	RVU	ANRO	MSAD	ADDED HOLE LOCATION DIM., 0.482 [12.25] (REF).	GAECN06596
03A	12/18/02	JAD			REVISED-ADDED PP1S FROM DWG GB0239BW.	GB0239EA

D10100DA/20