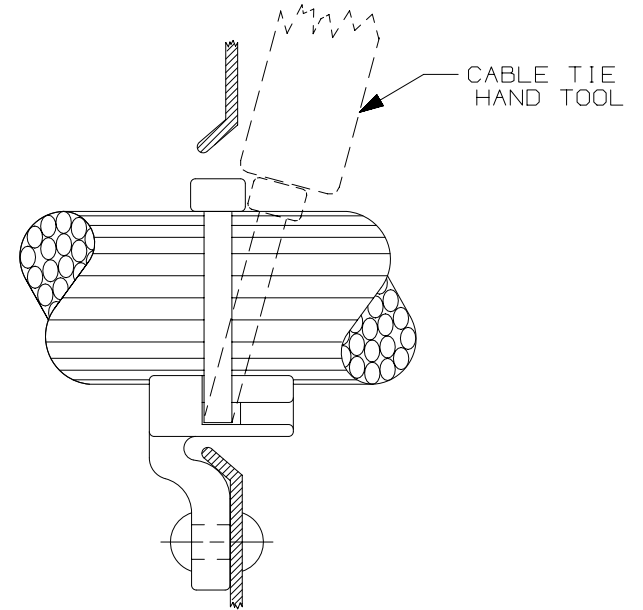
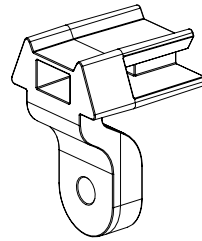
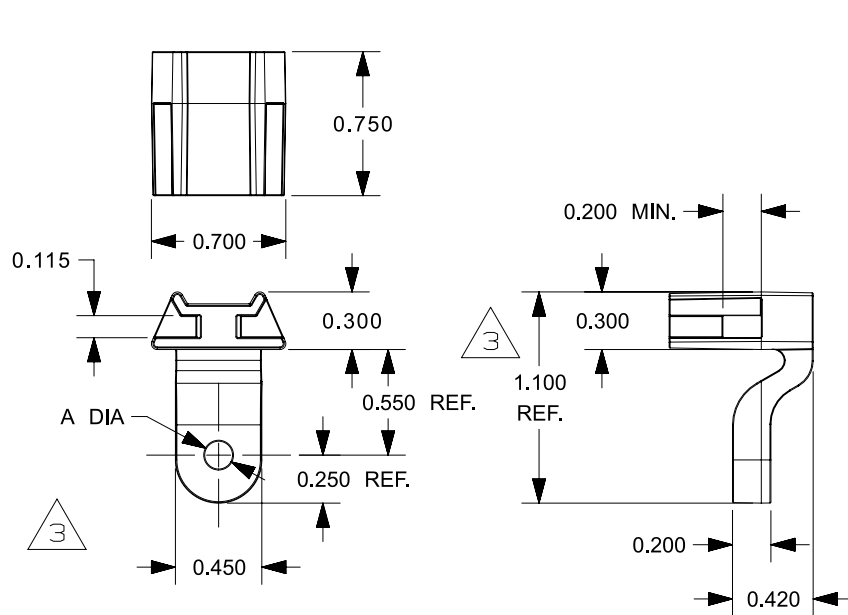


THIS COPY IS PROVIDED ON A RESTRICTED BASIS AND IS NOT TO BE USED IN ANY WAY DETRIMENTAL TO THE INTERESTS OF PANDUIT CORP.

PANDUIT PART NUMBER*	A DIA.	MT'G RIVET	MT'G SCREW	FOR USE WITH THE FOLLOWING PANDUIT CABLE TIES	WEIGHT lbs/100 pcs (g)/100 pcs
LHMS-S5-	0.125 0.135	1/8	#5	M = MINATURE	0.56 (254.24)
LHMS-S6-	0.140 0.150	9/64	#6	I = INTERMEDIATE	0.56 (254.24)
LHMS-S10-	0.190 0.195	3/16	#10	S = STANDARD	0.54 (245.16)

- NOTES:
1. SEE CURRENT PRICE SHEET, SEE [www.panduit.com](http://www.panduit.com) FOR CURRENT PART NUMBER SUFFIX DESIGNATION AND FOR PACKAGE SIZE AND PART COLOR.
  2. CAN SUBSTITUTE #5 SCREW FOR A #6 SELF THREADING SCREW.
  3. CAN SUBSTITUTE #6 SCREW FOR A #8 SELF THREADING SCREW.
  4. BAG MAY CONTAIN EXTRA PIECES TO COMPENSATE FOR VARIANCE IN THE PACKAGING PROCESS. PANDUIT ASSURES MINIMUM PIECE COUNT AS STATED ON THE BAG.



REV	DATE	BY	CHK	APR	DESCRIPTION	ECN
3	1/18/2021	RVU	RMHI	JADE	REBUILD MODEL AND UPDATE DWGS. 1.100 WAS 1.084. ADDED NOTE 4. UPDATE NOTES.	GAECN05683
2	6/26/01	LGG			CHG DIM ON 'A' FOR LHMS-S5 WAS .125/.130. ADD REF & CHG DIM FROM 1.100 TO 1.084.	GB0239BT
1	6/26/01	LGG			UPDATED FOR WEB.	GB0239BT
R	5/03/95	CBJ			INITIAL RELEASE.	GB0239BT

TITLE					
<b>LHMS LIGHTENING HOLE MOUNT</b>					
CUSTOMER DRAWING					
ITEM REVISION NAME					
G03597GG/02					
DATASET FILE NAME					
G03597GG_DC_GB0239BT_03/02C					
UNLESS OTHERWISE SPECIFIED, DIMENSIONAL TOLERANCES ARE: IN [ mm ]					
.x ± .05 [ 1.3 ]		.xxx ± .010 [ 0.25 ]			
.xx ± .02 [ 0.5 ]		ANGLES ± 5 °			
			THIRD ANGLE PROJECTION		
DRAWN BY		DATE		CHK	
CBJ		5/03/95		JHAC	
SCALE		SIZE			
1:1		SHT 1 OF 1			
MATERIAL:					
NYLON 6/6					
DRAWING NUMBER:					
GB0239BT					

D10100DA/20