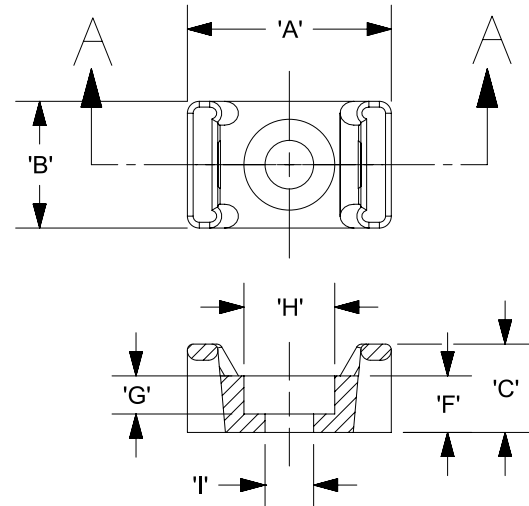
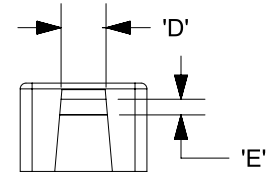


THIS COPY IS PROVIDED ON A RESTRICTED BASIS AND IS NOT TO BE USED IN ANY WAY DETRIMENTAL TO THE INTERESTS OF PANDUIT CORP.

PANDUIT PART NO. *	MATERIAL SUFFIX	RECOMMENDED FASTENER	'A'	'B'	'C'	'D'	'E'	'F'	'G' REF.	'H' REF.	'I' REF.	USE WITH THESE CABLE TIE CROSS SECTIONS	WEIGHT (g) lbs/100 pcs.
TM1S4	NONE -0	#4 (M2.5) SCREW	0.513 [13.0]	0.316 [8.0]	0.230 [5.8]	0.130 +/- .020 [3.3] +/- 0.5	0.067 +/- .020 [1.7] +/- 0.5	0.125 [3.2]	0.075 [1.9]	0.226 [5.7]	0.121 [3.0]	MINIATURE ONLY	0.064 [29.0]
TM1S6	-30 -69	#6 (M3) SCREW							0.080 [2.0]	0.277 [7.0]	0.146 [3.7]		0.057 [26.0]



SECTION A - A



MATERIAL SUFFIX	MATERIAL
NONE	NYLON 6/6
-0	WEATHER RESISTANT NYLON
-30	HEAT STABILIZED NYLON
-69	FLAME RETARDANT NYLON

NOTES;

- \*1. SEE CURRENT PRICE SHEET FOR PART NUMBER SUFFIX DESIGNATION FOR PACKAGE SIZE.
- \*2. HOLE DIMENSIONS SHOULD ACCOMMODATE SPECIFIED RECOMMENDED FASTENER.
- \*3. BAG MAY CONTAIN EXTRA PIECES TO COMPENSATE FOR VARIANCE IN THE PACKAGING PROCESS. PANDUIT ASSURES MINIMUM PIECE COUNT AS STATED ON THE BAG.



REV	DATE	BY	CHK	APR	DESCRIPTION	ECN
9	12/1/2020	RVU	RMHI	JADE	ADDED NOTE 3. UPDATED TEMPLATE DWG.	GAECN05823
8	6/8/05	TMSA			CHANGED RECOMMENDED FASTENER FROM M3.0 TO M2.5.	GB0239CN

TITLE		<b>TM1S TIE MOUNT</b>	
ITEM REVISION NAME		CUSTOMER DRAWING	
DATASET FILE NAME		G03597JV/02	
MATERIAL:		<b>PANDUIT</b>	
UNLESS OTHERWISE SPECIFIED, DIMENSIONAL TOLERANCES ARE: IN [ mm ]		<b>SEE TABLE</b>	
.x ± .05 [ 1.3 ]      .xxx ± .010 [ .25 ]		DRAWING NUMBER:	
.xx ± .02 [ 0.5 ]      ANGLES ± 5 °		GB0239CN	
THIRD ANGLE PROJECTION		SHT 1 OF 1	
DRAWN BY	DATE	CHK	SCALE
GDH	02/20/95	JADE	NONE
SIZE			A

D10100DA/20