

NOTES:

1. MATERIAL:
BODY - ALUMINUM, TIN PLATED
SCREW - ALUMINUM, TIN PLATED
2. UL LISTED & CSA CERTIFIED FOR USE UP TO 600V & TEMPERATURE RATED 90°C (AL9CU)
NOTE: LAM2B350-12-3Y IS cULus
3. DUAL RATED FOR USE WITH COPPER OR ALUMINUM STRANDED CODE CONDUCTOR
4. THESE PARTS ARE RoHS COMPLIANT
5. USE OF OXIDE INHIBITING JOINT COMPOUND LIKE PANDUIT CMP-100 RECOMMENDED FOR PAD TO PAD AND CONDUCTOR SURFACES
6. SEE INSTRUCTION SHEET T-PMPI-223-PC FOR TIGHTENING TORQUE INFORMATION
7. PKG QTY:
3 = 3
8. ** DENOTES NEMA HOLE SPACING

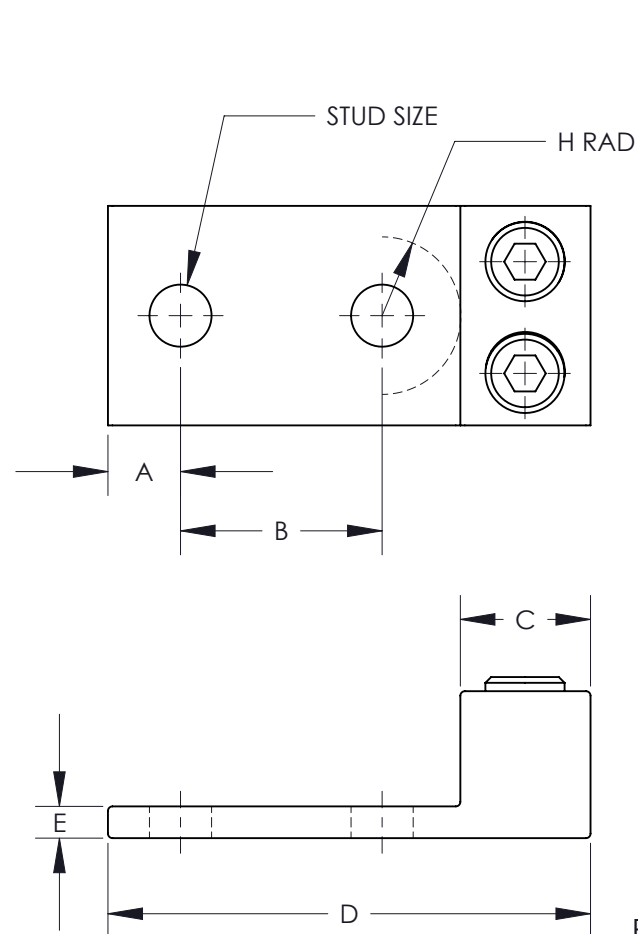


FIGURE 1

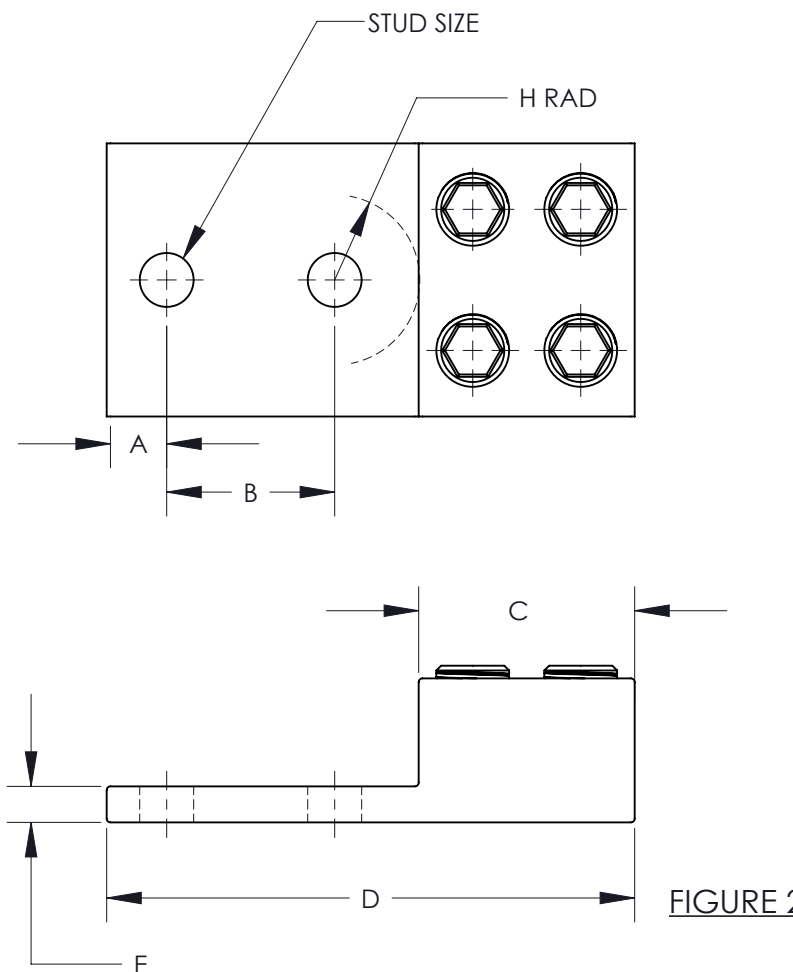


FIGURE 2

PART NUMBER	FIGURE	STUD SIZE	DIMENSIONS - IN [mm] +/- .02 [.5]								WIRE RANGE	HEX KEY*
			A	B	C	D	E	F	G	H		
LAM2B350-12-3Y	1	1/2	0.63 [16.0]	**1.75 [44.5]	1.13 [28.7]	4.19 [106.4]	0.25 [6.4]	1.25 [31.8]	1.94 [49.3]	0.68 [17.3]	350kcmil-6	3/8
LAM2LB600-12-3	2	1/2	0.63 [16.0]	**1.75 [44.5]	2.25 [57.2]	5.50 [139.7]	0.38 [9.7]	1.50 [38.1]	2.85 [72.4]	0.88 [22.4]	600kcmil-2	3/8
LAM2LB1000-12-3	2	1/2	0.63 [16.0]	**1.75 [44.5]	2.75 [69.9]	6.19 [157.2]	.56 [14.2]	1.88 [47.8]	3.48 [88.4]	1.06 [27.0]	1000-500kcmil	1/2

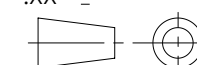
* HEX SIZE MAY DIFFER FROM CHART. DIFFERENCE IN SIZE WILL NOT AFFECT FIT, FORM, OR FUNCTION OF PART



							TITLE LAM2B, LAM2LB SERIES ALUMINUM MECHANICAL LUGS CUSTOMER DRAWING	
							ITEM REVISION NAME	N41558BA/05
							DATASET FILE NAME	C41558 r05.SLDDRW
							UNLESS OTHERWISE SPECIFIED, DIMENSIONAL TOLERANCES ARE: IN [mm] .X ± .XXX ± .XX ± ANGLES ±	
05	8/22	JHNU	JHNU	ALP	D. REVISED NOTE 6 TO REFERENCE INSTRUCTION SHEET T-PMPI-223-PC		125543	
04	2/13	JHNU	JHNU	RGB	REVISED TITLE BLOCK		N41558BA-C41558	
REV	DATE	BY	CHK	APR	DESCRIPTION	ECN		
							DRAWN BY	JHNU
							DATE	2/06
							CHK	JHNU
							SCALE	NONE
							THIRD ANGLE PROJECTION	
							DRAWING NUMBER	C41558
							SHEET 1 OF 1	
							SIZE	B



SEE NOTES



THIRD ANGLE PROJECTION