

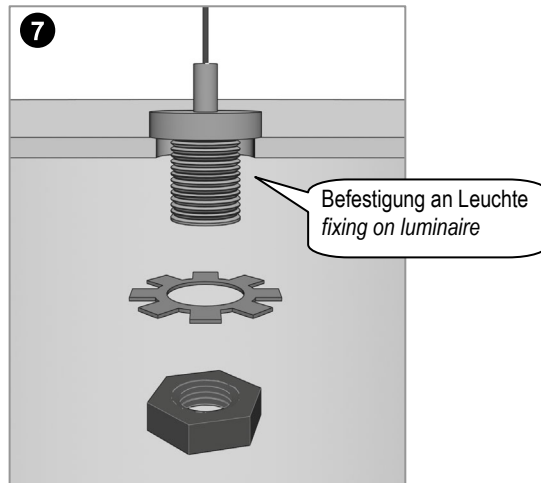
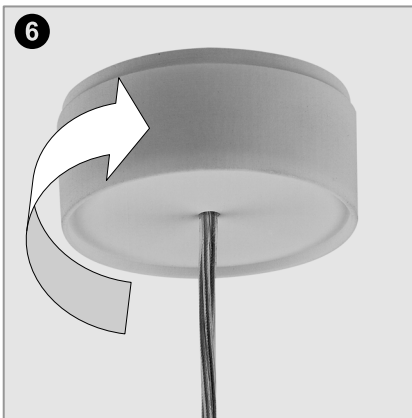
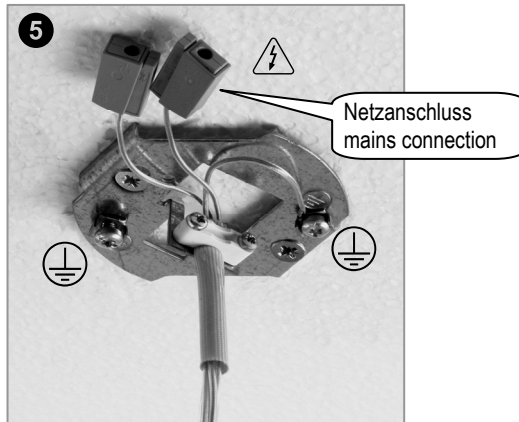
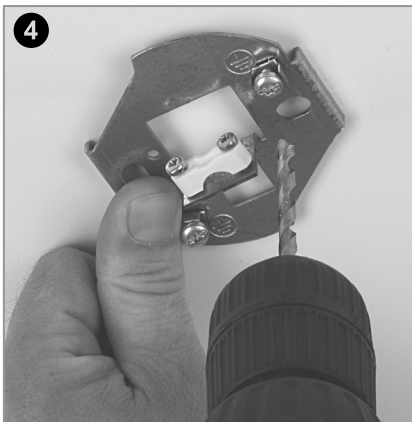
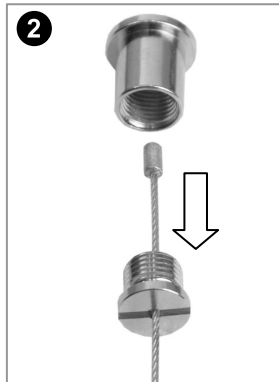


(D)

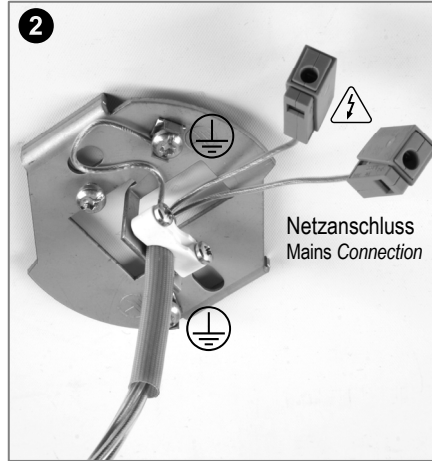
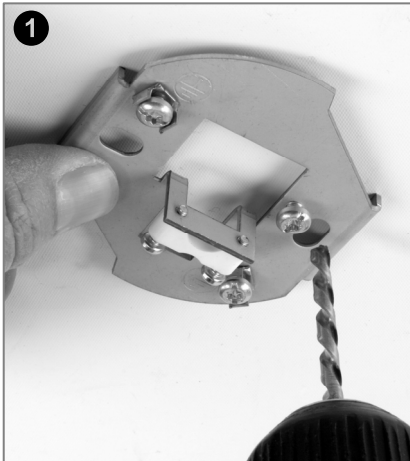
 Netzanschluss muss bauseitig gemäß der geforderten Schutzart und Schutzklasse vorhanden sein. **Netzanschluss darf nur von Elektrofachkräften durchgeführt werden.** Örtliche Vorschriften beachten.

(GB)

 Mains connection must be provided on-site according to the required protection type and class. **Mains Connection must only be done by electricians.** Consider local regulations.



**Kabelabhängung mit Einspeisung / Cable suspension with feeder**  
L 66, L 66 DIM, LK 090.118, SCIS 2.815...



**Drahtseilabhängung mit Einspeisung / Wire-rope suspension with feeder**  
L 67, L 67 DIM, LKM 090.103..., LK 090.103..., LKC 090.103..., LIPA 390.30

