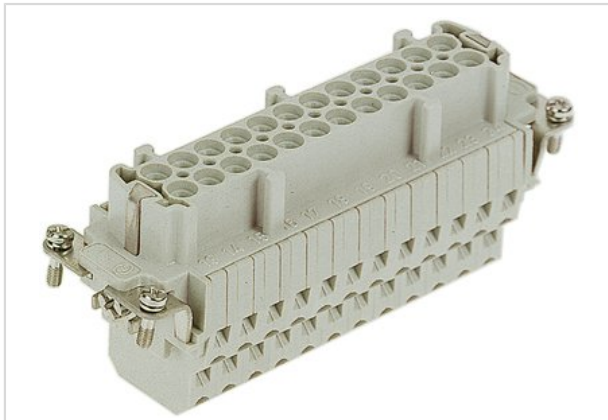


## Han ESS 24 Pos. F Insert Double Cage Cla



|                    |   |
|--------------------|---|
| Part number        | 09 33 024 2772  |
| Specification      | Han ESS 24 Pos. F Insert Double Cage Cla  |
| HARTING eCatalogue | <a href="https://b2b.harting.com/09330242772">https://b2b.harting.com/09330242772</a> |

### Identification

|          |                      |
|----------|----------------------|
| Category | Inserts              |
| Series   | Han <sup>®</sup> ESS |

### Version

|                    |   |
|--------------------|---|
| Termination method | Cage-clamp termination  |
| Gender             | Female  |
| Size               | 24 B  |
| Number of contacts | 24  |
| PE contact         | Yes   |
| Details            | two terminations per contact<br>for hoods/housings high construction only |

### Technical characteristics

|                           |                              |
|---------------------------|------------------------------|
| Conductor cross-section   | 0.14 ... 2.5 mm <sup>2</sup> |
| Conductor cross-section   | AWG 26 ... AWG 14            |
| Rated current             | 16 A                         |
| Rated voltage             | 500 V                        |
| Rated impulse voltage     | 6 kV                         |
| Pollution degree          | 3                            |
| Rated voltage acc. to UL  | 600 V                        |
| Rated voltage acc. to CSA | 600 V                        |
| Insulation resistance     | ≥10 <sup>10</sup> Ω          |
| Contact resistance        | ≤3 mΩ                        |
| Limiting temperature      | -40 ... +125 °C              |
| Stripping length          | 9 ... 11 mm                  |
| Mating cycles             | ≥500                         |



Pushing Performance

## Material properties

|   |  |
|---|--|
| Material (insert)                         | Polycarbonate  |
| Colour (insert)                           | RAL 7032 (pebble grey)                               |
| Material (contacts)                       | Copper alloy   |
| Surface (contacts)                        | Silver plated  |
| Material flammability class acc. to UL 94 | V-0  |
| RoHS                                      | compliant with exemption                             |
| RoHS exemptions                           | 6c: Copper alloy containing up to 4 % lead by weight |
| ELV status                                | compliant with exemption                             |
| China RoHS                                | 50   |
| REACH Annex XVII substances               | No   |
| REACH ANNEX XIV substances                | No   |
| REACH SVHC substances                     | Yes  |
| REACH SVHC substances                     | Lead   |

## Specifications and approvals

|                |  |
|----------------|--|
| Specifications | EN 60664-1<br>IEC 61984                                    |
| Approvals      | DNV GL   |
| UL / CSA       | UL 1977 ECBT2.E235076<br>CSA-C22.2 No. 182.3 ECBT8.E235076 |

## Commercial data

|                                |          |
|--------------------------------|----------|
| Packaging size                 | 1        |
| Net weight                     | 173.04 g |
| Country of origin              | Romania  |
| European customs tariff number | 85366990 |