

CMP-737-D-M1-M2-5 Art. No. 252965



- Metal Ex-d- and Ex-e adaptors
- Large selection of thread types and sizes
- Operating temperature range: -60 °C ... +200 °C
- Worldwide certification, IECEX, ATEX, UL and cCSAus

WebCode **737DB**



The metal Ex-d adaptors and reducers from the 737 series enable adaptation of the thread sizes and types. There is a wide selection of different versions available. They have worldwide certification according to IECEX, ATEX, UL and cCSAus.

Technical Data

Explosion Protection

Application range (zones)	1 2 20 21 22
IECEX gas certificate	IECEX CML 18.0177X
IECEX gas explosion protection	Ex d IIC Gb
IECEX firedamp certificate	IECEX CML 18.0177X
IECEX firedamp protection	Ex db I Mb
IECEX firedamp protection	Ex eb I Mb
ATEX gas certificate	CML 18ATEX1320X
ATEX gas explosion protection	⊕ II 2 G Ex d IIC Gb
ATEX firedamp certificate	CML 18ATEX1320X
ATEX firedamp protection	⊕ I M2 Ex db I Mb
ATEX firedamp protection	⊕ I M2 eb I Mb
CSA gas certificate	CSA 1055233
EAC certificate	TS RU S-GB.AA87.B.00487
EAC gas explosion protection	⊕ 1 Ex d e IIC Gb X
EAC dust explosion protection	⊕ Ex ta IIIC Da X
Note	The product certification and certificates can be downloaded from the manufacturer's homepage (www.cmp-products.com)

Ambient Conditions

Ambient temperature	-60 °C ... +200 °C
---------------------	--------------------

Mechanical Data

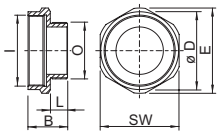
Version	Metric / metric
Degree of protection (IP)	IP66
Degree of protection note	IP67 and IP68 mounting in accordance with the specifications of the manufacturer, CMP

CMP-737-D-M1-M2-5 Art. No. 252965

Mechanical Data

Material	Nickel-plated brass
Silicone-free	Yes
Width across corners	26.4 mm
Width across flats	24 mm
External thread	M16
Thread size	M16
Thread length	15.3 mm
Thread pitch	1,5
Thread pitch 2	1,5
Internal thread	M20
Protrusion length	19.7 mm
Impact strength (IEC 62262)	IK10
Packaging unit	1
Weight	0.05 kg
Weight	0.11 lb

Dimensional Drawings (All Dimensions in mm [inches]) – Subject to Alterations



- O = External thread
- I = Internal thread
- SW = Width across flats
- E = Width across corners
- B = Length
- L = Thread length

We reserve the right to make alterations to the technical data, dimensions, weights, designs and products available without notice. The illustrations cannot be considered binding.