

Lighting

Linear luminaire With LED

GRP

6402/4144-6100-152-1110-11-850S Art. No. 285112



- State-of-the-art LED technology with high luminous efficacy and long service life
- Extremely high luminaire efficacy
- Luminous flux after 100,000 h still 90% of the starting luminous flux
- Optionally with DALI for controlling and monitoring the luminaire
- Optionally with address modules for directly actuation of a common battery system

WebCode 6402C



The linear luminaire with Series 6402/4 LED is ideal for lighting surfaces at a mounting height of up to 10 m. It can also be used to illuminate equipment and objects, both inside and outside. The pole mounting sleeve accessory can be used to easily mount the luminaire on poles. Optionally, the luminaire can be equipped with an address module. It can be used to control and monitor the luminaire for the common battery systems.

Technical Data

Explosion Protection

Ex version	Yes
Application range (zones)	2 21 22
IECEX gas certificate	IECEX IBE 14.0080
IECEX gas explosion protection	Ex ec IIC T4 Gc
IECEX dust certificate	IECEX IBE 14.0080
IECEX dust explosion protection	Ex tb op is / tc IIIC T100 °C Db
ATEX gas certificate	IBEx U 14 ATEX 1292
ATEX gas explosion protection	⊕ II 3 G Ex ec IIC T4 Gc
ATEX dust certificate	IBEx U 14 ATEX 1292
ATEX dust explosion protection	⊕ II 2 D Ex tb op is ... tc IIIC T100 °C Db
Certificates	ATEX (IBE), EAC (ENDCE), IECEX (IBE), India (PESO), Japan (CML)

Electrical Data

Rated operational voltage DC	250 V
Rated operational voltage AC	100 – 240 V
Rated operational voltage DC	110 – 250 V
Frequency range	50 – 60 Hz

Lighting Data

Number of lamps	1
Lamp wattage	42 W
Lamp	LED
Light colour	Neutral white
Light distribution	120°x120°
Luminaire efficacy	138 lm/W
Luminous flux	6460 lm

Lighting

Linear luminaire With LED

GRP

6402/4144-6100-152-1110-11-850S Art. No. 285112



Lighting Data

Colour rendering	≥ 80
Colour temperature	5000 K

Ambient Conditions

Ambient temperature	-40 °C ... +55 °C (T100 °C) Note: Through wiring max. 3x16 A -40 °C ... +60 °C (T100 °C) Note: Through wiring 2 max. 3x10 A
---------------------	--

Mechanical Data

Version	Standard
Degree of protection IP (IEC 60598)	IP66/IP67
Enclosure material	Polyester resin, Glass fibre reinforced
Diffuser	Without diffuser
Sealing material	Silicone
Silicon free	Contains silicone
Material translucent cover	Polycarbonate
Installed terminal strip	PE + N + L1 + L2 + L3
Connection terminals solid max.	6 mm ²
Connection terminals finely-stranded max.	4 mm ²
Type of connection cable	Finely stranded Solid
Design size	4
Width	184 mm
Height	125 mm
Length	1310 mm
Impact strength (IEC 62262)	IK10
Enclosure colour	Light grey (RAL 7035)
Weight	5.55 kg
Weight	12.24 lb
Disconnection of the luminaire	No

Components

Threaded plate	2x plastic
Ballast	VG Luxtronic 40 W 300 mA
Through wiring	With 5 conductors 2.5 mm ²
Drilled holes	3 x M25
Cable entries	2 x M25 Ø 7 – 17 mm
Material cable gland	Polyamide, black
Stopping plug	2 x M25 x 1.5
Stopping plug material	Polyamide, black
Accessories	Provided

Lighting

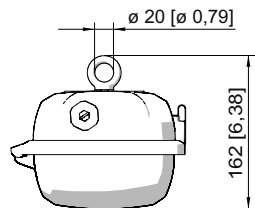
Linear luminaire With LED

GRP

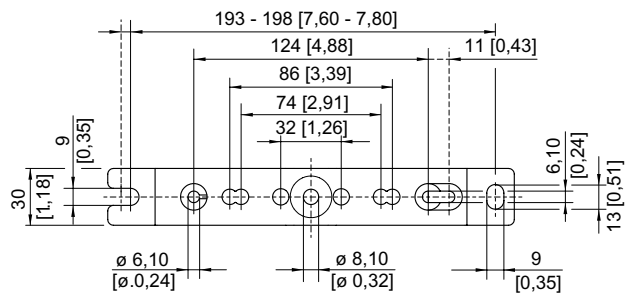
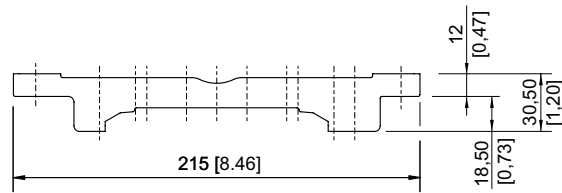
6402/4144-6100-152-1110-11-850S Art. No. 285112



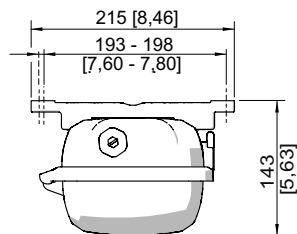
Dimensional Drawings (All Dimensions in mm [inches]) – Subject to Alterations



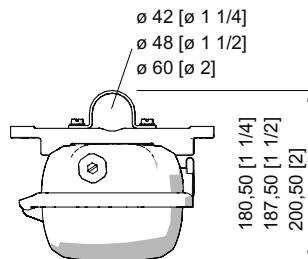
Ring bolt fitted in insert nut of the luminaire



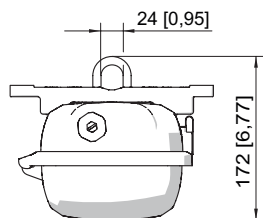
Mounting rail



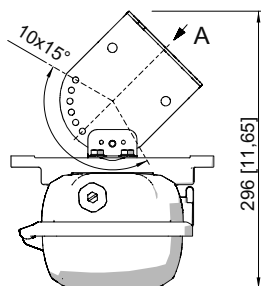
Mounting rail



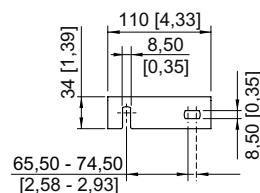
Pipe clamp fitted in mounting rail



Mounting bracket fitted in mounting rail



A



Wall mounting bracket fitted in mounting rail

We reserve the right to make alterations to the technical data, dimensions, weights, designs and products available without notice. The illustrations cannot be considered binding.