

designation	EOLIS sensor RTS
reference	154224A
range	INTEO

FUNCTIONS

The **EOLIS sensor RTS** is a radio sensor for awnings with a protection against wind damage.

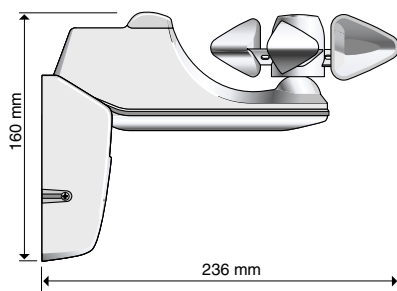
The wind threshold can be set directly on the **EOLIS sensor RTS**.

The **EOLIS sensor RTS** has to be used with the **OREA RTS** and **ALTUS RTS** motors.

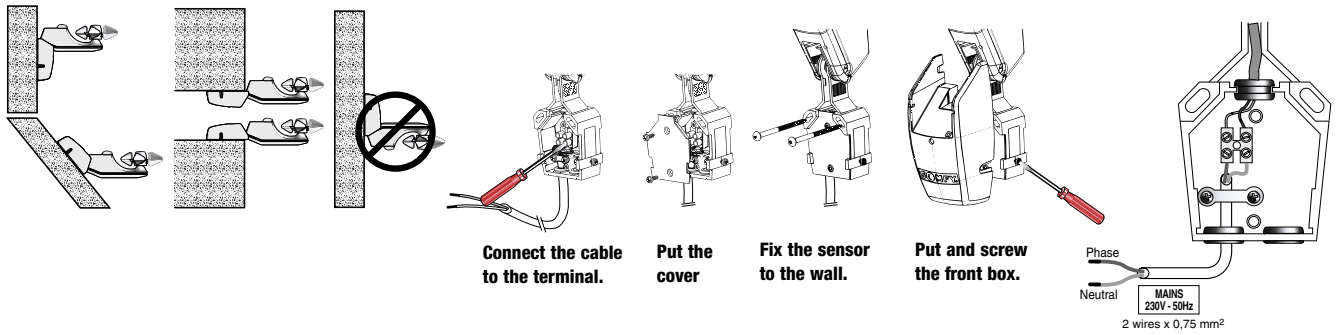


TECHNICAL SPECIFICATIONS

Box	Material	ABS (UV proof)
	Color	grey
	Protection factor	IP 34 Class II product
Power supply	nominal	230 V~
	limits	207-253 V~
	Frequency	50 - 60 Hz
Radio characteristics	Frequency	433,42 MHz \pm 100kHz
	Radiated power	0dBm or 1mW
	Modulation type	ASK type A1
	Range in free field	300 m
Standards	Electrical security	EN60730-1
	Electromagnetic compatibility	EN50081-1 EN50082-1
	Radio	ETS 300 220
Temperature range	Storage	- 30°C to +50°C
	Working	- 20°C to +50°C
Connectors		2 terminals (screws)



MOUNTING / CABLING



COMPATIBILITIES AT THE 26/09/00

Motors with integrated radio receiver :

- OREA RTS
- ALTUS RTS

PROGRAMMING

The motor must be in its learning mode to record an **EOLIS sensor RTS**.

Up to three **EOLIS sensors RTS** can be memorized in a motor and one **EOLIS sensor RTS** can be memorized in several motors.

Record or delete a sensor

Press briefly on the "prog" button of the EOLIS sensor RTS.

The awning moves shortly (DOWN/UP).

If it is a new sensor : it will be recorded in the motor.

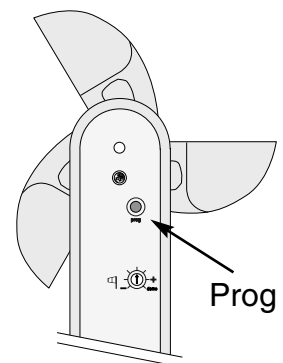
If the sensor was already recorded : it will be erased.

Erase all the sensors and record a new one

Press more than 7 sec. on the "prog" button of the new EOLIS sensor RTS.

The awning moves shortly (DOWN/UP).

the memory of the receiver is cleared (all the previous sensors are erased) and the new sensor is recorded.



FUNCTIONING

The **EOLIS sensor RTS** is able to protect an awning regarding the WIND by controlling the **OREA RTS** or the **ALTUS RTS** motors.

The WIND threshold can be adjusted by a potentiometer accommodate wind speed between 10 to 50 Km/h.

WIND function

- When the wind speed exceeds the threshold set by the EOLIS sensor RTS, an UP order is given to the awning after 2 sec.

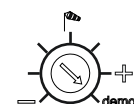
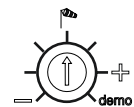
- As long as the measured wind speed is higher than the adjusted threshold, any order is inhibited.

- When the wind speed falls below the threshold setting, an order can be given with a RTS control after 30 seconds.

DEMO mode

In this mode all delay times are reduced to ease installation and the wind threshold is 10Km/h.

The mode is selected by turning the wind potentiometer clockwise to the limit.



Timings

	<u>Normal mode</u>	<u>Demo mode</u>
WIND appearing timing	2 sec.	2 sec.
WIND disappearing timing	30 sec.12 min.	15 sec.