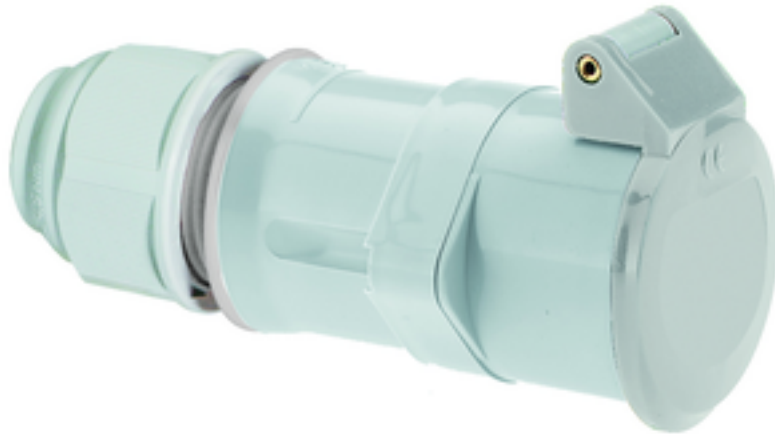


connector low voltage - with cable gland, Multi-Grip



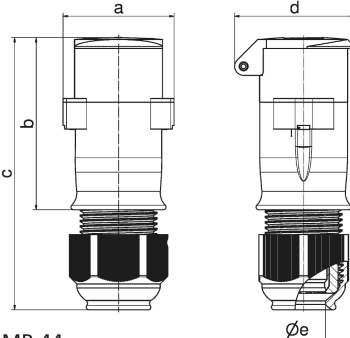
| Product description | |
|---------------------------|---------------|
| BALS-Prd.-Nr | 4529 |
| EAN | 4024941045292 |
| Product category | ELV connector |
| Current | 16A |
| Number of poles | 3p |
| Arrangement of phases | 3P |
| Position of earth contact | 12 h |
| Voltage | 40 up to 50V |
| Frequency | 50/60Hz |

| Product description | |
|------------------------|--|
| Protection degree | IP44 |
| Colour code | grey RAL 7035 |
| Colour of appliance | Hinged lid grey RAL 7035, Collar grey RAL 7035, Housing cover grey RAL 7035, Cable gland grey RAL 7035 |
| Connection design | with screw terminal |
| Maximum conductor size | 10,0 qmm |
| Cable entry | with cable gland |
| Height | 152mm |
| Width | 62mm |
| Depth | 67mm |
| Material of enclosure | Polyamide |
| Contacts | The contact carrier is made of polyamide, the contacts are brass nickel plated |

| Additional technical properties | |
|---------------------------------|--|
| | Multi-Grip cable gland with gasket and integrated strain relief, For cable diameter from 11 up to max. 23,5 mm |

| Logistics data | |
|----------------|------------------|
| Weight/pcs | 0.203 kg / Piece |
| Packaging | Bag |
| Content amount | 1 ST |
| EAN | 4024941045292 |

| Logistics data | |
|----------------|---------------|
| Length | 67 mm |
| Width | 62 mm |
| Height | 152 mm |
| Weight | 0.204 kg |
| Volume | 631.408 ccm |
| Packaging | Carton |
| Content amount | 10 ST |
| EAN | 4024941819695 |
| Length | 275 mm |
| Width | 175 mm |
| Height | 137 mm |
| Weight | 2.155 kg |
| Volume | 5,737.5 ccm |



16 MB 44

| Ampere | 16 | 16 | 32 | 32 | | | |
|----------------------------|-------|-------|-------|-------|--|--|--|
| Polzahl | 2 | 3 | 2 | 3 | | | |
| a | 62,0 | 62,0 | 62,0 | 62,0 | | | |
| b | 96,0 | 96,0 | 96,0 | 96,0 | | | |
| c | 152,0 | 152,0 | 152,0 | 152,0 | | | |
| d | 67,0 | 67,0 | 67,0 | 67,0 | | | |
| e ø | 24,5 | 24,5 | 24,5 | 24,5 | | | |
| Leiter mm ² min | 4 | 4 | 4 | 4 | | | |
| Leiter mm ² max | 10 | 10 | 10 | 10 | | | |
| | | | | | | | |
| | | | | | | | |
| | | | | | | | |
| | | | | | | | |

