

## Control Devices

### LED indicator lamp for front installation

Ex e

8010/6-21-1 Art. No. 240900



- Economical, advantageous LED technology: High luminance, low heat build-up, an extremely long service life and maintenance-free operation
- Easily visible light signals thanks to diffusers lenses in red, yellow, green, blue and white
- For use in temperatures as low as -60 °C

WebCode **8010C**

R. STAHL Series 8010 indicator lamps use a white LED with a diffuser lens, the light on which can be coloured red, yellow, green or blue using calottes. This means that important switching device signals can be easily identified even under poor lighting conditions. The indicator lamps are robust and suitable for use at temperatures as low as -60 °C.

## Technical Data

### Explosion Protection

Scope of validity	ATEX CEC IECEX NEC
Application range (zones)	1 2
IECEX gas certificate	IECEX PTB 17.0022U
IECEX gas explosion protection	Ex db eb IIC Gb
IECEX firedamp certificate	IECEX PTB 17.0022U
IECEX firedamp protection	Ex db eb I Mb
ATEX gas certificate	PTB 17 ATEX 1005 U
ATEX gas explosion protection	⊕ II 2 G Ex db eb IIC Gb
ATEX firedamp certificate	PTB 17 ATEX 1005 U
ATEX firedamp protection	⊕ I M2 Ex db eb I Mb
UL gas certificate	E182378V1S9
Marking cULus	Class I, Div. 2, Groups A,B,C,D; Class I, Zone 1, AEx/Ex db eb IIC
Certificates	ATEX (PTB), Brazil (ULB), Canada / USA (UL), EAC (ENDCE), IECEX (PTB), Korea (KGS)
Notes	Product label may vary. Series devices have certification according to ATEX, IECEX, NEC and CEC.

### Electrical Data

Rated operational voltage AC	12 – 230 V
Rated operational voltage DC	12 – 230 V
Voltage tolerance	1
Frequency	0 ... 60 Hz
Rated operational current	max. 12 mA
Max. Rated operational power	1 W

# Control Devices

## LED indicator lamp for front installation

Ex e

8010/6-21-1 Art. No. 240900



### Electrical Data

Electrical service life	10 <sup>5</sup> lighting hours
-------------------------	--------------------------------

### Lighting Data

Lamp	White LED
------	-----------

### Ambient Conditions

Ambient temperature	-60 °C ... +75 °C
---------------------	-------------------

Ambient temperature	-76 °F ... +167 °F
---------------------	--------------------

Ambient temperature	-60 °C ... +75 °C (T6) -60 °C ... +90 °C (T5)
---------------------	--

Ambient temperature	-76 °F ... +167 °F (T6) -76 °F ... +194 °F (T5)
---------------------	--

Operating temperature	-60 °C ... +85 °C
-----------------------	-------------------

Operating temperature	-76 °F ... +185 °F
-----------------------	--------------------

Operating temperature NEC	-60 °C ... +95 °C
---------------------------	-------------------

Operating temperature NEC	-76 °F ... +203 °F
---------------------------	--------------------

### Mechanical Data

Degree of protection IP (IEC 60529)	IP20
-------------------------------------	------

Enclosure material	Polyamide
--------------------	-----------

Silicone-free	Yes
---------------	-----

Connection cross-section solid	0.32 – 2.5 mm <sup>2</sup>
--------------------------------	----------------------------

Solid connection cross-section AWG	2
------------------------------------	---

Connection cross-section finely stranded	0.32 – 2.5 mm <sup>2</sup>
--	----------------------------

Finely stranded connection cross-section AWG	2
--	---

Connection cross section finely stranded with core end sleeve	0.32 – 2.5 mm <sup>2</sup>
---	----------------------------

Connection cross section finely stranded with core end sleeve AWG	1
---	---

Packaging unit	1
----------------	---

Weight	0.03 kg
--------	---------

Weight	0.066 lb
--------	----------

### Mounting / Installation

Tightening torque	1.2 Nm
-------------------	--------

Tightening torque lbf in	10.62 lbf in
--------------------------	--------------

Connection	Screw terminal
------------	----------------

# Control Devices

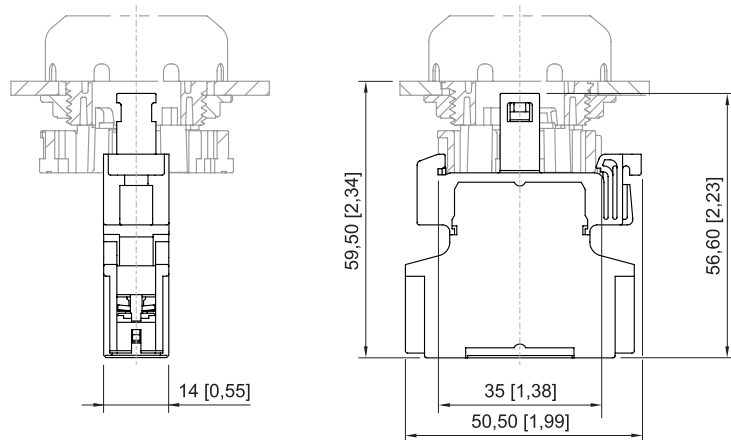
## LED indicator lamp for front installation

Ex e

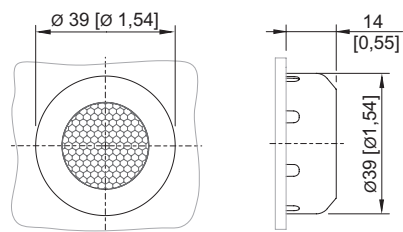
8010/6-21-1 Art. No. 240900



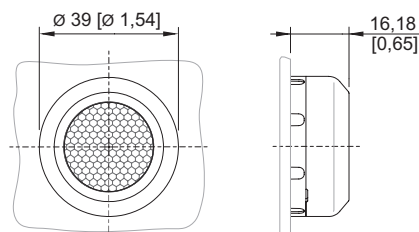
Dimensional Drawings (All Dimensions in mm [inches]) – Subject to Alterations



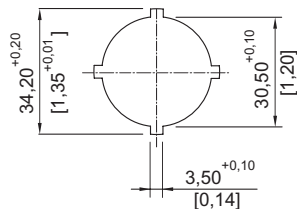
LED indicating lamp



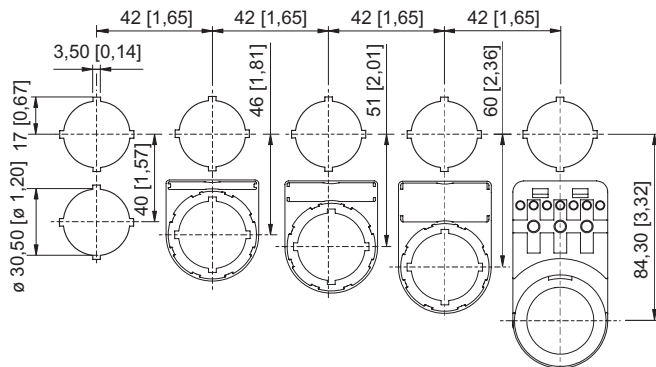
8602/3-735 Illuminated pushbutton  
Actuator with axial actuation



8602/3-054 Indicator lamp bezel  
Actuator without actuation



Cut-out details



Standard cut-out with / without front label

## Accessories

### Indicator lamp bezel BG054



	Art. No.
Diameter 39.0 mm All colours Silicone-free: Yes	223122
Diameter 39.0 mm All colours Silicone-free: No	223123

## Control Devices


LED indicator lamp for front installation

Ex e

8010/6-21-1 Art. No. 240900




### Illuminated pushbutton (spring return)

		Art. No.
	Diameter 39.0 mm All colours Silicone-free: Yes	244654
	Diameter 39.0 mm All colours Silicone-free: No	244655

### Spare Parts

#### Adaptor for front installation

		Art. No.
	8602/3 Front installation for indicator lamp series 8010/6 and contact element series 8082/3	227038

#### Holder for front installation

		Art. No.
	8602/3 holder for cable duct	248673

We reserve the right to make alterations to the technical data, dimensions, weights, designs and products available without notice. The illustrations cannot be considered binding.