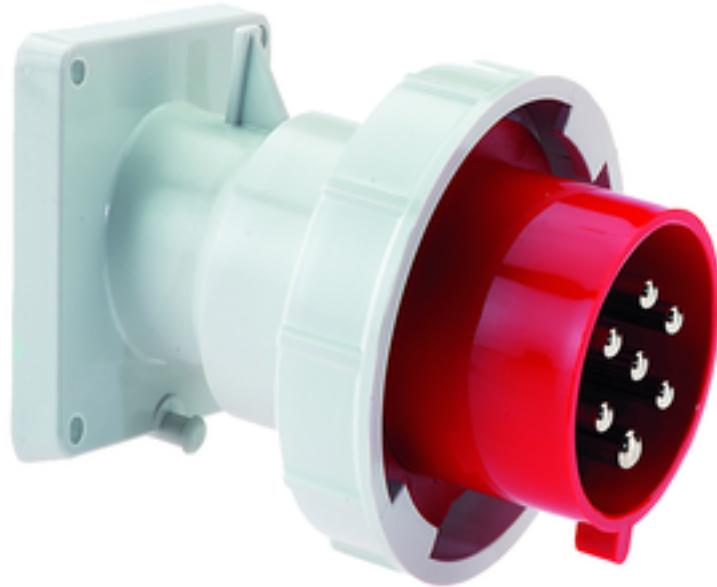


Panel mounting appliance inlet, angled - 7 poles, flange 85x85

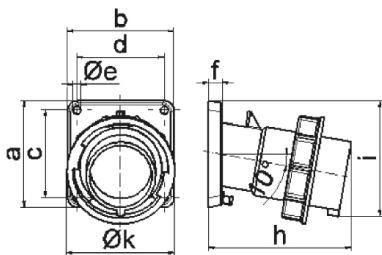


Product description	
BALS-Prd.-Nr	27120
EAN	4024941271202
Product category	TE panel mounting appliance inlet, angled
Current	32A
Number of poles	7p
Arrangement of phases	6p+PE
Position of earth contact	6 h
Voltage	400V~

Product description	
Frequency	50/60Hz
Protection degree	IP67
Colour code	red RAL 3000
Colour of appliance	Bayonet ring grey RAL 7035, Enclosure grey RAL 7035, Collar red RAL 3000
Connection design	with screw terminal
Maximum conductor size	6,0 qmm
Cable entry	other
Height	106mm
Width	107mm
Depth	127mm
Flange size vertical in mm	85mm
Flange size horizontal in mm	85mm
Drill hole dist. vertical mm	70mm
Drill hole dist. horizontal mm	70mm
Material of enclosure	Polyamide
Contacts	The contact carrier is made of high temperature resistant material, the contacts are brass nickel plated

Additional technical properties	
	The inclination is 10°

Logistics data	
Weight/pcs	0.372 kg / Piece
Packaging	Bag
Content amount	1 ST
EAN	4024941271202
Length	127 mm
Width	107 mm
Height	106 mm
Weight	0.373 kg
Volume	1,440.434 ccm
Packaging	Carton
Content amount	10 ST
EAN	4024941823173
Length	325 mm
Width	217 mm
Height	210 mm
Weight	3.926 kg
Volume	13,588.4 ccm



Ampere	16	32				
Polzahl	7	7				
a	85,0	85,0				
b	85,0	85,0				
c	70,0	70,0				
d	70,0	70,0				
e ø	6,3	6,3				
f	11,0	11,0				
h	116,0	127,0				
i	92,0	100,0				
k	86,5	101,5				
Leiter mm ² min	1	2,5				
Leiter mm ² max	2,5	6				

5 MB 183