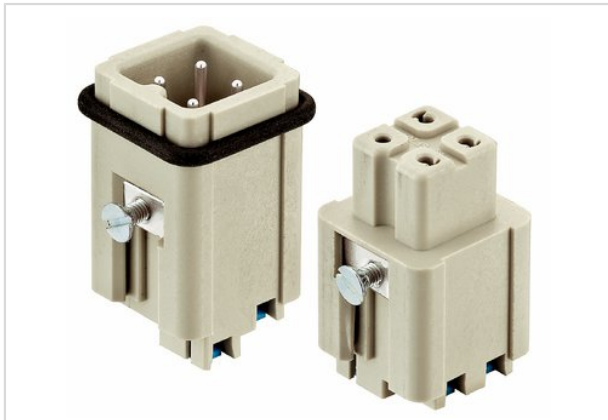


## Han 3A male insert with Quick-Lock



Part number	09 20 003 2633
Specification	Han 3A male insert with Quick-Lock
HARTING eCatalogue	<a href="https://b2b.harting.com/09200032633">https://b2b.harting.com/09200032633</a>

### Identification

Category	Inserts
Series	Han A®

### Version

Termination method	Han-Quick Lock® termination
Gender	Male
Size	3 A
Number of contacts	3
PE contact	Yes
Details	Blue slide

### Technical characteristics

Conductor cross-section	0.5 ... 2.5 mm <sup>2</sup>
Rated current	10 A
Rated voltage conductor-earth	230 V
Rated voltage conductor-conductor	400 V
Rated impulse voltage	4 kV
Pollution degree	3
Rated voltage acc. to UL	600 V
Insulation resistance	≥10 <sup>10</sup> Ω
Limiting temperature	-40 ... +125 °C
Mating cycles	≥500

### Material properties

Material (insert)	Polycarbonate
Colour (insert)	RAL 7032 (pebble grey)
Material (contacts)	Copper alloy
Surface (contacts)	Silver plated



Pushing Performance

## Material properties

Material flammability class acc. to UL 94	V-0
RoHS	compliant with exemption
RoHS exemptions	6c: Copper alloy containing up to 4 % lead by weight
ELV status	compliant with exemption
China RoHS	50
REACH Annex XVII substances	No
REACH ANNEX XIV substances	No
REACH SVHC substances	Yes
REACH SVHC substances	Lead

## Specifications and approvals

Specifications	EN 60664-1 IEC 61984
Approvals	DNV GL
UL / CSA	UL 1977 ECBT2.E235076 CSA-C22.2 No. 182.3 ECBT8.E235076

## Commercial data

Packaging size	10
Net weight	15.26 g
Country of origin	Germany
European customs tariff number	85366990