

CMP-757-D-M2-4 Art. No. 251101



- Ex d und Ex e metal stopping plugs
- Large selection of thread types and sizes
- Operating temperature range: -60 °C ... +200 °C
- Worldwide certification, IECEX, ATEX, UL and cCSAus

WebCode **757DA**



The metal Ex-d stopping plugs from the 757 series with external hexagon and head enable temporary or long-term plugging of unused drilled holes. There is a wide selection of different thread sizes and types available. They have worldwide certification according to IECEX, ATEX, UL and cCSAus.

Technical Data

Explosion Protection

Application range (zones)	1 2 20 21 22
IECEX gas certificate	IECEX CML 18.0177X
IECEX gas explosion protection	Ex db IIC Gb
IECEX firedamp certificate	IECEX CML 18.0177X
IECEX firedamp protection	Ex db I Mb
IECEX firedamp protection	Ex eb I Mb
ATEX gas certificate	CML 18ATEX1320X
ATEX gas explosion protection	⊕ II 2 G Ex db IIC Gb
ATEX firedamp certificate	CML 18ATEX1320X
ATEX firedamp protection	⊕ I M2 Ex db I Mb
ATEX firedamp protection	⊕ I M2 eb I Mb
EAC certificate	TS RU S-GB.AA87.B.00487
EAC gas explosion protection	⊕ 1 Ex d e IIC Gb X
EAC dust explosion protection	⊕ Ex ta IIIC Da X
Note	The product certification and certificates can be downloaded from the manufacturer's homepage (www.cmp-products.com)

Ambient Conditions

Ambient temperature	-60 °C ... +200 °C
---------------------	--------------------

Mechanical Data

Degree of protection (IP)	IP66
Degree of protection note	IP67 and IP68 mounting in accordance with the specifications of the manufacturer, CMP
Material	Stainless steel

Installation Equipment and Accessories

Stopping plug With hex head

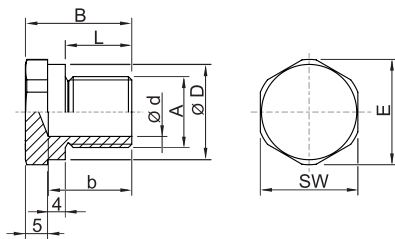


CMP-757-D-M2-4 Art. No. 251101

Mechanical Data

Silicone-free	Yes
Drive	External hexagon
Width across corners	26.4 mm
Width across flats	24 mm
Outer diameter	26.4 mm
Thread size	M20
Thread length	15 mm
Thread pitch	1,5
Impact strength (IEC 62262)	IK10
Packaging unit	1
Weight	0.079 kg
Weight	0.17 lb

Dimensional Drawings (All Dimensions in mm [inches]) – Subject to Alterations



A = Thread size
B = Length
L = Thread length
D = Outer diameter
b = Dimension b
d = Dimension d
E = Width across corners
SW = Width across flats hexagon socket

We reserve the right to make alterations to the technical data, dimensions, weights, designs and products available without notice. The illustrations cannot be considered binding.